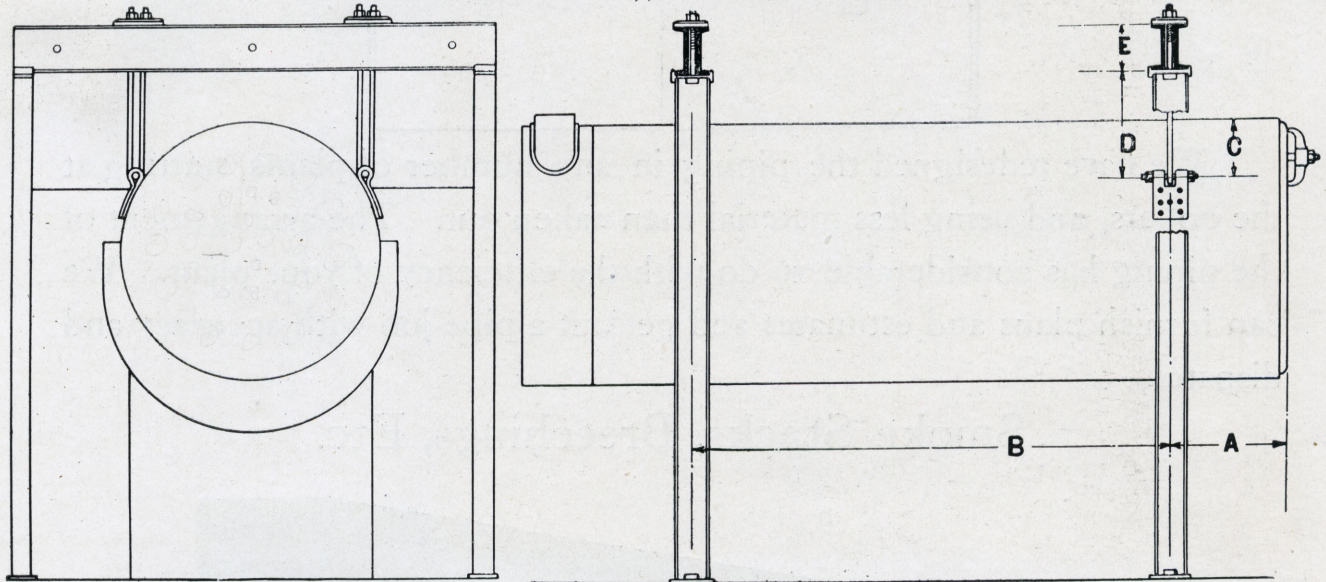


BULLETIN No. 37



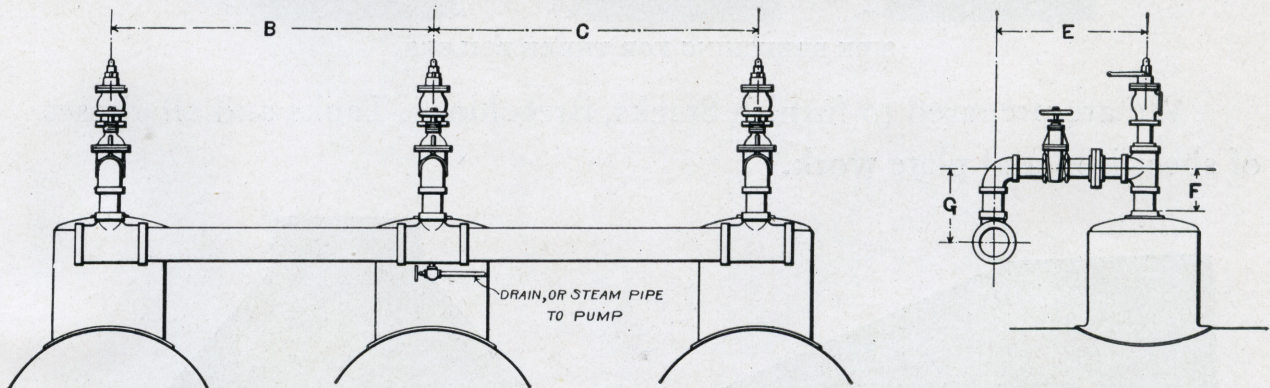
BOILER
FIXTURES

SUSPENSION APPARATUS
HANGER RODS (U BOLTS), CROSS BEAMS AND COLUMNS



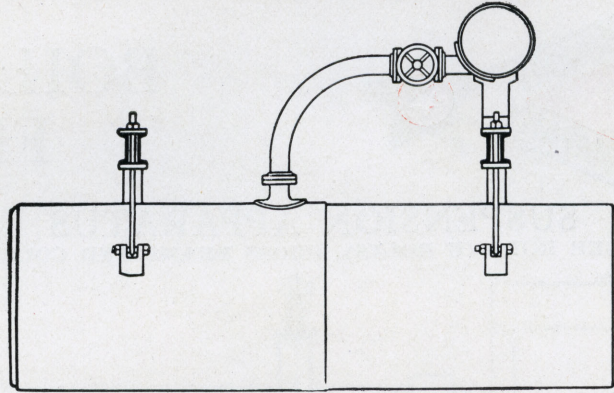
When a boiler is to be suspended, instead of supported by wall brackets resting directly on the walls, our standard arrangement for the larger sizes is as illustrated and consists of four Hartford plate hangers riveted to shell of boiler; four weldless U bolts made from round bar steel, the ends of each U bolt furnished with nuts and passing through the two holes of a heavy washer; these washers resting on top of cross beams, one near end of boiler, each cross beam consisting of two channel beams bolted together back to back with spacers (the U bolts passing up between the two channels); and these cross beams carried by four columns, two at each side of boiler, each column being an I beam and fitted with cast iron base and cap plates. We also make columns of pipe in place of I beams when desired.

PIPES (OR HEADER) TO CONNECT TOGETHER THE STEAM OUTLETS OF TWO OR MORE BOILERS



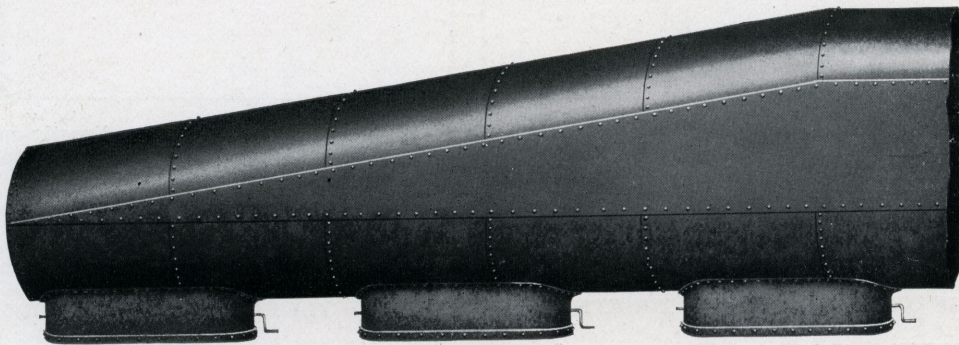
The outlets of boilers should not be rigidly connected, as with the high pressures and temperatures of present day practice it is impossible to maintain tight joints with rigid piping, and in some cases disastrous accidents occur from this cause. The piping arrangement illustrated above as a header, to the ends of which the main steam supply lines to engine, etc., are to be connected; and between each boiler and the header, is a flexibly jointed pipe connection containing a pair of flanges and a gate valve. Either boiler of a battery may be shut off from the header. Perfect drainage is provided. The swinging connections to the boilers prevent strains and leaky joints through expansion from heat or movement from settling of the boilers, also allow the erection of the pipe with ease although cut and threaded before shipment. An arrangement with steam header and pipe connection to same is shown on next page.

Header and Bent Pipe Connections to Boilers



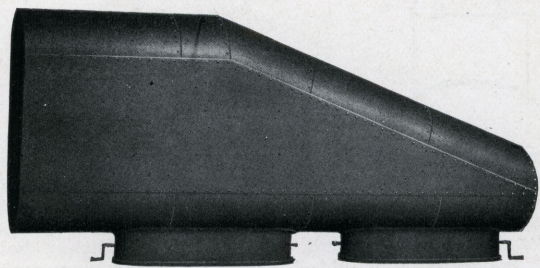
We have redesigned the piping in any number of plants, starting at the boilers, and using less material than taken out. The arrangement of the piping has considerable to do with the efficiency of your plant. We can furnish plans and estimates and get out a pipe job with accuracy and dispatch.

Smoke Stacks, Breechings, Etc.

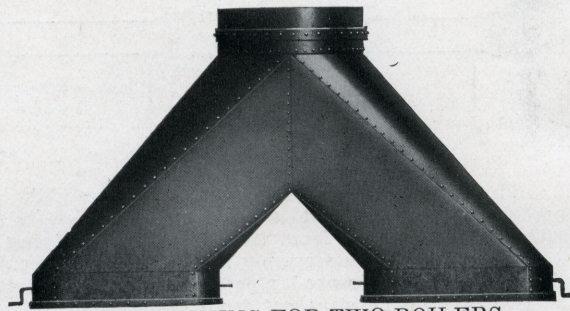


SIDE BREECHING FOR THREE BOILERS.

We are prepared to furnish Stacks, Breechings, Tanks and all classes of sheet iron and plate work.



SIDE BREECHING FOR TWO BOILERS.



Y BREECHING FOR TWO BOILERS.