

H. O. CO. ACREAGE 4428 SUB NO. 2 S. P. Bankston SURVEY Hardin COUNTY, ABSTRACT NO. 3

Acreage found 4428 Patentee _____ Estimated by Dumphy, Otey, Shaw & McDonald Date November 17-18, 1910
 Timber Rights Expire _____ Mineral Rights Expire _____ H. O. Co. Represented by _____
 Encroachments, Conflict, Trespass, Houses, Fences, Fields Houses, Fences and Fields
 Has Land Been Cut Over? Yes When _____ By Kirby Lumber Co. Class of Timber Cut Long Leaf Pine
 Topography Pine Land Rolling, Hardwood Land Low and Flat Soil Sand and Sandy Loam
 Adaptable for Grazing and Agriculture Indications of _____

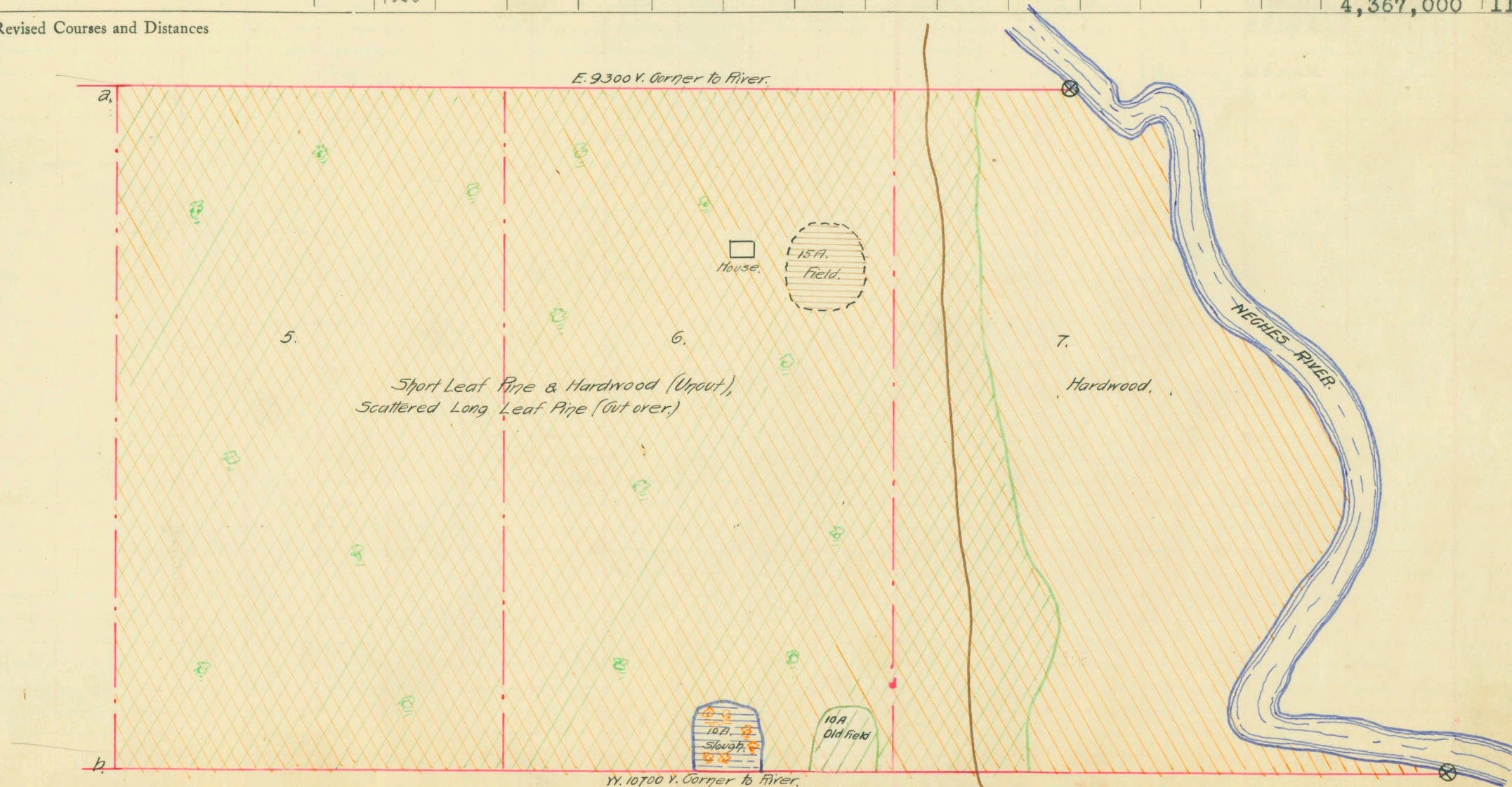
PINE REPRODUCTION					
Area No.	5	5	6	6	7
Acres	640	640	605	605	588
L. L. Seedlings					
S. L. Seedlings					
L. L. 7"	5M		1M		
L. L. 8" to 11"	21M		4M		
S. L. 7"		8M		7M	2M
S. L. 8" to 11"		58M		39M	3M
Total Feet	26M	66M	5M	46M	5M

MERCHANTABLE PINE (M. FEET) HERRING LOG SCALE—OUTSIDE BARK MEASUREMENT								
AREA NO.	ACRES	LONG LEAF		SHORT LEAF		LOGS TO TREE	LOGS TO M.	TOTAL FEET
		12" To 16"	17" & Up	12" To 16"	17" & Up			
5	640	44	110			3	10-12	154,000
5	640			405	899	3	10-12	1,304,000
6	605	14	27			3	10-12	41,000
6	605			306	1253	3	10-12	1,559,000
7	588			21	126	3	10-12	147,000
Total Feet		58	137	732	2278			3,205,000

Growth Fair Quality Sound and smooth, medium length
 Isolated or Grouped Scattered Injury None
 Jeopardized by _____ Preferred Method of Logging Tram and Carts

Method of Logging	AREA NO.	ACRES	TUPELO GUM	HARDWOOD (M. FEET) SCRIBNER-DOYLE LOG SCALE—INSIDE BARK MEASUREMENT														
				RED GUM		CYPRESS		WHITE OAK		RED OAK		HICK-ORY	ASH	BEECH	MAG-NOLIA	TOTAL		
				Ties	Feet	Ties	Feet	Ties	Feet	Ties	Feet					Feet	Ties	
Nearest Stream <u>Neches River</u>	5	640		1500	188			666	151	1400	214				21	5	579,000	3566
	6	605		1088	186	160	32	976	213	1310	240			10	5	686,000	3534	
Reproduction	7	588		1978	1571	640	132	1050	758	1088	636	5				3,102,000	4756	
		1833														4,367,000	11856	

Revised Courses and Distances



See
sheet

ABSTRACT NO. 3

RECORD OF TIMBER CUTTING

DATE	PINE						HARDWOOD												
	LONG LEAF		SHORT LEAF		TIES	PILING	TUPELO GUM	RED GUM		CYPRESS		WHITE OAK		RED OAK		HICKORY	ASH	BEECH	MAGNOLIA
	12" to 16"	17" UP	12" to 16"	17" UP				Ties	Feet	Ties	Feet	Ties	Feet	Ties	Feet				
1916 July Aug Oct.		49061	Camp # 1																
		1208830																	
		509711																	
1917 Apr		41826																	
" May		676099																	
" June		1759278																	
" July		299428																	
" Aug		1668458																	
" Nov.		15192																	
1917 July		116677																	
" Aug		956753																	
1918 Jan		12835																	
" Feb		141951																	
" March		122850																	
" April		227920																	
" May		4143																	
" Oct.		21121																	
" Nov.		57004																	
		9389136																	
1920 Feb		50196																	
" Aug		8222																	
1910 Jan																			
" Feb																			
" Mar																			

Died under heading camp 1.