

H. O. CO. ACREAGE 4428 SUB NO. 1 Henry McGill SURVEY Hardin COUNTY, ABSTRACT NO. 38

Acres found 4428 Patentee _____ Estimated by Otey, Shaw, McDonald & Dumphy Date November 15, 1910
 Timber Rights Expire _____ Mineral Rights Expire _____ H. O. Co. Represented by _____
 Encroachments, Conflict, Trespass, Houses, Fences, Fields Houses, Fences and Fields
 Has Land Been Cut Over? Yes When 8-10 yrs. By Kirby Lumber Co. Class of Timber Cut Long Leaf Pine
 Topography Rolling Soil Sand and Clay, and Alluvial in bottom
 Adaptable for Grazing and Agriculture Indications of _____

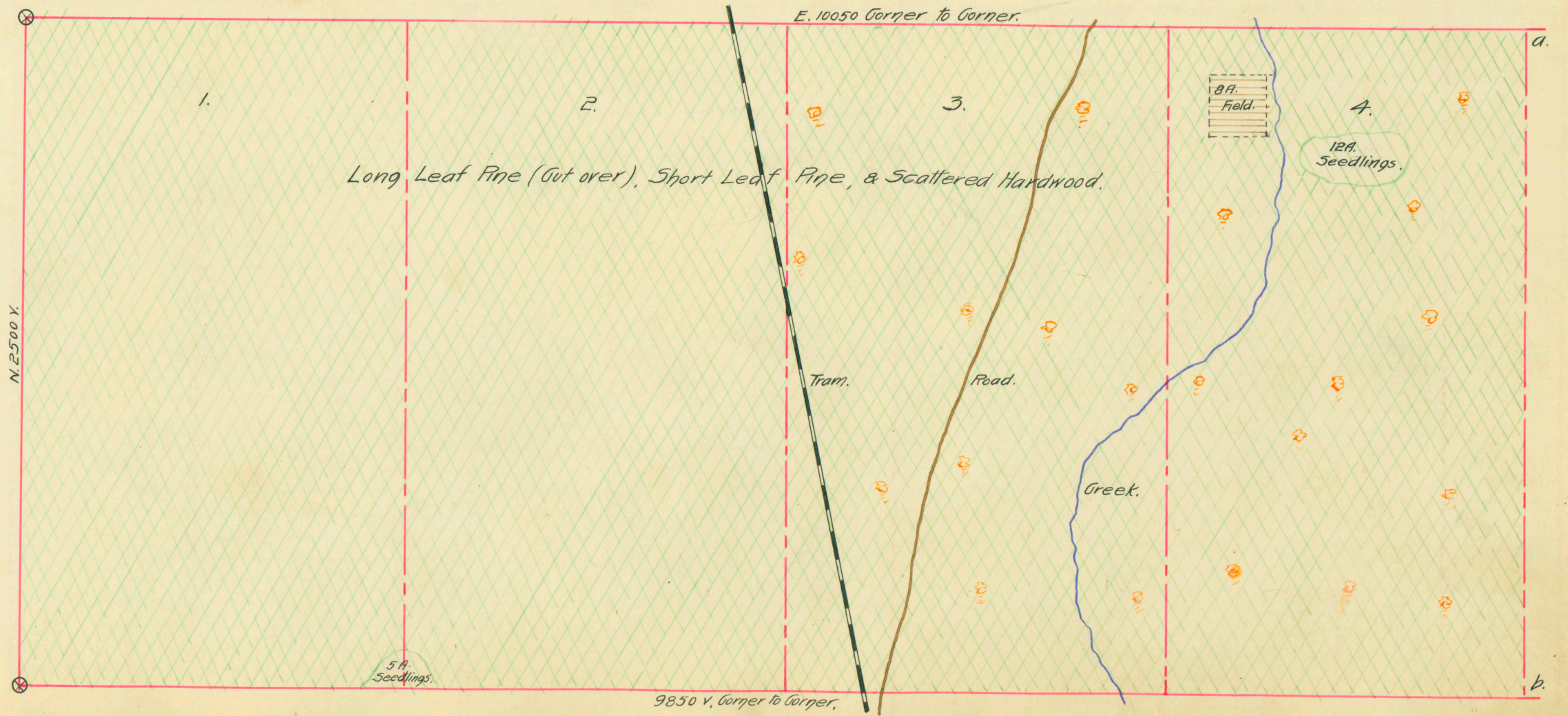
PINE REPRODUCTION				
Area No.	1	2	3	4
Acres	635	640	640	620
L. L. Seedlings	5A			12A
S. L. Seedlings				
L. L. 7"	18M	17M	11M	1M
L. L. 8" to 11"	115M	93M	68M	4M
S. L. 7"			1M	8M
S. L. 8" to 11"	2M	2M	8M	50M
Total Feet	135M	112M	88M	63M

AREA NO.	ACRES	LONG LEAF				SHORT LEAF		LOGS TO TREE	LOGS TO M.	TOTAL FEET
		12" To 16"		17" & UP		12" To 16"	17" & UP			
1	635	445	447	11	50	3	13	953,000		
2	640	414	756	19	79	3	11	1,268,000		
3	640	259	427	57	311	3 1/2	8	1,054,000		
4	620	56	50	359	2070	3 1/2	8	2,535,000		
Total Feet		1174	1680	446	2510			5,810,000		

Growth Vigorous
 Isolated or Grouped Scattered
 Jeopardized by _____
 Quality Long Leaf medium, Short Leaf good
 Injury None
 Preferred Method of Logging Tram

Method of Logging	AREA NO.	ACRES	TUPELO GUM	HARDWOOD (M. FEET) SCRIBNER-DOYLE LOG SCALE—INSIDE BARK MEASUREMENT													
				RED GUM		CYPRESS		WHITE OAK		RED OAK		HICKORY	ASH	BEECH	MAGNOLIA	TOTAL	
				Ties	Feet	Ties	Feet	Ties	Feet	Ties	Feet					Feet	Ties
Nearest Stream	3	640		71	20			86	15	64	3					43,000	221
Reproduction	4	620		1180	219	5	960	231	919	152			47	18	672,000	3,059	
															715,000	3,280	

Revised Courses and Distances



See
mills.

ABSTRACT NO. 38

RECORD OF TIMBER CUTTING

DATE	PINE						HARDWOOD												
	LONG LEAF		SHORT LEAF		TIES	PILING	TUPELO GUM	RED GUM		CYPRESS		WHITE OAK		RED OAK		HICKORY	ASH	BEECH	MAGNOLIA
	12" to 16"	17" UP	12" to 16"	17" UP				Ties	Feet	Ties	Feet	Ties	Feet	Ties	Feet				
1913 Nov		438375	Camp 1																
1916 Aug		698022																	
		628750																	
1917 June		141721																	
" Sept		1848636																	
" Oct		605453																	
" Nov		1120031																	
" Dec		249245																	
" Aug		513463																	
1918 Jan		154722																	
" Feb		1094926																	
" March		1315347																	
" April		532124																	
" May		17713																	
" Sept		247316																	
" Oct		11465																	
1919 March		6908																	
" May		59237																	
1920 Feb		32701																	

Hardwood
1918
Feb. Oak Ties 309