

H. O. CO. ACREAGE 4428 SUB NO. 1 A. W. Smith SURVEY Hardin COUNTY, ABSTRACT NO. 47

Acreage found 4382 - R/W Patentee Estimated by H. H. Shaw and C. N. Otey, Jr. Date Nov. 30, Dec. 1-2, 1910  
 Timber Rights Expire Mineral Rights Expire H. O. Co. Represented by  
 Encroachments, Conflict, Trespass, Houses, Fences, Fields Conflict, House, Fence and Field  
 Has Land Been Cut Over? Partly When By Class of Timber Cut Long and Short Leaf Pine  
 Topography Rolling Soil Sand and Clay and Sandy Loam  
 Adaptable for Agriculture Indications of

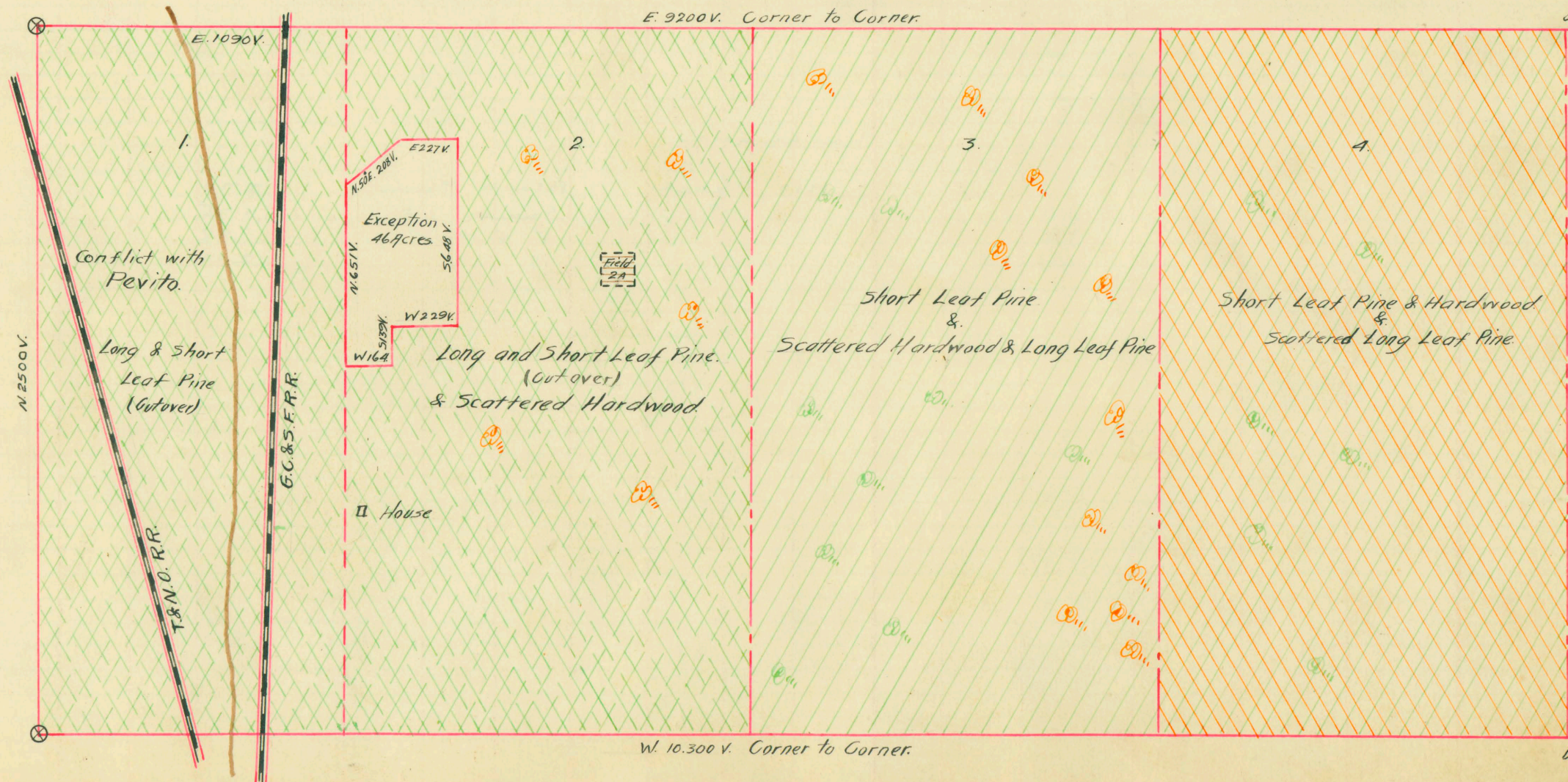
PINE REPRODUCTION				
Area No.	1	2	3	4
Acres	482	592	640	640
L. L. Seedlings				
S. L. Seedlings				
L. L. 7"	12M	5M	2M	1M
L. L. 8" to 11"	75M	32M	10M	5M
S. L. 7"	2M	8M	13M	11M
S. L. 8" to 11"	12M	51M	78M	75M
Total Feet	101M	96M	103M	92M

MERCHANTABLE PINE (M. FEET) HERRING LOG SCALE—OUTSIDE BARK MEASUREMENT								
AREA NO.	ACRES	LONG LEAF		SHORT LEAF		LOGS TO TREE	LOGS TO M.	TOTAL FEET
		12" to 16"	17" & UP	12" to 16"	17" & UP			
1	482	273	393	53	262	2-3	9-11	981,000
2	592	130	294	461	2570	3-4	7-9	3,455,000
3	640	65	354	706	3438	3-4	7-9	4,563,000
4	640	49	147	621	2648	3-4	7-9	3,465,000
Total Feet		517	1188	1841	8918			12,464,000

Growth Vigorous Quality L.L. medium, S.L. good quality and length  
 Isolated or Grouped Scattered Injury None  
 Jeopardized by Preferred Method of Logging Tram

Method of Logging	AREA NO.	ACRES	HARDWOOD (M. FEET) SCRIBNER-DOYLE LOG SCALE—INSIDE BARK MEASUREMENT											TOTAL			
			TUPELO GUM	RED GUM		CYPRESS		WHITE OAK		RED OAK		HICK-ORY	ASH	BEECH	MAG-NOLIA	Feet	Ties
				Ties	Feet	Ties	Feet	Ties	Feet	Ties	Feet						
Nearest Stream	2	592	8	390	104	329	53	501	74	755	95				3	337,000	1,975
	3	640	30	920	146	273	63	472	53	908	94		8	22	416,000	2,573	
Reproduction	4	640	48	515	149	624	156	710	108	720	134		14	39	648,000	2,569	
															1,401,000	7,117	

Revised Courses and Distances Field notes for exception furnished by Mr. McClelland.



See vault.

ABSTRACT NO. 11

# RECORD OF TIMBER CUTTING

DATE	PINE				HARDWOOD														
	LONG LEAF		SHORT LEAF		TIES	PILING	TUPELO GUM	RED GUM		CYPRESS		WHITE OAK		RED OAK		HICK-ORY	ASH	BEECH	MAG-NOLIA
	12" TO 16"	17" UP	12" TO 16"	17" UP				Ties	Feet	Ties	Feet	Ties	Feet	Ties	Feet				
1917		3872	Camp	10															
		12468	"	"															
1919		99092	Camp	10															
Jan		462980	"	"															
Feb		765243	"	"															
March		765679	"	"															
April		594782	"	"															
May		498072	"	"															
June		337815	"	"															
July		472248	"	"															
August		866054	"	"															
Nov			"	"															
Dec	5046094	367757	"	"															

See credit on Sub 10

Hardwood

1919 April

Black gum	270
Sweet "	175
P. Oak	88
	211

Filed under heading camp 10 & Red.