

H. O. CO. ACREAGE 4428 SUB NO. 2 A. W. Smith SURVEY Hardin COUNTY, ABSTRACT NO. 47

Acres found 4382 - R/W Patentee Estimated by H. H. Shaw and C. N. Otey, Jr. Date Nov. 30, Dec. 1-2, 1910
 Timber Rights Expire Mineral Rights Expire H. O. Co. Represented by
 Encroachments, Conflict, Trespass, Houses, Fences, Fields Conflict, House, fence and field
 Has Land Been Cut Over? Partly When By Class of Timber Cut Long and Short Leaf Pine
 Topography Rolling Soil Sand and Clay and Sandy Loam
 Adaptable for Agriculture Indications of

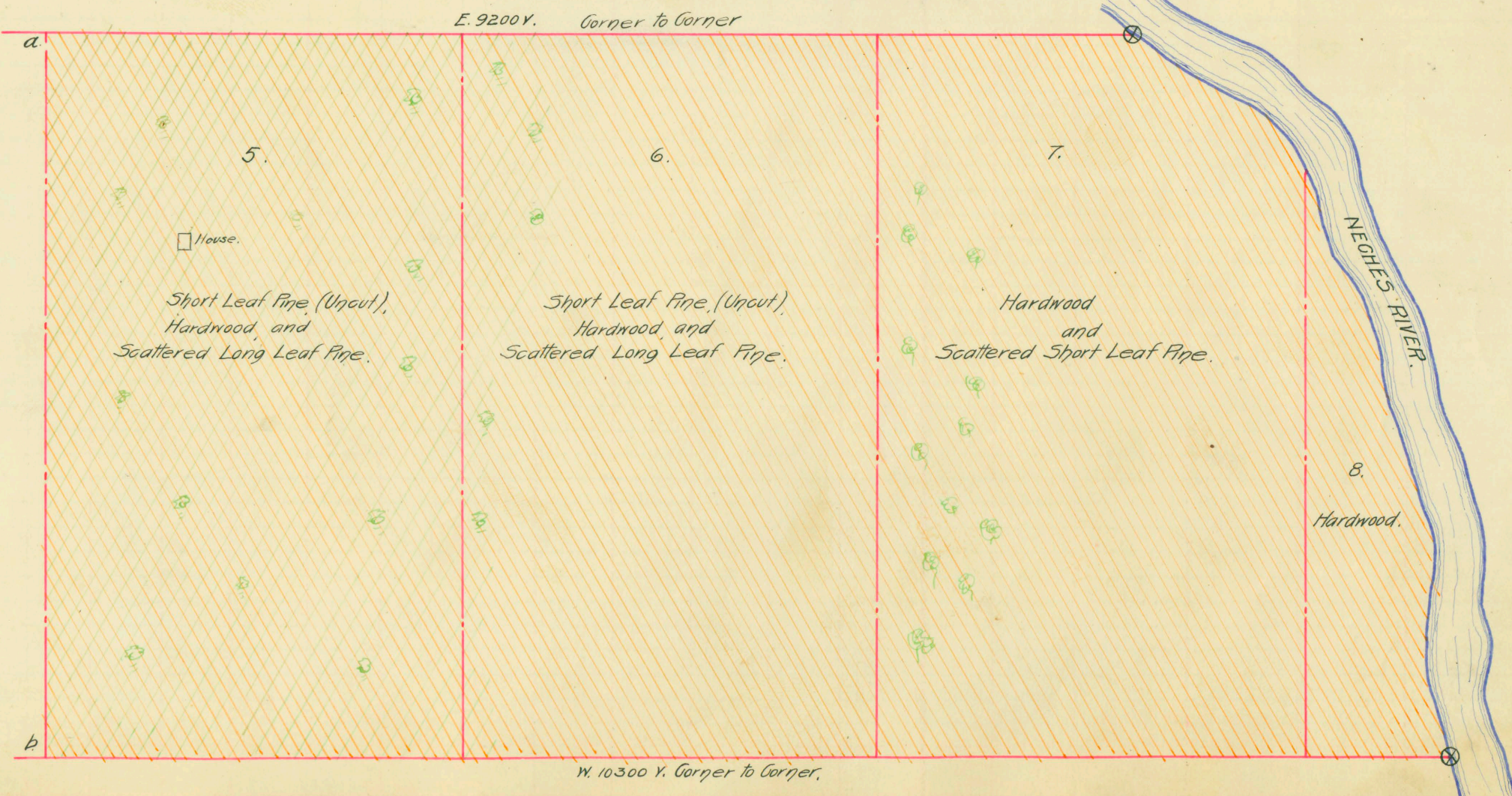
PINE REPRODUCTION					
Area No.	5	5	6	6	7
Acres	640	640	640	640	640
L. L. Seedlings					
S. L. Seedlings					
L. L. 7"	4M		1M		
L. L. 8" to 11"	20M		5M		
S. L. 7"		10M		4M	
S. L. 8" to 11"		64M		22M	2M
Total Feet	24M	74M	6M	26M	2M

MERCHANTABLE PINE (M. FEET) HERRING LOG SCALE—OUTSIDE BARK MEASUREMENT								
AREA NO.	ACRES	LONG LEAF		SHORT LEAF		LOGS TO TREE	LOGS TO M.	TOTAL FEET
		12" to 16"	17" & Up	12" to 16"	17" & Up			
5	640	169	853			3-4	7-9	1,022,000
5	640			472	2357	3-4	7-9	2,829,000
6	640	30	162			3-4	7-9	192,000
6	640			178	1010	3-4	7-9	1,188,000
7	640			7	23	3-4	7-9	30,000
Total Feet		199	1015	657	3390			5,261,000

Growth Vigorous Quality
 Isolated or Grouped Scattered Injury
 Jeopardized by Preferred Method of Logging

Method of Logging	AREA NO.	ACRES	TUPELO GUM	HARDWOOD (M. FEET) SCRIBNER-DOYLE LOG SCALE—INSIDE BARK MEASUREMENT												TOTAL		
				RED GUM		CYPRESS		WHITE OAK		RED OAK		HICK-ORY	ASH	BEECH	MAG-NOLIA	Feet	Ties	
				Ties	Feet	Ties	Feet	Ties	Feet	Ties	Feet							
Nearest Stream	Neches River	5	640	22	1008	279	423	108	1173	354	1040	175				21	959,000	3,644
		6	640	5	1963	738	597	138	1500	661	1690	458				16	2,016,000	5,750
Reproduction	Yes	7	640		1892	1025	490	145	1537	749	1192	454					2,373,000	5,111
		8	106		260	210			220	135	176	112					457,000	656

Revised Courses and Distances 2076 Quality good 5,805,000 15,161



See next.

ABSTRACT NO. 11

RECORD OF TIMBER CUTTING

DATE	PINE						HARDWOOD												
	LONG LEAF		SHORT LEAF		TIES	PILING	TUPELO GUM	RED GUM		CYPRESS		WHITE OAK		RED OAK		HICK-ORY	ASH	BEECH	MAG-NOLIA
	12" TO 16"	17" UP	12" TO 16"	17" UP				Ties	Feet	Ties	Feet	Ties	Feet	Ties	Feet				
1918 Aug.	✓	22672	<i>McClung Lbr. Co.</i>																
1919 Sept.		676957																	
Oct.		570358																	
1920 Jan.		16419																	
Feb.		7513																	
Oct.		71198																	
Nov.		161388																	
Dec.		30213																	
1921 Jan.		1294419																	

Filed.