

H. O. CO. ACREAGE 700 - R/W SUB NO. 1 Adelia Yokum SURVEY Hardin COUNTY, ABSTRACT NO. 532

Acreage found 700 - R/W Patentee _____ Estimated by Abe Magee Date November 10, 1910
 Timber Rights Expire _____ Mineral Rights Expire _____ H. O. Co. Represented by _____
 Encroachments, Conflict, Trespass, Houses, Fences, Fields None
 Has Land Been Cut Over? No When _____ By _____ Class of Timber Cut _____
 Topography Flat Soil Sandy Loam
 Adaptable for Agriculture Indications of _____

PINE REPRODUCTION

Area No.				
Acres	700			
L. L. Seedlings				
S. L. Seedlings				
L. L. 7"				
L. L. 8" to 11"				
S. L. 7"	23M			
S. L. 8" to 11"	103M			
Total Feet	126M			

MERCHANTABLE PINE (M. FEET) HERRING LOG SCALE—OUTSIDE BARK MEASUREMENT

AREA NO.	ACRES	LONG LEAF		SHORT LEAF		LOGS TO TREE	LOGS TO M.	TOTAL FEET
		12" To 16"	17" & UP	12" To 16"	17" & UP			
	700			655	2749	3½	10	3,404,000
Total Feet								

Growth Vigorous Quality Medium length, fair quality and sound
 Isolated or Grouped Scattered Injury None
 Jeopardized by _____ Preferred Method of Logging Tram

HARDWOOD (M. FEET) SCRIBNER-DOYLE LOG SCALE—INSIDE BARK MEASUREMENT

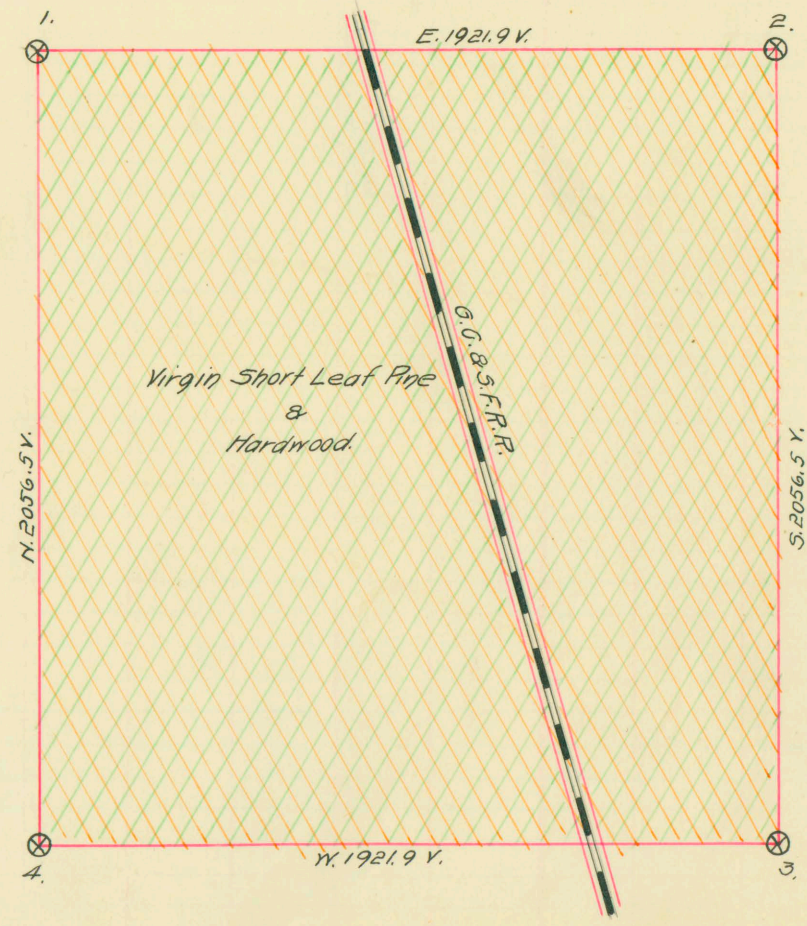
Method of Logging	AREA NO.	ACRES	TUPELO GUM	RED GUM		CYPRESS		WHITE OAK		RED OAK		HICK-ORY	ASH	BEECH	MAG-NOLIA	TOTAL	
				Ties	Feet	Ties	Feet	Ties	Feet	Ties	Feet					Feet	Ties
Nearest Stream		700		518	4			1400	70	1440	60		1		8	143,000	3,358
Reproduction	None																

Coarse Quality

Revised Courses and Distances

BEARING TREES

1. 16" White Oak for corner
2. 16" " S. 52 W. 8V
3. 14" Magnolia S. 53 E. 5V
4. 18" Pine S. 49 E. 1½V



ABSTRACT NO. 532

RECORD OF TIMBER CUTTING

DATE	PINE				TIES	PILING	TUPELO GUM	HARDWOOD											
	LONG LEAF		SHORT LEAF					RED GUM		CYPRESS		WHITE OAK		RED OAK		HICK-ORY	ASH	BEECH	MAG-NOLIA
	12" TO 16"	17" UP	12" TO 16"	17" UP				Ties	Feet	Ties	Feet	Ties	Feet	Ties	Feet				
			Hardwood Timber																
			Character class- ification of cutting																
			1913 Broth. Ford																
			1913																
			Jan. Pole Ties																
			Feb. Pole "																
			Mar. Pole "																
			Apr. Pole "																
			May Pole "																
			June Pole "																
			July Pole "																
			Oct. Pole "																
			Nov. Pole "																
			1914 Feb. Pole "																
			June Pole "																
			Aug. " "																
			Oct. " "																

See records
for
1913