

H. O. CO. ACREAGE 51 SUB NO. J. V. Davis SURVEY Hardin COUNTY, ABSTRACT NO. 670

Acres found 51 Patentee _____ Estimated by C. N. Otey, Jr. Date November 23, 1910
 Timber Rights Expire _____ Mineral Rights Expire _____ H. O. Co. Represented by _____
 Encroachments, Conflict, Trespass, Houses, Fences, Fields Fences and Fields
 Has Land Been Cut Over? Yes When 8-10 yrs. By Kirby Lumber Co. Class of Timber Cut Long Leaf Pine
 Topography Rolling Soil Sand and Clay
 Adaptable for Grazing Indications of _____

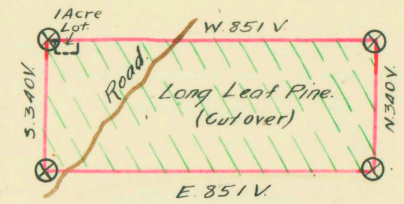
PINE REPRODUCTION				
Area No.	Acres	L. L. Seedlings	S. L. Seedlings	Total Feet
<u>50</u>				
L. L. 7"	<u>1M</u>			
L. L. 8" to 11"	<u>7M</u>			
S. L. 7"				
S. L. 8" to 11"				
Total Feet	<u>8M</u>			

MERCHANTABLE PINE (M. FEET) HERRING LOG SCALE—OUTSIDE BARK MEASUREMENT								
AREA NO.	ACRES	LONG LEAF		SHORT LEAF		LOGS TO TREE	LOGS TO M.	TOTAL FEET
		12" to 16"	17" & UP	12" to 16"	17" & UP			
	<u>50</u>	<u>30</u>	<u>137</u>			<u>2-3</u>	<u>9-11</u>	<u>167,000</u>
Total Feet								

Growth Fair Quality Medium
 Isolated or Grouped Scattered Injury _____
 Jeopardized by _____ Preferred Method of Logging Steam

Method of Logging	AREA NO.	ACRES	TUPELO GUM	HARDWOOD (M. FEET) SCRIBNER-DOYLE LOG SCALE—INSIDE BARK MEASUREMENT														
				RED GUM		CYPRESS		WHITE OAK		RED OAK		HICK-ORY	ASH	BEECH	MAG-NOLIA	TOTAL		
				Ties	Feet	Ties	Feet	Ties	Feet	Ties	Feet					Feet	Ties	
Nearest Stream																	<u>None</u>	
Reproduction																		

Revised Courses and Distances



In
volut

ABSTRACT NO. 610

RECORD OF TIMBER CUTTING

DATE	PINE						HARDWOOD													
	LONG LEAF		SHORT LEAF		TIES	PILING	TUPELO GUM	RED GUM		CYPRESS		WHITE OAK		RED OAK		HICK-ORY	ASH	BEECH	MAG-NOLIA	
	12" to 16"	17" UP	12" to 16"	17" UP				Ties	Feet	Ties	Feet	Ties	Feet	Ties	Feet					
1914 May	✓	39491	Camp	1	} W.O. Banks' form L 6 # 319 dated (blank) ¹⁹¹⁴ reports this survey															
July	✓	158759	✓	✓																
Aug.	✓	17666	✓	✓																
		<u>215916</u>																		

filed under heading camp 1