

H. O. CO. ACREAGE 386 SUB NO. C. A. Montgomery 2 SURVEY Hardin COUNTY, ABSTRACT NO. 715

Acreage found 386 Patentee _____ Estimated by Geo. Jordan Date November 13, 1910

Timber Rights Expire _____ Mineral Rights Expire _____ H. O. Co. Represented by _____

Encroachments, Conflict, Trespass, Houses, Fences, Fields None

Has Land Been Cut Over? Yes When 5-10 Yrs. By Olive Lumber Co. Class of Timber Cut Long Leaf Pine

Topography Flat Soil Sandy

Adaptable for Grazing and Agriculture Indications of _____

PINE REPRODUCTION					MERCHANTABLE PINE (M. FEET) HERRING LOG SCALE—OUTSIDE BARK MEASUREMENT								
Area No.	ACRES				AREA NO.	ACRES	LONG LEAF		SHORT LEAF		LOGS TO TREE	LOGS TO M.	TOTAL FEET
L. L. Seedlings				12" to 16"			17" & Up	12" to 16"	17" & Up				
	<u>356</u>	<u>10</u>				<u>356</u>	<u>317</u>	<u>1098</u>			<u>3</u>	<u>11</u>	<u>1,415,000</u>
S. L. Seedlings						<u>10</u>	<u>19</u>	<u>97</u>			<u>3½</u>	<u>10</u>	<u>116,000</u>
L. L. 7"	<u>16M</u>	<u>1M</u>											
L. L. 8" to 11"	<u>85M</u>	<u>3M</u>											
S. L. 7"													
S. L. 8" to 11"													
Total Feet	<u>101M</u>	<u>4M</u>			Total Feet		<u>336</u>	<u>1195</u>					<u>1,531,000</u>

Growth Vigorous Quality Fair length, sound and smooth

Isolated or Grouped Scattered Injury None

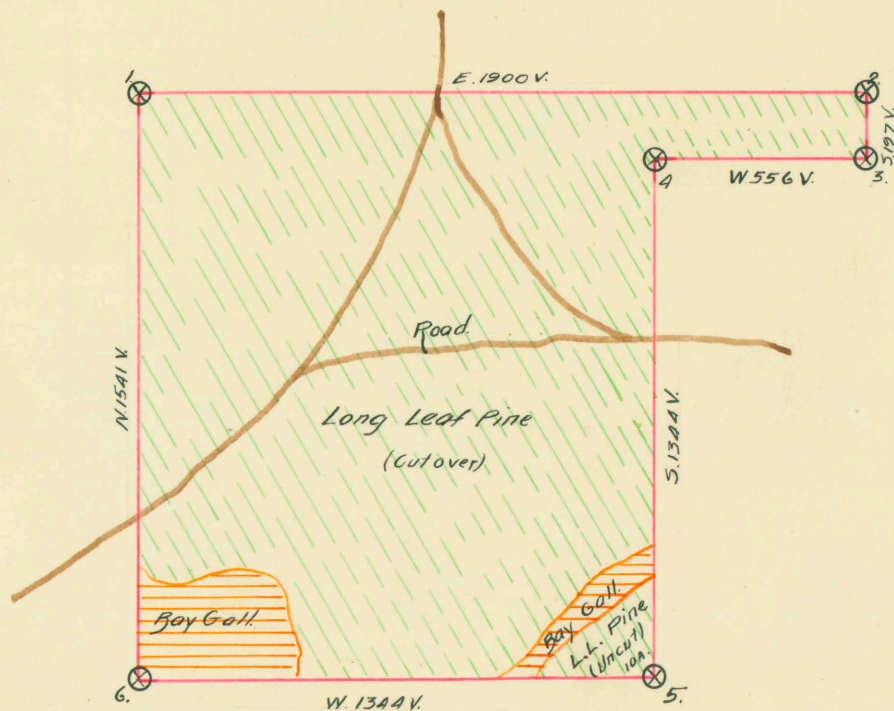
Jeopardized by _____ Preferred Method of Logging Tram and Carts

Method of Logging	AREA NO.	ACRES	TUPELO GUM	RED GUM		CYPRESS		WHITE OAK		RED OAK		HICKORY	ASH	BEECH	MAGNOLIA	TOTAL		
				Ties	Feet	Ties	Feet	Ties	Feet	Ties	Feet					Feet	Ties	
Nearest Stream																	<u>None</u>	
Reproduction																		

Revised Courses and Distances

BEARING TREES

- 24" Pine N. 30 W. 6V
- 12" " S. 55 W. 10V
- 7" " S. 4 E. 9V
- 8" Ash N. 35 E. 6V
- 24" Pine N. 80 E. 5V
- 12" Gum W. 4V



See
abstract

ABSTRACT NO. 115

RECORD OF TIMBER CUTTING

DATE	PINE						HARDWOOD												
	LONG LEAF		SHORT LEAF		TIES	PILING	TUPELO GUM	RED GUM		CYPRESS		WHITE OAK-		RED OAK		HICK-ORY	ASH	BEECH	MAG-NOLIA
	12" to 16"	17" UP	12" to 16"	17" UP				Ties	Feet	Ties	Feet	Ties	Feet	Ties	Feet				
1921 May	May	820814	Camp Meyer																

Field notes heading of Camp Meyer.