

H. O. CO. ACREAGE 81 SUB NO. H. & T. C. Sec. 218 SURVEY Hardin COUNTY, ABSTRACT NO. 795

Acres found 81 Patentee _____ Estimated by Abe Magee Date November 11, 1910

Timber Rights Expire _____ Mineral Rights Expire _____ H. O. Co. Represented by _____

Encroachments, Conflict, Trespass, Houses, Fences, Fields None

Has Land Been Cut Over? No When _____ By _____ Class of Timber Cut _____

Topography Flat Soil Sandy Loam and Clay

Adaptable for Agriculture Indications of _____

| PINE REPRODUCTION | | | | | MERCHANTABLE PINE (M. FEET) HERRING LOG SCALE—OUTSIDE BARK MEASUREMENT | | | | | |
|-------------------|-------|------------|------------|--------------|--|------------|----|---------|--|--|
| Area No. | ACRES | LONG LEAF | SHORT LEAF | LOGS TO TREE | LOGS TO M. | TOTAL FEET | | | | |
| | | 12" to 16" | 17" & Up | 12" to 16" | 17" & Up | | | | | |
| 81 | 81 | | | 77 | 426 | 3½ | 10 | 503,000 | | |
| L. L. Seedlings | | | | | | | | | | |
| S. L. Seedlings | | | | | | | | | | |
| L. L. 7" | | | | | | | | | | |
| L. L. 8" to 11" | | | | | | | | | | |
| S. L. 7" | | | | | | | | | | |
| S. L. 8" to 11" | 13M | | | | | | | | | |
| Total Feet | 13M | | | | | | | | | |

Growth Fair Quality Medium length, sound but coarse

Isolated or Grouped Scattered Injury None

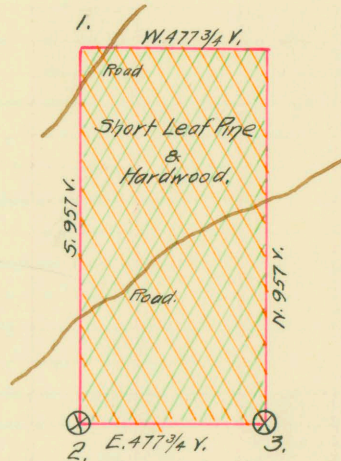
Jeopardized by _____ Preferred Method of Logging Tram

| Method of Logging | AREA NO. | ACRES | TUPELO GUM | RED GUM | | CYPRESS | | WHITE OAK | | RED OAK | | HICK-ORY | ASH | BEECH | MAG-NOLIA | TOTAL | |
|-------------------|----------|-------|------------|---------|------|---------|------|-----------|------|---------|------|----------|-----|-------|-----------|-------|------|
| | | | | Ties | Feet | Ties | Feet | Ties | Feet | Ties | Feet | | | | | Feet | Ties |
| <u>With Pine</u> | | 81 | | 40 | | | | 160 | 1 | 80 | | | | | 2 | 3,000 | 280 |
| Nearest Stream | | | | | | | | | | | | | | | | | |
| Reproduction | | | | | | | | | | | | | | | | | |

Revised Courses and Distances

BEARING TREES

1. No bearing tree marked 12" Pine
2. 26" Pine N. 60 E. 6V
3. 14" Pin Oak E. 4V



ABSTRACT NO. 195

RECORD OF TIMBER CUTTING

| DATE | PINE | | | | | | HARDWOOD | | | | | | | | | | | | |
|-----------|------------|--------|------------|--------|------|--------|------------|---------|------|---------|------|-----------|------|---------|------|---------|-----|-------|----------|
| | LONG LEAF | | SHORT LEAF | | TIES | PILING | TUPELO GUM | RED GUM | | CYPRESS | | WHITE OAK | | RED OAK | | HICKORY | ASH | BEECH | MAGNOLIA |
| | 12" TO 16" | 17" UP | 12" TO 16" | 17" UP | | | | Ties | Feet | Ties | Feet | Ties | Feet | Ties | Feet | | | | |
| 1913 Aug. | | 14974 | Camp 13 | | | | | | | | | | | | | | | | |
| Sept. | | 190237 | | | | | | | | | | | | | | | | | |
| Oct. | | 41001 | | | | | | | | | | | | | | | | | |
| | | 356217 | | | | | | | | | | | | | | | | | |

1913

Aug.
Sept.
Oct.

14974 Camp 13

See Abstr. 790 referring to W. A. Banks' S.D. #6 = #197 Dated 12/15/13
 which states that abstr 195's area has been cut over, but
 some merchantable Pine uncut

unable to locate
these reports.