

H. O. CO. ACREAGE 76 SUB NO. B. F. Childress SURVEY Jasper COUNTY, ABSTRACT NO. 116

Acres found 76 Patentee _____ Estimated by F. E. Dionne Date August 16, 1910
 Timber Rights Expire _____ Mineral Rights Expire _____ H. O. Co. Represented by _____
 Encroachments, Conflict, Trespass, Houses, Fences, Fields None
 Has Land Been Cut Over? Yes When _____ By _____ Class of Timber Cut Long Leaf Pine
 Topography Flat Soil Sandy
 Adaptable for Grazing Indications of Flowing Artesian Well

PINE REPRODUCTION

Area No.				
Acres	<u>76</u>			
L. L. Seedlings				
S. L. Seedlings				
L. L. 7"	<u>3M</u>			
L. L. 8" to 11"	<u>21M</u>			
S. L. 7"				
S. L. 8" to 11"				
Total Feet	<u>24M</u>			

MERCHANTABLE PINE (M. FEET) HERRING LOG SCALE—OUTSIDE BARK MEASUREMENT

AREA NO.	ACRES	LONG LEAF		SHORT LEAF		LOGS TO TREE	LOGS TO M.	TOTAL FEET
		12" To 16"	17" & UP	12" To 16"	17" & UP			
	<u>76</u>	<u>144</u>	<u>113</u>			<u>3</u>	<u>12-15</u>	<u>257,000</u>
Total Feet								

Growth Fair
 Isolated or Grouped Scattered
 Jeopardized by _____

Quality Very sound and smooth.
 Injury None
 Preferred Method of Logging Tram and Wagons

HARDWOOD (M. FEET) SCRIBNER-DOYLE LOG SCALE—INSIDE BARK MEASUREMENT

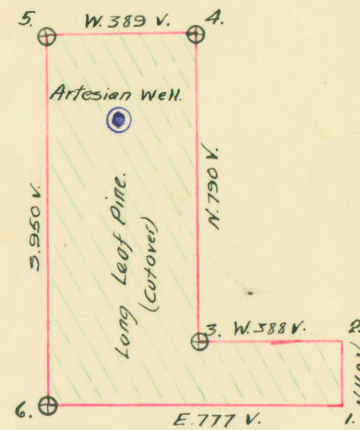
Method of Logging	AREA NO.	ACRES	TUPELO GUM	RED GUM		CYPRESS		WHITE OAK		RED OAK		HICK-ORY	ASH	BEECH	MAG-NOLIA	TOTAL	
				Ties	Feet	Ties	Feet	Ties	Feet	Ties	Feet					Feet	Ties
Nearest Stream																	<u>None</u>
Reproduction <u>None</u>																	

Revised Courses and Distances

H. O. Co. owns timber only.

BEARING TREES

1. No corner
2. "
3. 15" Pine
4. 14" " S. 70° E. 12V
5. 15" " S. 45° W. 15V
6. 20" " S. 40° E. 8V



ABSTRACT NO. 116

RECORD OF TIMBER CUTTING

DATE	PINE						HARDWOOD												
	LONG LEAF		SHORT LEAF		TIES	PILING	TUPELO GUM	RED GUM		CYPRESS		WHITE OAK		RED OAK		HICKORY	ASH	BEECH	MAGNOLIA
	12" to 16"	17" Up	12" to 16"	17" Up				Ties	Feet	Ties	Feet	Ties	Feet	Ties	Feet				
1914 Jan ✓		217852	Camp	17															
Feb. ✓		68181																	
May ✓		1766																	
		<u>287799</u>																	

W. L. Hawthornes form, S. I. 6 #425 Dated 11/29/14 reports this survey denuded of merchantable Pine.