

H. O. CO. ACREAGE 585 SUB NO. H. & T.C.R.R. Sec. 119 SURVEY Jasper COUNTY, ABSTRACT NO. 193

Acreage found 585 Patentee _____ Estimated by W. P. Cruse Date October 4, 1910
 Timber Rights Expire _____ Mineral Rights Expire _____ H. O. Co. Represented by _____
 Encroachments, Conflict, Trespass, Houses, Fences, Fields Fences, Fields
 Has Land Been Cut Over? Yes When 15 yrs. By Texas Tram & Lumber Co. Class of Timber Cut Long Leaf Pine
 Topography Slightly Rolling Soil Sandy Loam
 Adaptable for Agriculture and Grazing Indications of _____

PINE REPRODUCTION			
Area No.	A	B	
Acres	560	20	
L. L. Seedlings			
S. L. Seedlings			
L. L. 7"	5M		
L. L. 8" to 11"	68M		
S. L. 7"		8M	
S. L. 8" to 11"		4M	
Total Feet	73M	12M	

MERCHANTABLE PINE (M. FEET) HERRING LOG SCALE—OUTSIDE BARK MEASUREMENT								
AREA NO.	ACRES	LONG LEAF		SHORT LEAF		LOGS TO TREE	LOGS TO M.	TOTAL FEET
		12" to 16"	17" & UP	12" to 16"	17" & UP			
A	560	600	1357			3 1/2	12	1,957,000
B	20			15	21	3 1/2	14	36,000
Total Feet								1,993,000

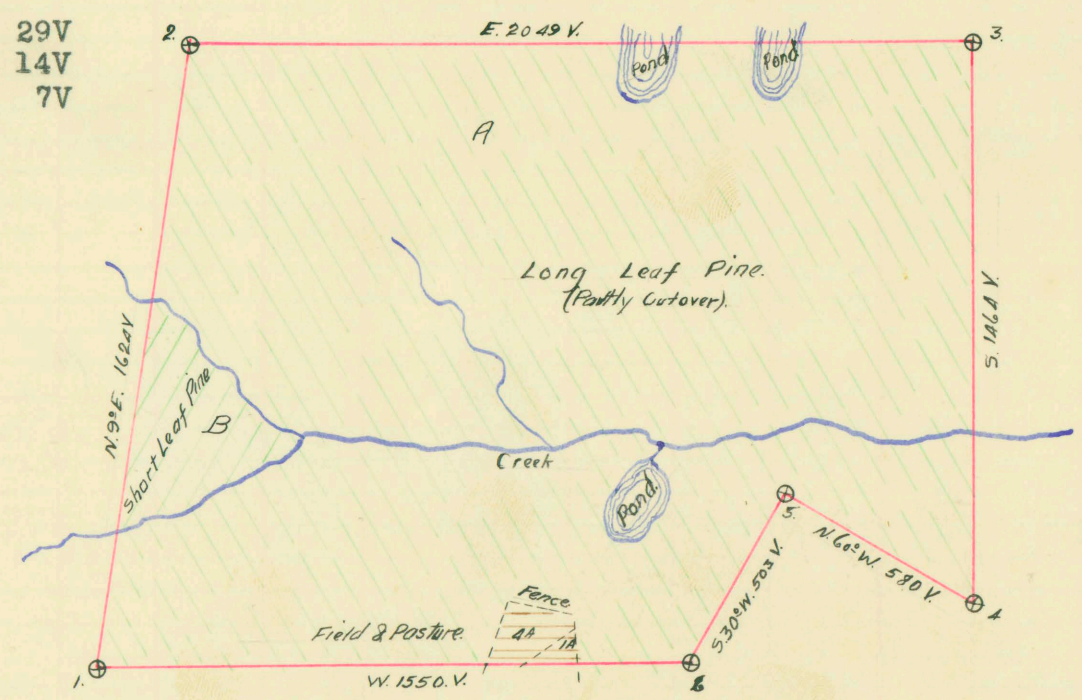
Growth Vigorous Quality Smooth, extra good.
 Isolated or Grouped Groups scattered over survey Injury None
 Jeopardized by _____ Preferred Method of Logging Wagon

Method of Logging	AREA NO.	ACRES	TUPELO GUM	RED GUM		CYPRESS		WHITE OAK		RED OAK		HICK-ORY	ASH	BEECH	MAG-NOLIA	TOTAL	
				Ties	Feet	Ties	Feet	Ties	Feet	Ties	Feet					Feet	Ties
				None													
Nearest Stream																	
Reproduction																	

Revised Courses and Distances

BEARING TREES

1. 18" Pine W. 10V
2. 25" " N. 15° W. 8V
3. 24" " S. 6V
4. 18" " N. 60° W. 29V
5. 8" " N. 60° W. 14V
6. 20" " S. 60° E. 7V



ABSTRACT NO. 193.

RECORD OF TIMBER CUTTING

DATE	PINE						HARDWOOD														
	LONG LEAF		SHORT LEAF		TIES	PILING	TUPELO GUM	RED GUM		CYPRESS		WHITE OAK		RED OAK		HICKORY	ASH	BEECH	MAGNOLIA		
	12" TO 16"	17" UP	12" TO 16"	17" UP				Ties	Feet	Ties	Feet	Ties	Feet	Ties	Feet						
1912 Feb. ✓		87339	Camp 5																		
Mar. ✓		542612																			
Apr. ✓		667272																			
May. ✓		911685																			
June. ✓		46526																			
		<u>2253434</u>																			

See Inspector W. L. Hawthorn's Form S. I. C. # 112
 Dated 8/6/12 reporting this survey denuded of
 merchantable Pine.