

H. O. CO. ACREAGE 640 SUB NO. H. & T.C.R.R. Sec. 49 SURVEY Jasper COUNTY, ABSTRACT NO. 297

Acreage found 640 Patentee _____ Estimated by H. H. Shaw Date September 9, 1910
 Timber Rights Expire _____ Mineral Rights Expire _____ H. O. Co. Represented by _____
 Encroachments, Conflict, Trespass, Houses, Fences, Fields No
 Has Land Been Cut Over? Yes When 10 yrs. By _____ Class of Timber Cut Long Leaf Pine
 Topography Part Flat, part Rolling Soil Sandy
 Adaptable for Grazing Indications of _____

PINE REPRODUCTION				
Area No.	A	B		
Acres	206	440		
L. L. Seedlings				
S. L. Seedlings				
L. L. 7"		5M		
L. L. 8" to 11"		36M		
S. L. 7"	4M			
S. L. 8" to 11"	30M			
Total Feet	34M	41M		

MERCHANTABLE PINE (M. FEET) HERRING LOG SCALE—OUTSIDE BARK MEASUREMENT								
AREA NO.	ACRES	LONG LEAF		SHORT LEAF		LOGS TO TREE	LOGS TO M.	TOTAL FEET
		12" to 16"	17" & Up	12" to 16"	17" & Up			
A	206			299	318	3½	10	617,000
B	440	92	44			3	10	136,000
Total Feet								753,000

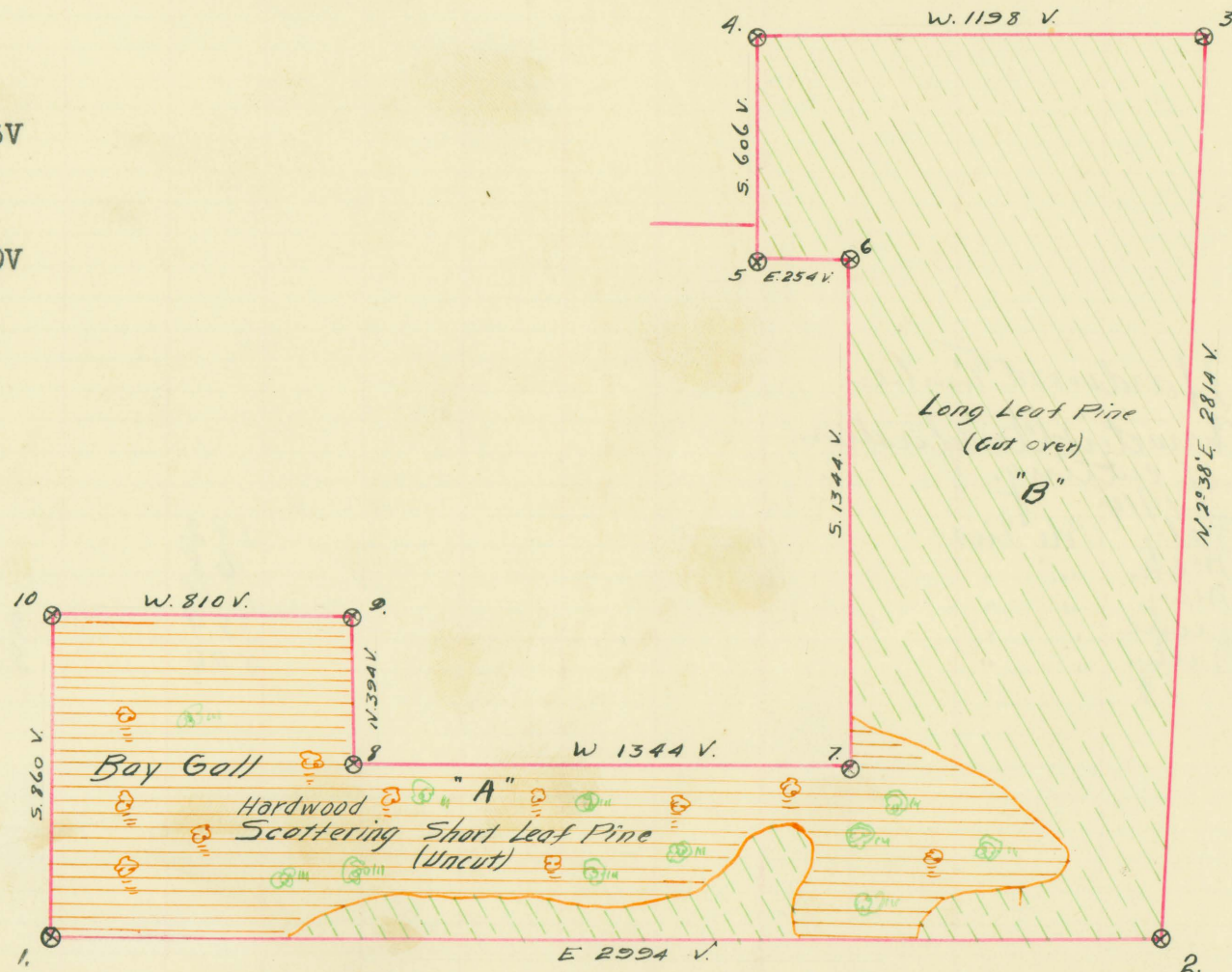
Growth Vigorous Quality Smooth
 Isolated or Grouped Scattered Injury None
 Jeopardized by _____ Preferred Method of Logging Tram and Carts

Method of Logging	HARDWOOD (M. FEET) SCRIBNER-DOYLE LOG SCALE—INSIDE BARK MEASUREMENT														TOTAL		
	AREA NO.	ACRES	TUPELO GUM	RED GUM		CYPRESS		WHITE OAK		RED OAK		HICKORY	ASH	BEECH	MAGNOLIA	Feet	Ties
				Ties	Feet	Ties	Feet	Ties	Feet	Ties	Feet						
Nearest Stream <u>Sabine River</u>	A	206						213	58	92	44					102,000	305
Reproduction																	

Revised Courses and Distances

BEARING TREES

1. Pin Oak 12" S. 65° E. 6V
2. Pine 30" S. 20° E. 14V
3. " 20" S. 55° W. 20V
4. D.Pine 15" N. 7V
5. " 10" N. 55° E. 10V
6. Pine 12" S. 20° W. 20V
7. Cut down
8. Bay 20" E. 16V
9. Sweet Gum 10" S. 10V
10. " 20" E. 2V



ABSTRACT NO. 297

RECORD OF TIMBER CUTTING

DATE	PINE						HARDWOOD												
	LONG LEAF		SHORT LEAF		TIES	PILING	TUPELO GUM	RED GUM		CYPRESS		WHITE OAK		RED OAK		HICK- ORY	ASH	BEECH	MAG- NOLIA
	12" to 16"	17" Up	12" to 16"	17" Up				Ties	Feet	Ties	Feet	Ties	Feet	Ties	Feet				

Hardwood timber
Character+Classification
of cutting.
of 1914
Feb. Pole Ties
mch. " "
may " "
June " "
July " "

182
68
114
389
5-06

21
83