

H. O. CO. ACREAGE 640 SUB NO. H. & T.C.R.R. Sec. 11 SURVEY Jasper COUNTY, ABSTRACT NO. 307

Acreage found 640 Patentee Estimated by Earl Dionne Date September 26, 1910  
 Timber Rights Expire Mineral Rights Expire H. O. Co. Represented by  
 Encroachments, Conflict, Trespass, Houses, Fences, Fields Encroachments, Fences, Field  
 Has Land Been Cut Over? Yes When By Texas Tram & Lumber Co. Class of Timber Cut Long Leaf Pine  
 Topography Flat Soil Sandy Loam  
 Adaptable for Agriculture and Grazing Indications of

PINE REPRODUCTION				
Area No.	A	B	C	D
Acres	40	35		40
L. L. Seedlings			25A	
S. L. Seedlings				
L. L. 7"	15M	13M		
L. L. 8" to 11"	74M	73M		
S. L. 7"				4M
S. L. 8" to 11"				23M
Total Feet	89M	86M		27M

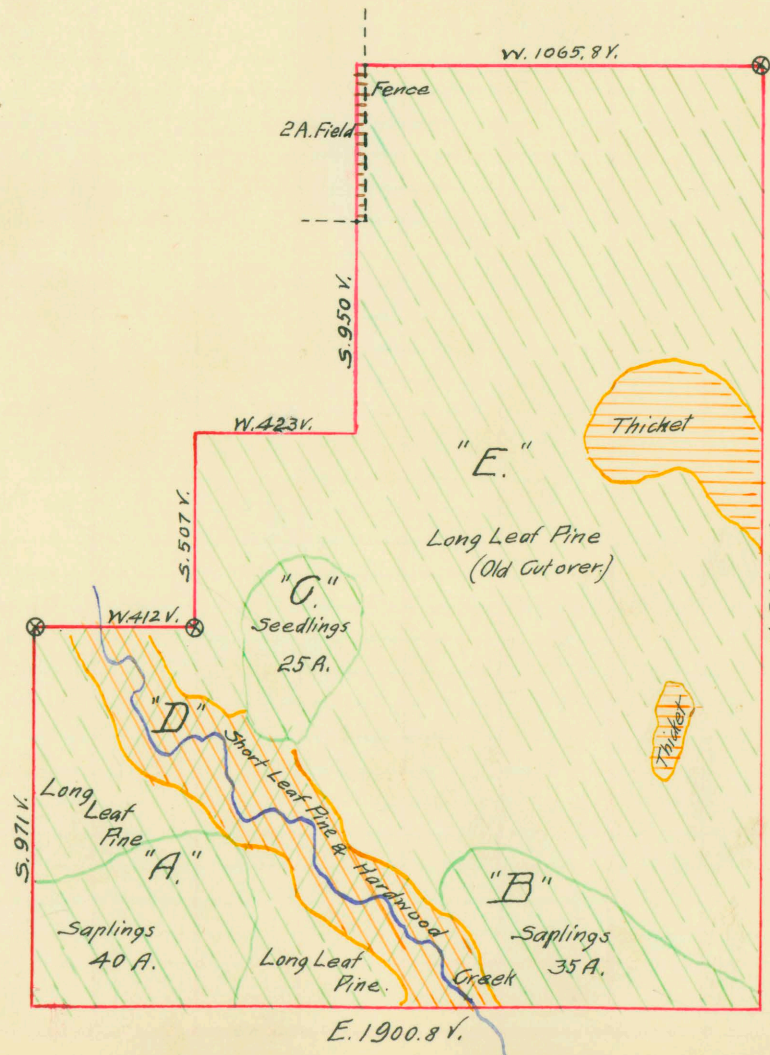
MERCHANTABLE PINE (M. FEET) HERRING LOG SCALE—OUTSIDE BARK MEASUREMENT								
AREA NO.	ACRES	LONG LEAF		SHORT LEAF		LOGS TO TREE	LOGS TO M.	TOTAL FEET
		12" to 16"	17" & Up	12" to 16"	17" & Up			
A-B-E	573	1536	3288			3 1/2	12	4,824,000
D	40			90	273	3 1/2	11	363,000
Total Feet								5,187,000

Growth Vigorous Quality  
 Isolated or Grouped Grouped Injury  
 Jeopardized by Preferred Method of Logging

Method of Logging	HARDWOOD (M. FEET) SCRIBNER-DOYLE LOG SCALE—INSIDE BARK MEASUREMENT																
	AREA NO.	ACRES	TUPELO GUM	RED GUM		CYPRESS		WHITE OAK		RED OAK		HICK-ORY	ASH	BEECH	MAG-NOLIA	TOTAL	
				Ties	Feet	Ties	Feet	Ties	Feet	Ties	Feet					Feet	Ties
Nearest Stream	D	40		200				15	150					2		17,000	350
Reproduction																	

Fair quality.

Revised Courses and Distances





ABSTRACT NO. 307

RECORD OF TIMBER CUTTING

DATE	PINE					HARDWOOD														
	LONG LEAF		SHORT LEAF		TIES	PILING	TUPELO GUM	RED GUM		CYPRESS		WHITE OAK		RED OAK		HICKORY	ASH	BEECH	MAGNOLIA	
	12" to 16"	17" UP	12" to 16"	17" UP				Ties	Feet	Ties	Feet	Ties	Feet	Ties	Feet					
1911 Aug. ✓		838094	Camp 5																	
Sept.		998	"																	
Dec. ✓		1314573	"																	
		<u>2153663</u>																		
1912 Jan. ✓		748839	"																	
Feb. ✓		24900	"																	
		<u>2927404</u>																		

See U. C. Du Bois' form & I-6-#76 dated 3/2/12 reporting this survey as denuded except 6500 feet now cut over area.