

H. O. CO. ACREAGE 534 SUB NO. Wm. Loftin SURVEY Jasper COUNTY, ABSTRACT NO. 355

Acres found 534 Patentee _____ Estimated by David Gracie Date August 17, 1910
 Timber Rights Expire _____ Mineral Rights Expire _____ H. O. Co. Represented by _____
 Encroachments, Conflict, Trespass, Houses, Fences, Fields None
 Has Land Been Cut Over? No When _____ By _____ Class of Timber Cut _____
 Topography Rough, Rolling and Rocky Soil Sand
 Adaptable for _____ Indications of _____

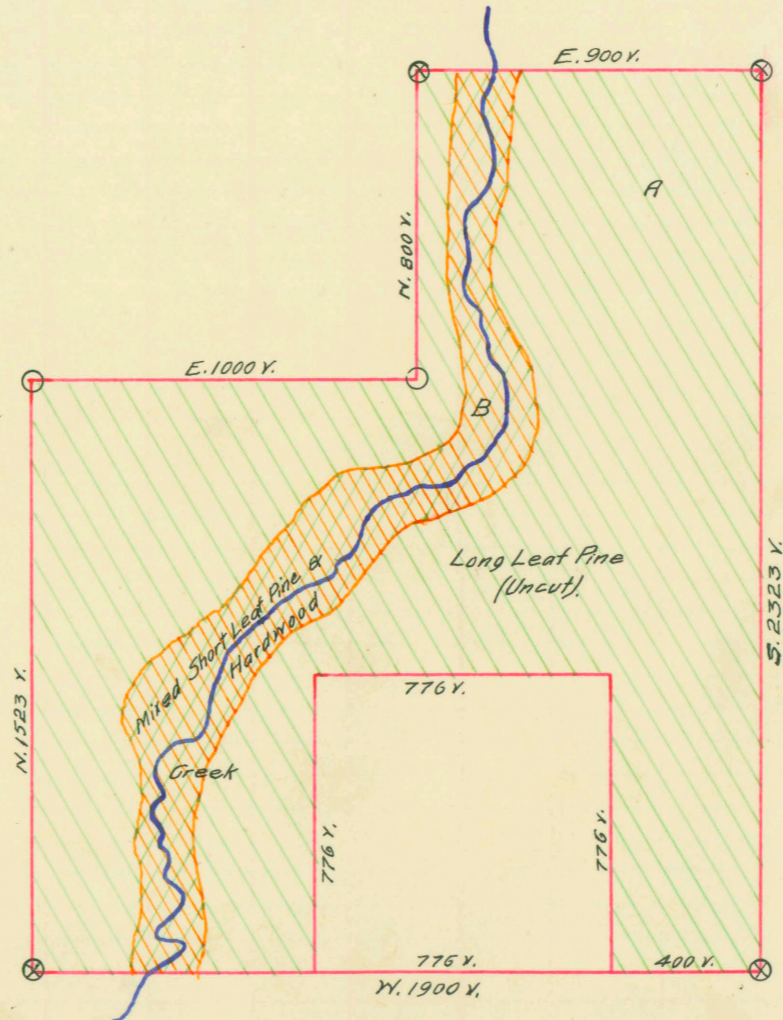
PINE REPRODUCTION				
Area No.				
Acres				
L. L. Seedlings				
S. L. Seedlings				
L. L. 7"			None	
L. L. 8" to 11"				
S. L. 7"				
S. L. 8" to 11"				
Total Feet				

MERCHANTABLE PINE (M. FEET) HERRING LOG SCALE—OUTSIDE BARK MEASUREMENT								
AREA NO.	ACRES	LONG LEAF		SHORT LEAF		LOGS TO TREE	LOGS TO M.	TOTAL FEET
		12" to 16"	17" & UP	12" to 16"	17" & UP			
A	470		952			4	6	952,000
B	64				477	4	6	477,000
Total Feet								1,429,000

Growth _____ Quality Good
 Isolated or Grouped _____ Injury None
 Jeopardized by _____ Preferred Method of Logging Tram

Method of Logging	AREA NO.	ACRES	TUPELO GUM	RED GUM		CYPRESS		WHITE OAK		RED OAK		HICK-ORY	ASH	BEECH	MAG-NOLIA	TOTAL		
				Ties	Feet	Ties	Feet	Ties	Feet	Ties	Feet					Feet	Ties	
Nearest Stream	B	64							150		100	15		100	20		385,000	
Reproduction	<u>None</u>																	

Revised Courses and Distances



ABSTRACT NO. 355

RECORD OF TIMBER CUTTING

DATE	PINE						HARDWOOD												
	LONG LEAF		SHORT LEAF		TIES	PILING	TUPELO GUM	RED GUM		CYPRESS		WHITE OAK		RED OAK		HICK-ORY	ASH	BEECH	MAG-NOLIA
	12" TO 16"	17" UP	12" TO 16"	17" UP				Ties	Feet	Ties	Feet	Ties	Feet	Ties	Feet				
1914 Jan. ✓		211693	Camp 15																
Feb. ✓		11544	"																
Mar. ✓		861358	"																
May ✓		16624	"																
		1101219																	
1917 May		77830	Camp 15																
		1179049	✓																

W. L. Hawthornes form S.D. - 6 - #417 dated 11/2/14 reports this survey denuded of merchantable pine except about 145,000 feet.