

H. O. CO. ACREAGE 88 SUB NO. B. Richardson SURVEY Jasper COUNTY, ABSTRACT NO. 414

Acres found 88 Patentee \_\_\_\_\_ Estimated by Geo. Jordan Date August 20-21, 1910  
 Timber Rights Expire \_\_\_\_\_ Mineral Rights Expire \_\_\_\_\_ H. O. Co. Represented by \_\_\_\_\_  
 Encroachments, Conflict, Trespass, Houses, Fences, Fields Fence, 2 Fields, House  
 Has Land Been Cut Over? \_\_\_\_\_ When \_\_\_\_\_ By \_\_\_\_\_ Class of Timber Cut \_\_\_\_\_  
 Topography Rolling Soil Alluvial and Sand  
 Adaptable for Agriculture and Grazing Indications of \_\_\_\_\_

PINE REPRODUCTION				
Area No.	ACRES			
Acres	<u>83</u>			
L. L. Seedlings				
S. L. Seedlings				
L. L. 7"				
L. L. 8" to 11"				
S. L. 7"	<u>9M</u>			
S. L. 8" to 11"	<u>41M</u>			
Total Feet	<u>50M</u>			

MERCHANTABLE PINE (M. FEET) HERRING LOG SCALE—OUTSIDE BARK MEASUREMENT								
AREA NO.	ACRES	LONG LEAF		SHORT LEAF		LOGS TO TREE	LOGS TO M.	TOTAL FEET
		12" to 16"	17" & UP	12" to 16"	17" & UP			
	<u>83</u>			<u>222</u>	<u>218</u>			<u>440,000</u>
Total Feet								

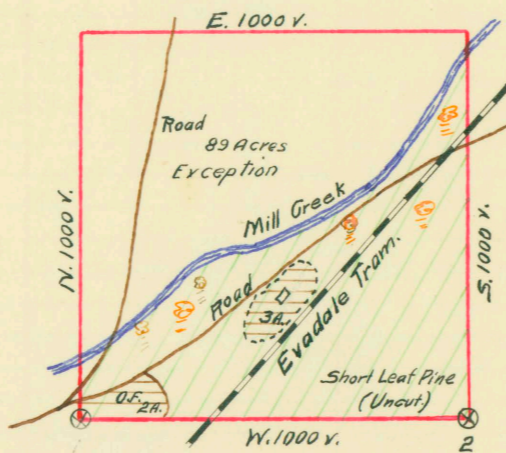
Growth Vigorous Quality Good length, sound and smooth  
 Isolated or Grouped Groups scattered over survey Injury None  
 Jeopardized by \_\_\_\_\_ Preferred Method of Logging Carts and Tram

Method of Logging	AREA NO.	ACRES	TUPELO GUM	RED GUM		CYPRESS		WHITE OAK		RED OAK		HICK-ORY	ASH	BEECH	MAG-NOLIA	TOTAL		
				Ties	Feet	Ties	Feet	Ties	Feet	Ties	Feet					Feet	Ties	
Nearest Stream								<u>375</u>		<u>420</u>								<u>795</u>
Reproduction																		

Revised Courses and Distances

BEARING TREES

- 1. 8" Pine S. 25° E. 8V
- 2. Pine S. 10V



ABSTRACT NO. 414

RECORD OF TIMBER CUTTING

DATE	PINE					HARDWOOD												
	LONG LEAF		SHORT LEAF	TIES	PILING	TUPELO GUM	RED GUM		CYPRESS		WHITE OAK		RED OAK		HICKORY	ASH	BEECH	MAGNOLIA
	12" to 16"	17" UP	12" to 16" By 17" UP				Ties	Feet	Ties	Feet	Ties	Feet	Ties	Feet				
1911 May. ✓		105393	Camp #17															
June ✓		234796																
July ✓		26902																
Aug. ✓		89439																
		456530																
1912 Dec. ✓		12827																
		469357																

12/1/13/14 Banks  
reports all pine cut