

H. O. CO. ACREAGE 640 SUB NO. T. & N. O. R. R. Sec. 83 SURVEY Jasper COUNTY, ABSTRACT NO. 506

Acreage found 640 Patentee Estimated by L. Q. Huey Date September 8, 1910  
 Timber Rights Expire Mineral Rights Expire H. O. Co. Represented by  
 Encroachments, Conflict, Trespass, Houses, Fences, Fields None  
 Has Land Been Cut Over? Yes When 20 yrs. By Kirby Lumber Co. Class of Timber Cut Long Leaf Pine  
 Topography Flat Soil Clay  
 Adaptable for Grazing Indications of

PINE REPRODUCTION			
Area No.	A	C	
Acres	160	400	
L. L. Seedlings			
S. L. Seedlings			
L. L. 7"		7M	
L. L. 8" to 11"		34M	
S. L. 7"	5M		
S. L. 8" to 11"	26M		
Total Feet	31M	41M	

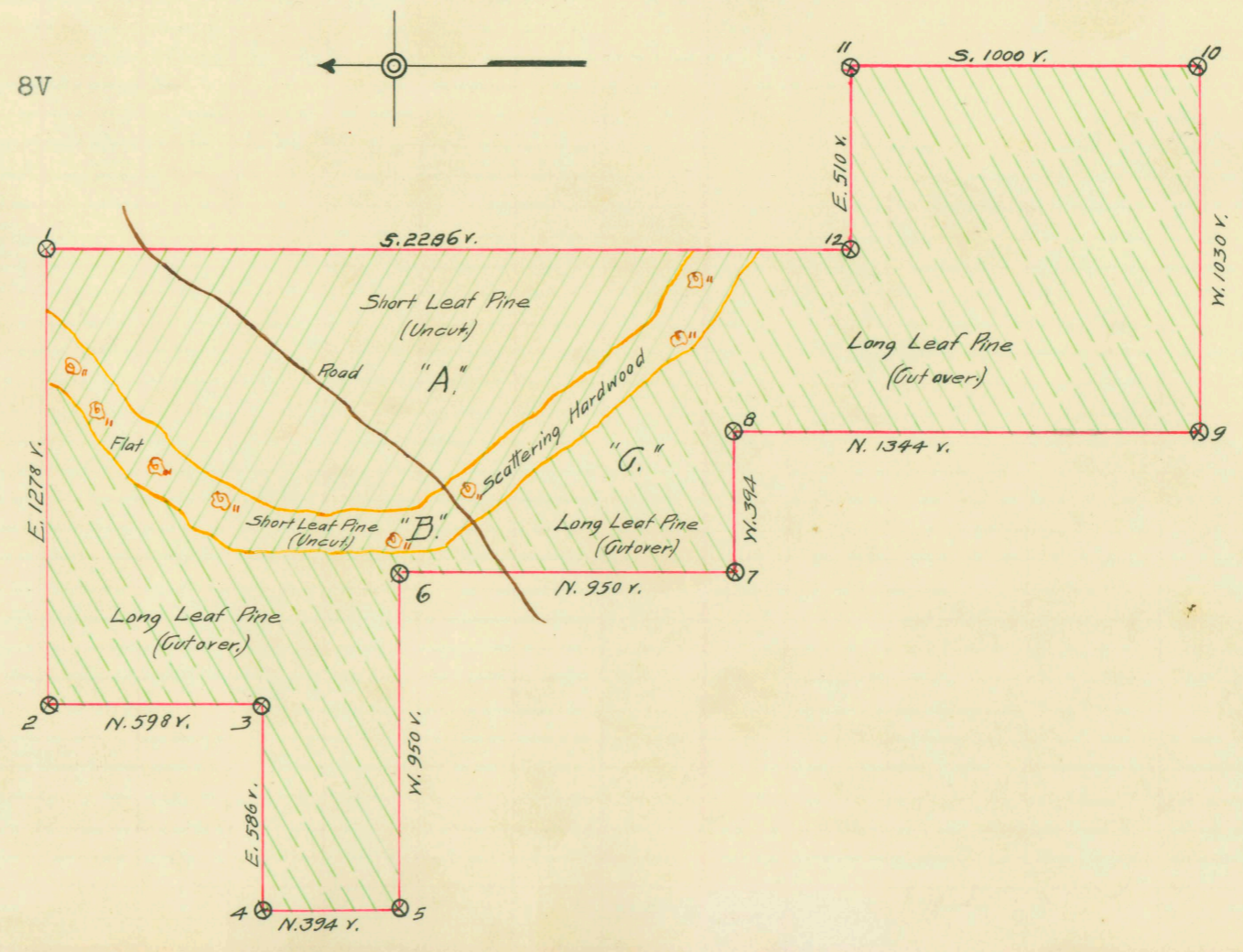
MERCHANTABLE PINE (M. FEET) HERRING LOG SCALE—OUTSIDE BARK MEASUREMENT								
AREA NO.	ACRES	LONG LEAF		SHORT LEAF		LOGS TO TREE	LOGS TO M.	TOTAL FEET
		12" to 16"	17" & Up	12" to 16"	17" & Up			
A	160			568	473	4	15	1,041,000
B	80			63	60	4	15	123,000
C	400	58	20			4	15	78,000
Total Feet		58	20	631	533			1,242,000

Growth Fair Quality Fair  
 Isolated or Grouped Scattered Injury None  
 Jeopardized by Preferred Method of Logging Tram and Carts

HARDWOOD (M. FEET) SCRIBNER-DOYLE LOG SCALE—INSIDE BARK MEASUREMENT																		
Method of Logging	AREA NO.	ACRES	TUPELO GUM	RED GUM		CYPRESS		WHITE OAK		RED OAK		HICKORY	ASH	BEECH	MAGNOLIA	TOTAL		
				Ties	Feet	Ties	Feet	Ties	Feet	Ties	Feet					Feet	Ties	
Nearest Stream	B	80		200						320								520
Reproduction																		

Revised Courses and Distances

- BEARING TREES
- 18" White Oak N. 40° E. 8V
  - 20" Pine E. 4V
  - 8" " N. 70° W. 8V
  - 16" Gum S. 40° W. 5V
  - 10" Pine S. 12° W. 8V
  - 8" " S. 45° E. 2V
  - 14" " N. 75° W. 3V
  - 12" " N. 30° E. 6V
  - 14" Gum N. 3° W. 7V
  - 10" Pine W. 10V
  - 19" " N. 20V
  - 16" " S. 12° E. 7V



ABSTRACT NO. 506

RECORD OF TIMBER CUTTING

DATE	PINE					HARDWOOD													
	LONG LEAF		SHORT LEAF		TIES	PILING	TUPELO GUM	RED GUM		CYPRESS		WHITE OAK		RED OAK		HICKORY	ASH	BEECH	MAGNOLIA
	12" TO 16"	17" UP	16" 1/2	17" UP				Ties	Feet	Ties	Feet	Ties	Feet	Ties	Feet				
1911 Aug.	✓	87185	246163	✓	✓														
Sept.	✓	266163	✓	✓															
Oct.	✓	659183	✓	✓															
Nov.	✓	261887	✓	✓															
1912 Jan.		1274418	✓	✓															
		541																	
		1274959																	

Inspector W. L. Hawthorn's form S I - 6 - # 222  
 Dated 12/27/12, reports this survey denuded of merchantable table pine.