

H. O. CO. ACREAGE 640 SUB NO. T. & N.O.R.R. Sec. 65 SURVEY Jasper COUNTY, ABSTRACT NO. 510

Acreage found 640 Patentee _____ Estimated by Chas. Hunt Date September 2, 1910

Timber Rights Expire _____ Mineral Rights Expire _____ H. O. Co. Represented by _____

Encroachments, Conflict, Trespass, Houses, Fences, Fields _____

Has Land Been Cut Over? Yes When 1-2 yrs. By Kirby Lumber Co. Class of Timber Cut Long Leaf Pine

Topography Flat with some marches Soil Sandy

Adaptable for Agriculture and Grazing Indications of _____

PINE REPRODUCTION

Area No.				
Acres	<u>640</u>			
L. L. Seedlings				
S. L. Seedlings				
L. L. 7"	<u>21M</u>			
L. L. 8" to 11"	<u>75M</u>			
S. L. 7"				
S. L. 8" to 11"				
Total Feet	<u>96M</u>			

MERCHANTABLE PINE (M. FEET) HERRING LOG SCALE—OUTSIDE BARK MEASUREMENT

AREA NO.	ACRES	LONG LEAF		SHORT LEAF		LOGS TO TREE	LOGS TO M.	TOTAL FEET
		12" to 16"	17" & UP	12" to 16"	17" & UP			
	<u>640</u>	<u>88M</u>	<u>50M</u>			<u>3</u>	<u>10</u>	<u>138,000</u>
Total Feet								

Growth Fair Quality Good, sound and smooth, medium length.

Isolated or Grouped Scattered Injury None

Jeopardized by _____ Preferred Method of Logging Tram and Carts.

HARDWOOD (M. FEET) SCRIBNER-DOYLE LOG SCALE—INSIDE BARK MEASUREMENT

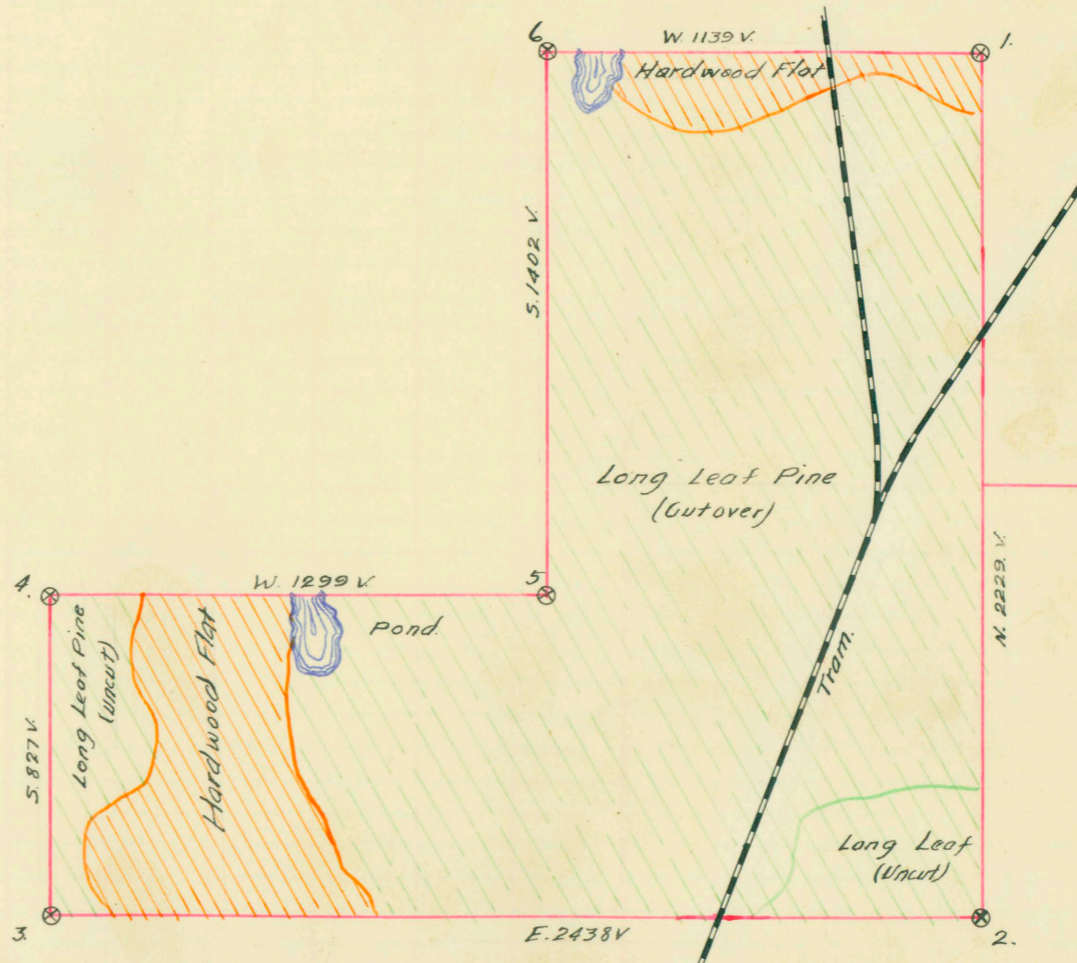
Method of Logging	AREA NO.	ACRES	TUPELO GUM	RED GUM		CYPRESS		WHITE OAK		RED OAK		HICK-ORY	ASH	BEECH	MAG-NOLIA	TOTAL		
				Ties	Feet	Ties	Feet	Ties	Feet	Ties	Feet					Feet	Ties	
Nearest Stream			<u>90M</u>														<u>90,000</u>	
Reproduction																		

Scattered

Revised Courses and Distances

BEARING TREES

1. Gum 12" S. 7V
2. Pine 10" W. 1V
3. Ash 11" S. 62° W. 1½V
4. B. Gum 14" S. 10° E. 4V
5. Pine 20" S. 30° W. 3½V
6. Pine 13" S. 88° W. 15V



ABSTRACT NO. 510

RECORD OF TIMBER CUTTING

DATE	PINE					HARDWOOD													
	LONG LEAF		SHORT LEAF		TIES	PILING	TUPELO GUM	RED GUM		CYPRESS		WHITE OAK		RED OAK		HICKORY	ASH	BEECH	MAGNOLIA
	12" to 16"	17" UP	16" By 17" UP	17" UP				Ties	Feet	Ties	Feet	Ties	Feet	Ties	Feet				
1910 Sept		117266	Completed																
Oct		122669	✓	✓															
Nov.		366504	✓	✓															
Dec.		5330	✓	✓															
Total		611769																	
1911 Jan.		1379	✓	✓															
		613148																	

Inspector W. L. Hawthorne's form S. I. 6-#225-
 Dated 12/27/12, reports this survey denuded of
 merchantable pine.