

H. O. CO. ACREAGE 80 SUB NO. G.L.Richardson SURVEY Jasper COUNTY, ABSTRACT NO. 642

Acreage found 80 Patentee..... Estimated by L. Q. Huey Date September 2, 1910  
 Timber Rights Expire..... Mineral Rights Expire..... H. O. Co. Represented by.....  
 Encroachments, Conflict, Trespass, Houses, Fences, Fields Trespass, Fence, Field.  
 Has Land Been Cut Over? Yes When 15-25 yrs. By Beaumont Lumber Co. Class of Timber Cut Long Leaf Pine  
 Topography Flat Soil Clay  
 Adaptable for Grazing and Agriculture Indications of.....

PINE REPRODUCTION				
Area No.				
Acres	<u>75</u>			
L. L. Seedlings				
S. L. Seedlings				
L. L. 7"	<u>1M</u>			
L. L. 8" to 11"	<u>4M</u>			
S. L. 7"				
S. L. 8" to 11"				
Total Feet	<u>5M</u>			

MERCHANTABLE PINE (M. FEET) HERRING LOG SCALE—OUTSIDE BARK MEASUREMENT								
AREA NO.	ACRES	LONG LEAF		SHORT LEAF		LOGS TO TREE	LOGS TO M.	TOTAL FEET
		12" to 16"	17" & Up	12" to 16"	17" & Up			
	<u>75</u>	<u>51M</u>	<u>38M</u>			<u>4</u>	<u>15</u>	<u>89,000</u>
Total Feet								

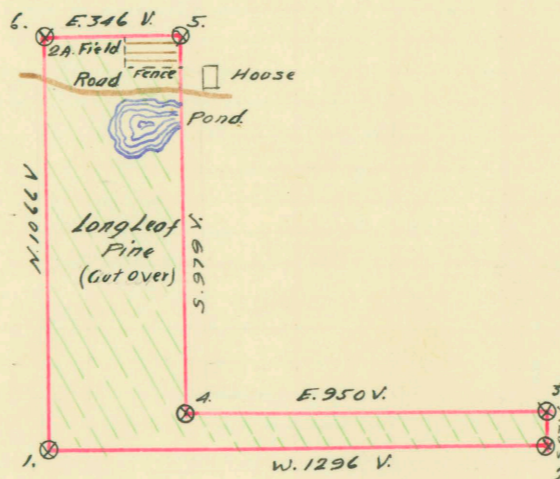
Growth Fair Quality Fair  
 Isolated or Grouped Scattered Injury None  
 Jeopardized by Fire Preferred Method of Logging Tram and Carts

Method of Logging	AREA NO.	ACRES	TUPELO GUM	RED GUM		CYPRESS		WHITE OAK		RED OAK		HICK-ORY	ASH	BEECH	MAG-NOLIA	TOTAL		
				Ties	Feet	Ties	Feet	Ties	Feet	Ties	Feet					Feet	Ties	
Nearest Stream																	<u>None</u>	
Reproduction																		

Revised Courses and Distances

BEARING TREES

1. Pine 11" N. 70° W. 15V
2. " 14" N. 40° W. 6V
3. " 16" S. 88° E. 9½V
4. Iron Stake
5. -
6. Pine Stump N. 55° E. 17V



ABSTRACT NO. 642

RECORD OF TIMBER CUTTING

DATE	PINE						HARDWOOD													
	LONG LEAF		SHORT LEAF		TIES	PILING	TUPELO GUM	RED GUM		CYPRESS		WHITE OAK		RED OAK		HICKORY	ASH	BEECH	MAGNOLIA	
	12" to 16"	17" Up	12" to 16"	17" Up				Ties	Feet	Ties	Feet	Ties	Feet	Ties	Feet					
1912 May. ✓		57585	Camp 3																	
June. ✓		12899	" "																	
Aug. ✓		83706	" "																	
		<u>148190</u>																		
Inspector W. L. Hawthorne's form S-D-6-#228 12/27/12 reports this survey denuded of merchantable pine.																				