

H. O. CO. ACREAGE 1280 SUB NO. H. Kempner SURVEY Jasper COUNTY, ABSTRACT NO. 673

Acreage found 1280-R/W Patentee _____ Estimated by F. E. Dionne and Earl Dionne Date August 22-23, 1910
 Timber Rights Expire _____ Mineral Rights Expire _____ H. O. Co. Represented by _____
 Encroachments, Conflict, Trespass, Houses, Fences, Fields Fence, House, Fields
 Has Land Been Cut Over? No When _____ By _____ Class of Timber Cut _____
 Topography Flat Soil Alluvial, Loam and Sand
 Adaptable for Agriculture, Grazing and Forestry Indications of _____

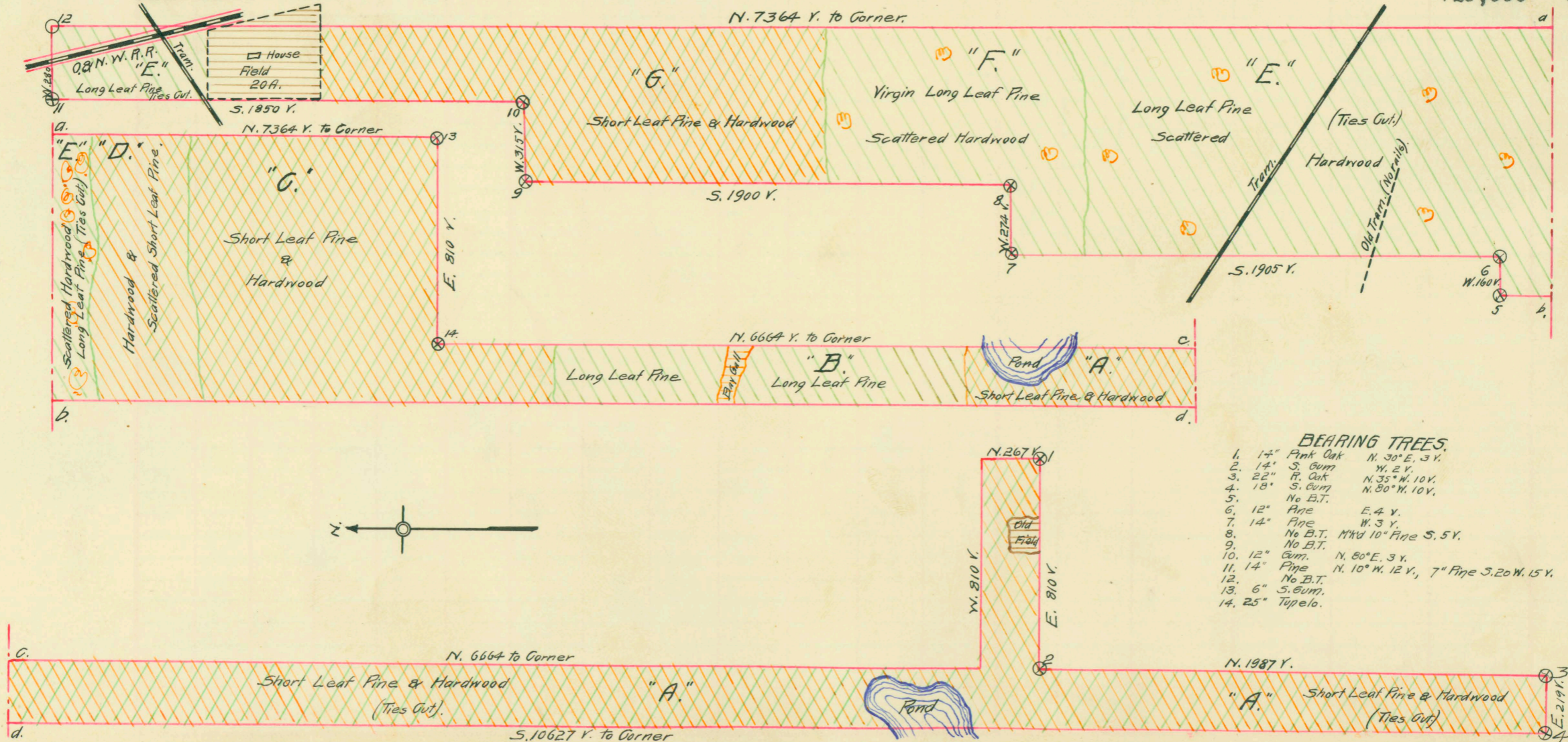
Area No.	PINE REPRODUCTION				
	A	B	C-D	E-F	G
Acres	305	62	260	466	167
L. L. Seedlings					
S. L. Seedlings					
L. L. 7"		2M		27M	
L. L. 8" to 11"		12M		140M	
S. L. 7"	18M		16M		6M
S. L. 8" to 11"	134M		92M		42M
Total Feet	152M	14M	108M	167M	48M

Area No.	ACRES	LONG LEAF		SHORT LEAF		LOGS TO TREE	LOGS TO M.	TOTAL FEET
		12" to 16"	17" & Up	12" to 16"	17" & Up			
A	305			1536	2343	3 1/2	10	3,879,000
B	62	454	675			3 1/2	10	1,129,000
C-D	260			502	486	3 1/2	12	988,000
E	350	123	409			3 1/2	12	532,000
F	116	509	941			3 1/2	12	1,450,000
G	167			224	246	3	14	470,000
Total Feet		1086	2025	2262	3075			8,448,000

Growth Vigorous Quality Good
 Isolated or Grouped Scattered Injury None
 Jeopardized by _____ Preferred Method of Logging Carts and Tram

Method of Logging	AREA NO.	ACRES	TUPELO GUM	RED GUM		CYPRESS		WHITE OAK		RED OAK		HICKORY	ASH	BEECH	MAGNOLIA	TOTAL		
				Ties	Feet	Ties	Feet	Ties	Feet	Ties	Feet					Feet	Ties	
Nearest Stream	ACG	662	111	2375	172			1416	175	3265	91	30		27			606,000	7,056
	B	62												13			13,000	
Reproduction	D	70	2	140	9			280	4					60			75,000	420
end	EF	466						712	6					26			32,000	712
																	726,000	8,188

Revised Courses and Distances



- BEARING TREES.**
1. 14" Pink Oak N. 30° E. 3 Y.
 2. 14" S. Gum W. 2 Y.
 3. 22" R. Oak N. 35° W. 10 Y.
 4. 18" S. Gum N. 80° W. 10 Y.
 5. No B.T.
 6. 12" Pine E. 4 Y.
 7. 14" Pine W. 3 Y.
 8. No B.T. MKD 10" Pine S. 5 Y.
 9. No B.T.
 10. 12" Gum N. 80° E. 3 Y.
 11. 14" Pine N. 10° W. 12 Y., 7" Pine S. 20 W. 15 Y.
 12. No B.T.
 13. 6" S. Gum.
 14. 25" Tupelo.

ABSTRACT NO. 673

RECORD OF TIMBER CUTTING

DATE	PINE					HARDWOOD													
	LONG LEAF		SHORT LEAF	TIES	PILING	TUPELO GUM	RED GUM		CYPRESS		WHITE OAK		RED OAK		HICKORY	ASH	BEECH	MAGNOLIA	
	12" to 16"	17" UP	12" to 16" Camp 3				Ties	Feet	Ties	Feet	Ties	Feet	Ties	Feet					Ties
1910 Nov.		61624																	
Dec.		466449	✓																
Total.		528073	✓																
1911 Jan.	✓	6483	✓																
Feb.	✓	227208	✓																
March	✓	401818	✓																
April	✓	134851	✓																
May	✓	1074	✓																
July	✓	31199	✓																
Aug.	✓	290169	✓																
Sept.	✓	308942	✓																
Oct.	✓	458974	✓																
Nov.	✓	387681	✓																
Dec.	✓	159914	✓																
		2930888																	
1912 Jan.	✓	89291	✓																
Feb.	✓	7698	✓																
March	✓	5395	✓																
June	✓	1382	✓																
		3034654																	

Inspector W. L. Hawthorn's form S. I. 6 - # 217
 12/6/12, reports this survey decided of pine 12"
 and up except 500,000 feet on 100 acres + 50,000 ft.
 on cut over area.