

H. O. CO. ACREAGE 160 SUB NO. R. C. Conn SURVEY Jasper COUNTY, ABSTRACT NO. 674

Acreage found 160 Patentee _____ Estimated by L. Q. Huey Date September 2, 1910
 Timber Rights Expire _____ Mineral Rights Expire _____ H. O. Co. Represented by _____
 Encroachments, Conflict, Trespass, Houses, Fences, Fields House, Fence and Fields
 Has Land Been Cut Over? Yes When 15-25 yrs. By Beaumont Lumber Co. Class of Timber Cut Long Leaf Pine
 Topography Flat Soil Clay
 Adaptable for Grazing and Agriculture Indications of _____

PINE REPRODUCTION			
Area No.	A	B	
Acres	135	20	
L. L. Seedlings			
S. L. Seedlings			
L. L. 7"	1M		
L. L. 8" to 11"	3M		
S. L. 7"			
S. L. 8" to 11"		1M	
Total Feet	4M	1M	

MERCHANTABLE PINE (M. FEET) HERRING LOG SCALE—OUTSIDE BARK MEASUREMENT								
AREA NO.	ACRES	LONG LEAF		SHORT LEAF		LOGS TO TREE	LOGS TO M.	TOTAL FEET
		12" to 16"	17" & Up	12" to 16"	17" & Up			
A	135	370	317					687,000
B	20			42	34			76,000
Total Feet								763,000

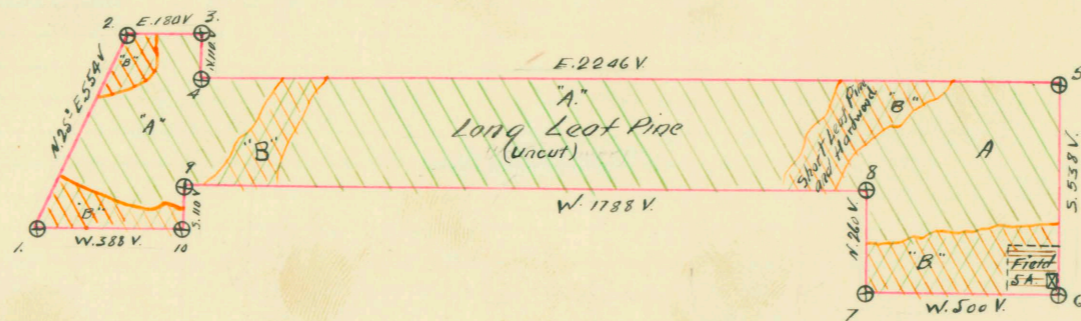
Growth Fair Quality Fairly sound, smooth and of fair length.
 Isolated or Grouped Scattered Injury None
 Jeopardized by _____ Preferred Method of Logging Tram and Carts

Method of Logging	HARDWOOD (M. FEET) SCRIBNER-DOYLE LOG SCALE—INSIDE BARK MEASUREMENT																
	AREA NO.	ACRES	TUPELO GUM	RED GUM		CYPRESS		WHITE OAK		RED OAK		HICK-ORY	ASH	BEECH	MAG-NOLIA	TOTAL	
				Ties	Feet	Ties	Feet	Ties	Feet	Ties	Feet					Feet	Ties
Nearest Stream	B	20		90				60		210							360
Reproduction																	

Revised Courses and Distances

BEARING TREES

1. Pine 12" N. 65° E. 14V
2. Post Oak N. 45° E. 3½V
3. Pine 21" S. 45° W. 8V
4. " 18" S. 45° W. 8V
5. " 16" N. 20V
6. " 10" S. 10° E. 6V
7. Bay 12" N. 80° W. 6V
8. Pine 14" N. 80° W. 10V
9. " 11" N. 70° W. 15V
10. Ash 20" N. 46° E. 10V



ABSTRACT NO. 674

RECORD OF TIMBER CUTTING

DATE	PINE						HARDWOOD												
	LONG LEAF		SHORT LEAF		TIES	PILING	TUPELO GUM	RED GUM		CYPRESS		WHITE OAK		RED OAK		HICKORY	ASH	BEECH	MAGNOLIA
	12" TO 16"	17" UP	12" TO 16"	17" UP				Ties	Feet	Ties	Feet	Ties	Feet	Ties	Feet				
1912 April ✓		234108	Camp 3																
May ✓		239274	✓	✓															
June ✓		35868	✓	✓															
Aug. ✓		67080	✓	✓															
Sept. ✓		8833	✓	✓															
		585163																	

Inspector W. L. Hawthorne's form S.D. 6-#210
 Dated, 12/5/12, reports this survey denuded of pine
 12" and up.