

H. O. CO. ACREAGE 480 SUB NO. H. & T. C. R. R. Sec. 248 SURVEY Jasper COUNTY, ABSTRACT NO. 713

Acres found 475 - R/W Patentee Estimated by W. S. Byrd Date September 21, 1910
 Timber Rights Expire Mineral Rights Expire H. O. Co. Represented by
 Encroachments, Conflict, Trespass, Houses, Fences, Fields Conflict
 Has Land Been Cut Over? Yes When 20 yrs. By Class of Timber Cut
 Topography Rolling Soil Sand
 Adaptable for Agriculture Indications of

PINE REPRODUCTION

Area No.	A			
Acres	430			
L. L. Seedlings				
S. L. Seedlings				
L. L. 7"	25M			
L. L. 8" to 11"	157M			
S. L. 7"				
S. L. 8" to 11"				
Total Feet	182M			

MERCHANTABLE PINE (M. FEET) HERRING LOG SCALE—OUTSIDE BARK MEASUREMENT

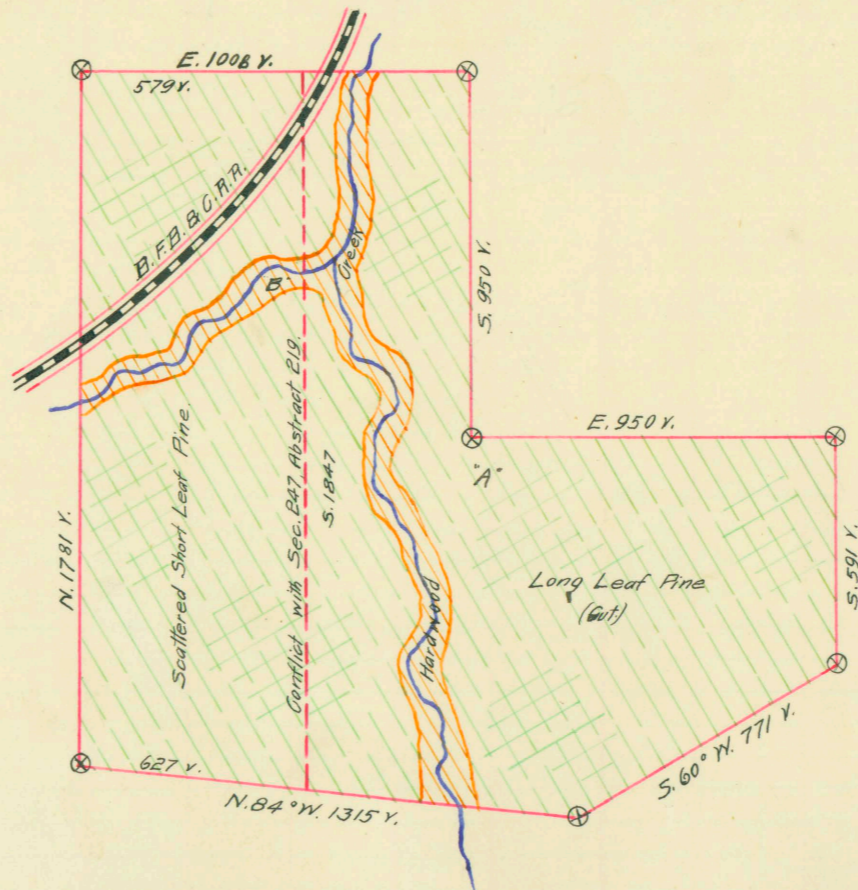
AREA NO.	ACRES	LONG LEAF		SHORT LEAF		LOGS TO TREE	LOGS TO M.	TOTAL FEET
		12" to 16"	17" & UP	12" to 16"	17" & UP			
A	430	727	3148			3½	9½	3,875,000
A	430			19	215	3½	10	234,000
Total Feet								4,109,000

Growth Scattered Quality Sound and medium length
 Isolated or Grouped Scattered Injury None
 Jeopardized by Preferred Method of Logging Railroad and Steam Skidder

HARDWOOD (M. FEET) SCRIBNER-DOYLE LOG SCALE—INSIDE BARK MEASUREMENT

Method of Logging	AREA NO.	ACRES	TUPELO GUM	RED GUM		CYPRESS		WHITE OAK		RED OAK		HICK-ORY	ASH	BEECH	MAG-NOLIA	TOTAL		
				Ties	Feet	Ties	Feet	Ties	Feet	Ties	Feet					Feet	Ties	
Nearest Stream	B	45		875	25			1400	35	500							60,000	2,775
Reproduction	None																	

Revised Courses and Distances



ABSTRACT NO. 713

RECORD OF TIMBER CUTTING

DATE	PINE						HARDWOOD													
	LONG LEAF		SHORT LEAF		TIES	PILING	TUPELO GUM	RED GUM		CYPRESS		WHITE OAK		RED OAK		HICK-ORY	ASH	BEECH	MAG-NOLIA	
	12" to 16"	17" UP	12" to 16"	17" UP				Ties	Feet	Ties	Feet	Ties	Feet	Ties	Feet					
1915 March April May June		130832 1080177 982317 7264 2700590	Camp Aldridge " " "																	
<p><i>N. L. Hawthorne in his S. I. - 6 - # 364 dated 10/11/15 reports this survey denuded of merchantable Pine timber except 12,000 feet in isolated sound trees and 20,000 ft. in unsound and defective trees.</i></p>																				