

H. O. CO. ACREAGE 640 - R/W SUB NO. H. & T.C.R.R. Sec. 164 SURVEY Jasper COUNTY, ABSTRACT NO. 895

Acres found 640 - R/W Patentee Estimated by D. P. Valley Date August 25, 1910
 Timber Rights Expire Mineral Rights Expire H. O. Co. Represented by
 Encroachments, Conflict, Trespass, Houses, Fences, Fields Fences, Fields
 Has Land Been Cut Over? Partly When 1909 By Kirby Lumber Co. Class of Timber Cut Trees suitable for Piling
 Topography Part Rolling and part Flat Soil Sand and Clay
 Adaptable for Agriculture and Grazing Indications of

PINE REPRODUCTION

Area No.	A-B			
Acres	580			
L. L. Seedlings				
S. L. Seedlings				
L. L. 7"	12M			
L. L. 8" to 11"	65M			
S. L. 7"				
S. L. 8" to 11"				
Total Feet	77M			

MERCHANTABLE PINE (M. FEET) HERRING LOG SCALE—OUTSIDE BARK MEASUREMENT

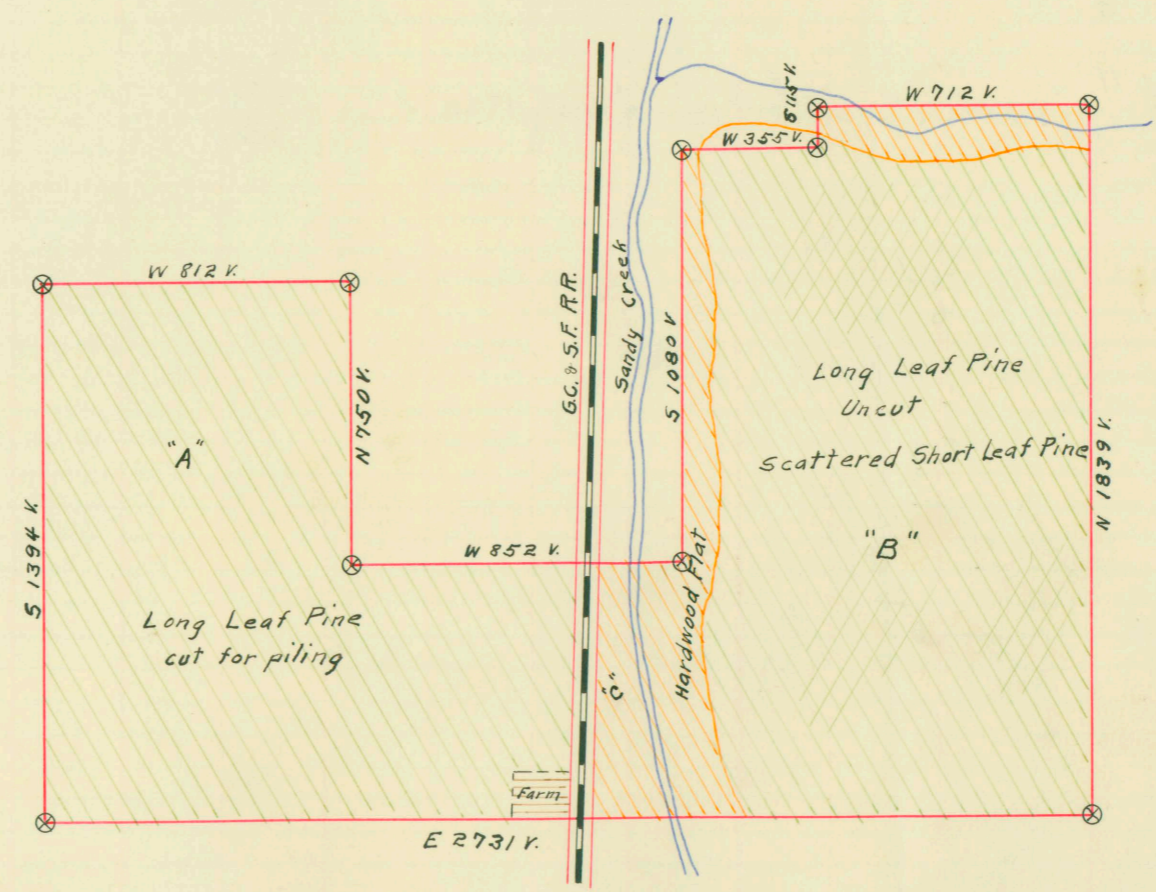
AREA NO.	ACRES	LONG LEAF		SHORT LEAF		LOGS TO TREE	LOGS TO M.	TOTAL FEET
		12" to 16"	17" & UP	12" to 16"	17" & UP			
A-B	580	943	6606			3 1/2-4	7-9	7,549,000
				40	207	3 1/2-4	7-9	247,000
Total Feet								7,796,000

Growth Vigorous Quality Sound, smooth and good length of body
 Isolated or Grouped Scattered Injury Worms showing where piling was cut
 Jeopardized by Preferred Method of Logging

HARDWOOD (M. FEET) SCRIBNER-DOYLE LOG SCALE—INSIDE BARK MEASUREMENT

Method of Logging	AREA NO.	ACRES	TUPELO GUM	RED GUM		CYPRESS		WHITE OAK		RED OAK		HICK-ORY	ASH	BEECH	MAG-NOLIA	TOTAL	
				Ties	Feet	Ties	Feet	Ties	Feet	Ties	Feet					Feet	Ties
Nearest Stream	C	60		400	125			1000	75	750	75	15		15	10	315,000	2,150
Reproduction																	

Revised Courses and Distances



ABSTRACT NO. 895

RECORD OF TIMBER CUTTING

DATE	PINE					HARDWOOD													
	LONG LEAF		SHORT LEAF		TIES	PILING	TUPELO GUM	RED GUM		CYPRESS		WHITE OAK		RED OAK		HICK-ORY	ASH	BEECH	MAG-NOLIA
	12" TO 16"	17" UP	12" TO 16"	17" UP				Ties	Feet	Ties	Feet	Ties	Feet	Ties	Feet				
1918 Nov.		200739																	
1916 June		16400																	
1919 May		217139																	
1920 April		64820																	
"	Bridgman	7161699																	
"		51420																	
"		27330																	
May		902444																	
"	waste	14491																	
June		349631																	
"	waste	811																	
"		22033																	
Aug.	piling	15698																	
"		23703																	
	Sub Total	2347177																	
Sept.		1345990																	
"	piling	5920																	
October		1407998																	
"		30414																	
"	waste	4626																	
November		38817																	
"	waste	6897																	
"		14665																	
December		5201404																	
"		94781																	
"		3360																	
1921 Jan.		441850																	
"		15578																	
Feb.		288532																	
March	waste	3651																	
		6049556																	

cut by Piling Camp.

Sillican-Chipley Co.

western Naval Stores Co.

used in constructing mainline draw road

Less 28,879 feet error made in turpentine timber on Sept. 1920 stampage bill and corrected on Oct. bill.

western Naval Stores Co. during May, 1920.