

H. O. CO. ACREAGE 640 SUB NO. H. & T.C.R.R. Sec. 88 SURVEY Jasper COUNTY, ABSTRACT NO. 901

Acres found 640 - R/W Patentee \_\_\_\_\_ Estimated by Geo. Jordan Date August 29, 1910  
 Timber Rights Expire \_\_\_\_\_ Mineral Rights Expire \_\_\_\_\_ H. O. Co. Represented by \_\_\_\_\_  
 Encroachments, Conflict, Trespass, Houses, Fences, Fields No  
 Has Land Been Cut Over? Partly When 2-10 yrs. By Kirby Lumber Co. Class of Timber Cut Long Leaf Pine  
 Topography Rolling Soil Sandy  
 Adaptable for Agriculture and Grazing Indications of \_\_\_\_\_

| PINE REPRODUCTION |     |     |      |
|-------------------|-----|-----|------|
| Area No.          | A   | B   | C    |
| Acres             | 25  | 140 | 455  |
| L. L. Seedlings   |     |     |      |
| S. L. Seedlings   |     |     |      |
| L. L. 7"          |     | 4M  | 23M  |
| L. L. 8" to 11"   |     | 27M | 128M |
| S. L. 7"          | 2M  |     |      |
| S. L. 8" to 11"   | 9M  |     |      |
| Total Feet        | 11M | 31M | 151M |

| MERCHANTABLE PINE (M. FEET) HERRING LOG SCALE—OUTSIDE BARK MEASUREMENT |       |            |          |            |          |              |            |            |
|--|-------|------------|----------|------------|----------|--------------|------------|------------|
| AREA NO.   | ACRES | LONG LEAF  |          | SHORT LEAF |          | LOGS TO TREE | LOGS TO M. | TOTAL FEET |
|  |       | 12" to 16" | 17" & Up | 12" to 16" | 17" & Up |              |            |            |
| A  | 25    |            |          | 60M        | 44M      | 3½           | 16         | 104,000    |
| B  | 140   | 461M       | 3120M    |            |          | 4            | 8          | 3,581,000  |
| C  | 455   | 144M       |          |            |          |              |            | 144,000    |
| Total Feet   |       | 605M       |          |            |          |              |            | 3,829,000  |

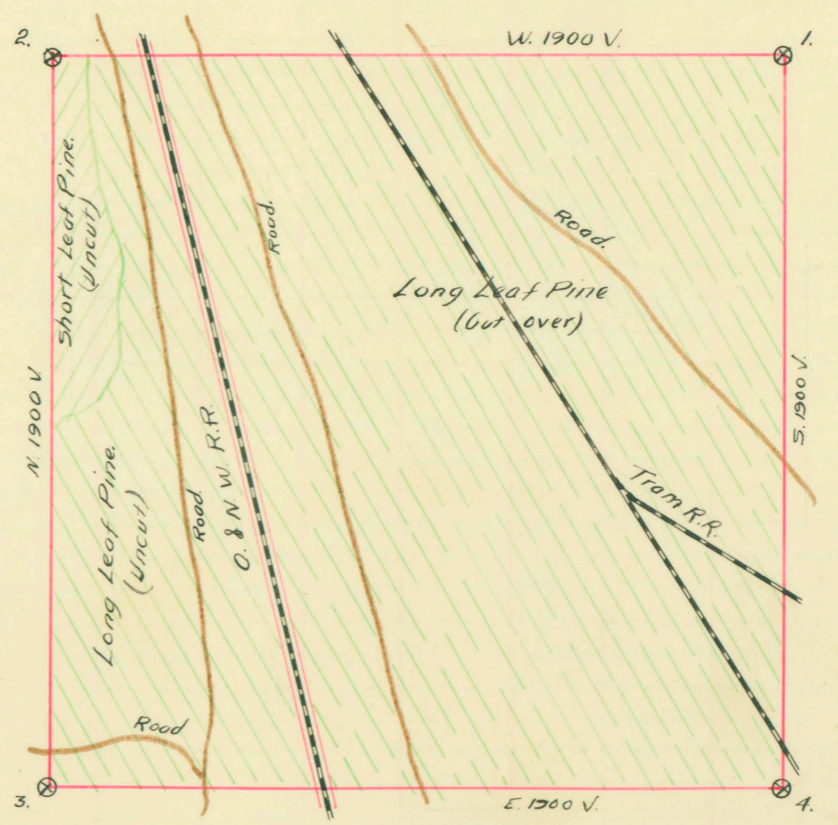
Growth Vigorous Quality Fairly sound and smooth, good length.  
 Isolated or Grouped Scattered Injury Slight by insects in big Long Leaf Pine.  
 Jeopardized by \_\_\_\_\_ Preferred Method of Logging Tram and Carts

| Method of Logging | AREA NO. | ACRES | TUPELO GUM | RED GUM |      | CYPRESS |      | WHITE OAK |      | RED OAK |      | HICK-ORY | ASH | BEECH | MAG-NOLIA | TOTAL |      |
|-------------------|----------|-------|------------|---------|------|---------|------|-----------|------|---------|------|----------|-----|-------|-----------|-------|------|
|                   |          |       |            | Ties    | Feet | Ties    | Feet | Ties      | Feet | Ties    | Feet |          |     |       |           | Feet  | Ties |
|                   |          |       |            | None    |      |         |      |           |      |         |      |          |     |       |           |       |      |
| Nearest Stream    |          |       |            |         |      |         |      |           |      |         |      |          |     |       |           |       |      |
| Reproduction      |          |       |            |         |      |         |      |           |      |         |      |          |     |       |           |       |      |

Revised Courses and Distances

BEARING TREES

1. Pine 8" N. 89° W. 11V
2. R.Oak 14" S. 67° E. 8V
3. Pine 21" N. 45° E. 2½V
4. " 12" N. 42° W. 21V



ABSTRACT NO. 901

RECORD OF TIMBER CUTTING

| DATE      | PINE       |         |            |      |        | HARDWOOD   |         |      |         |      |           |      |         |      |         |     |       |          |      |
|-----------|------------|---------|------------|------|--------|------------|---------|------|---------|------|-----------|------|---------|------|---------|-----|-------|----------|------|
|           | LONG LEAF  |         | SHORT LEAF | TIES | PILING | TUPELO GUM | RED GUM |      | CYPRESS |      | WHITE OAK |      | RED OAK |      | HICKORY | ASH | BEECH | MAGNOLIA |      |
|           | 12" to 16" | 17" UP  | 18" UP     |      |        |            | Ties    | Feet | Ties    | Feet | Ties      | Feet | Ties    | Feet |         |     |       |          | Ties |
| 1910 Nov. |            | 1367694 | Comp 3     |      |        |            |         |      |         |      |           |      |         |      |         |     |       |          |      |
| Dec.      |            | 407366  | ✓          |      |        |            |         |      |         |      |           |      |         |      |         |     |       |          |      |
| Total     |            | 1775060 | ✓          |      |        |            |         |      |         |      |           |      |         |      |         |     |       |          |      |
| 1911 Jan. |            | 242     | ✓          |      |        |            |         |      |         |      |           |      |         |      |         |     |       |          |      |
|           |            | 1775302 | ✓          |      |        |            |         |      |         |      |           |      |         |      |         |     |       |          |      |

See form S.D. 6-# 87, Dated 3/25/12 signed by  
by W.C. DuBose reporting this survey demurred.