

H. O. CO. ACREAGE 640 SUB NO. H. & T. C. R. R. Sec. 208 SURVEY Jasper COUNTY, ABSTRACT NO. 919

Acreage found 663.7 Patentee Estimated by Boyd Byrd Date August 27, 1910  
 Timber Rights Expire Mineral Rights Expire H. O. Co. Represented by  
 Encroachments, Conflict, Trespass, Houses, Fences, Fields Trespass, Houses, Fences, Fields  
 Has Land Been Cut Over? Partly When 10 yrs. By Class of Timber Cut Long Leaf Pine  
 Topography Rolling Soil Sand  
 Adaptable for Grazing Indications of

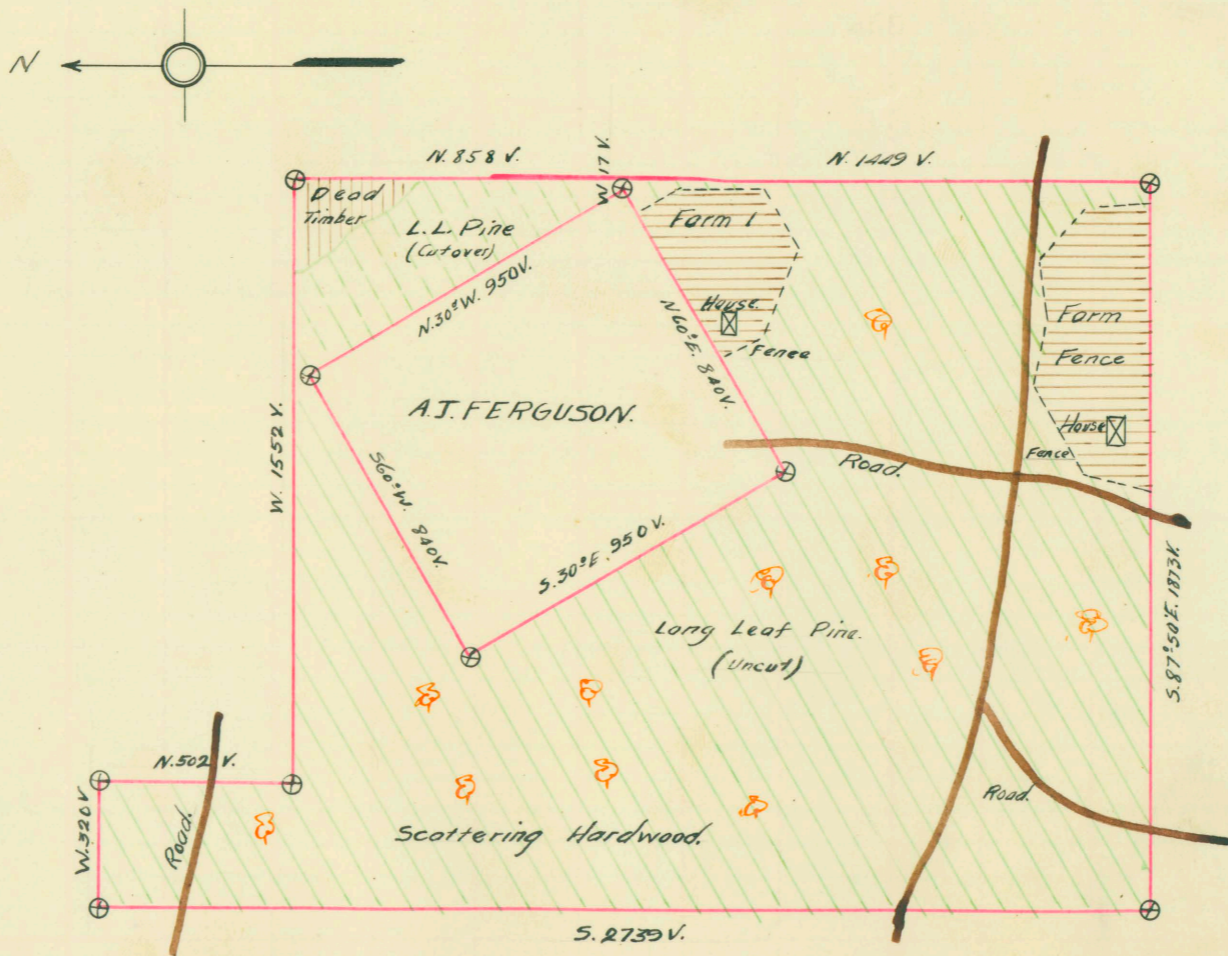
PINE REPRODUCTION				
Area No.				
Acres	630			
L. L. Seedlings				
S. L. Seedlings				
L. L. 7"	8M			
L. L. 8" to 11"	54M			
S. L. 7"				
S. L. 8" to 11"				
Total Feet	62M			

MERCHANTABLE PINE (M. FEET) HERRING LOG SCALE—OUTSIDE BARK MEASUREMENT								
AREA NO.	ACRES	LONG LEAF		SHORT LEAF		LOGS TO TREE	LOGS TO M.	TOTAL FEET
		12" to 16"	17" & UP	12" to 10"	17" & UP			
	630	426	8175			3	10	8,601,000
Total Feet								

Growth Vigorous Quality Sound and smooth, long bodied  
 Isolated or Grouped Scattered Injury None  
 Jeopardized by Preferred Method of Logging Railroad

Method of Logging With Pine	AREA NO.	ACRES	TUPELO GUM	RED GUM		CYPRESS		WHITE OAK		RED OAK		HICK-ORY	ASH	BEECH	MAG-NOLIA	TOTAL		
				Ties	Feet	Ties	Feet	Ties	Feet	Ties	Feet					Feet	Ties	
Nearest Stream		630								250	15	15					30,000	250
Reproduction No																		

Revised Courses and Distances





ABSTRACT NO. 919

RECORD OF TIMBER CUTTING

DATE	PINE						HARDWOOD													
	LONG LEAF		SHORT LEAF		TIES	PILING	TUPELO GUM	RED GUM		CYPRESS		WHITE OAK		RED OAK		HICKORY	ASH	BEECH	MAGNOLIA	
	12" to 16"	17" UP	12" to 16"	17" UP				Ties	Feet	Ties	Feet	Ties	Feet	Ties	Feet					
1918 January		331,670																		
" February		1197,101																		
" March		29,318																		
" May		409839																		
" June		1,109,510																		
" July		411037																		
" "	waste	1175,340																		
" August		2,566																		
" "	waste	5287983																		
" "		400,1690																		
" "	waste	1103																		
		5,689,776																		

Camp Jago (Boulger Co.)

Turpentine

(Gilmer Co. Ga.)

W.L. Hawthorn on Form 896 no. 562 dated Nov. 11, 1918, reports this survey denuded of Pine