

H. O. CO. ACREAGE 160, E. 1/2 of NE. 1/4, NW. 1/4 of NE. 1/4, NE. 1/4 of SE. 1/4, SEC. 24 T. 6 S., R. 13 W., CALCASIEU PARISH.

Acreage found 160 Patentee \_\_\_\_\_ Estimated by Max Jasspon Date December 15, 1910  
 Timber Rights Expire \_\_\_\_\_ Mineral Rights Expire \_\_\_\_\_ H. O. Co. Represented by \_\_\_\_\_  
 Encroachments, Conflict, Trespass, Houses, Fences, Fields Field and fence  
 Has Land Been Cut Over? NO When \_\_\_\_\_ By \_\_\_\_\_ Class of Timber Cut \_\_\_\_\_  
 Topography Flat Soil Sand and Clay  
 Adaptable for Good Agriculture Indications of \_\_\_\_\_

**PINE REPRODUCTION**

Area No.				
Acres	<u>160</u>			
L. L. Seedlings				
S. L. Seedlings				
L. L. 7"	<u>4M</u>			
L. L. 8" to 11"	<u>32M</u>			
S. L. 7"				
S. L. 8" to 11"				
Total Feet	<u>36M</u>			

**MERCHANTABLE PINE (M. FEET) HERRING LOG SCALE—OUTSIDE BARK MEASUREMENT**

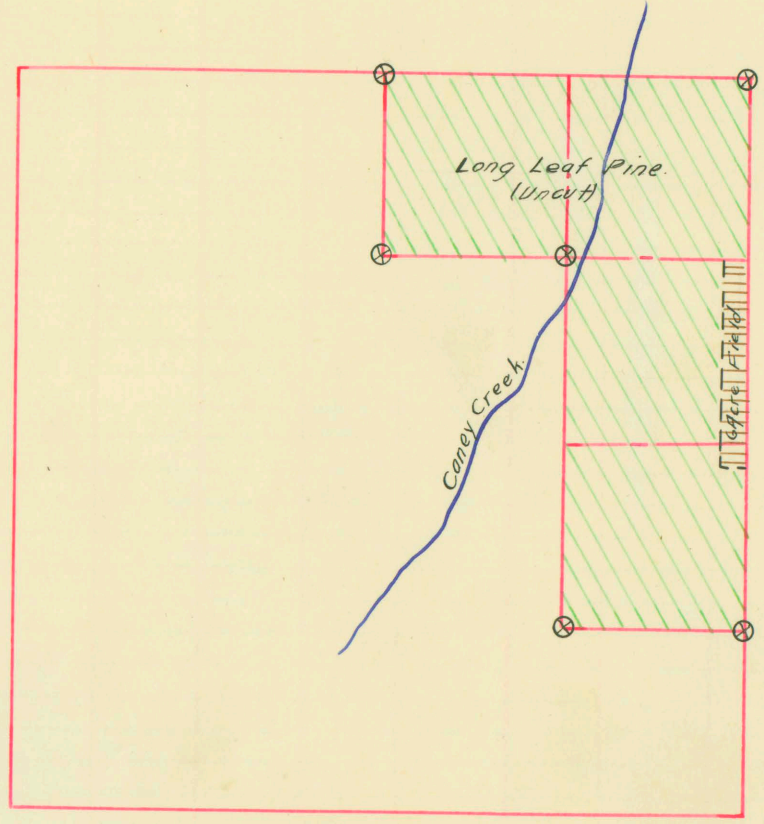
AREA NO.	ACRES	LONG LEAF		SHORT LEAF		LOGS TO TREE	LOGS TO M.	TOTAL FEET
		12" To 16"	17" & UP	12" To 16"	17" & UP			
	<u>160</u>	<u>905</u>	<u>1899</u>			<u>3 1/2</u>	<u>12</u>	<u>2,804,000</u>
Total Feet								

Growth Vigorous Quality Good and sound  
 Isolated or Grouped Scattered Injury None  
 Jeopardized by \_\_\_\_\_ Preferred Method of Logging Railroad and teams

**HARDWOOD (M. FEET) SCRIBNER-DOYLE LOG SCALE—INSIDE BARK MEASUREMENT**

Method of Logging	AREA NO.	ACRES	TUPELO GUM	RED GUM		CYPRESS		WHITE OAK		RED OAK		HICK-ORY	ASH	BEECH	MAG-NOLIA	TOTAL		
				Ties	Feet	Ties	Feet	Ties	Feet	Ties	Feet					Feet	Ties	
Nearest Stream																	<u>None</u>	
Reproduction																		

Revised Courses and Distances



su  
vult.

# RECORD OF TIMBER CUTTING

DATE	PINE						HARDWOOD												
	LONG LEAF		SHORT LEAF		TIES	PILING	TUPELO GUM	RED GUM		CYPRESS		WHITE OAK		RED OAK		HICKORY	ASH	BEECH	MAGNOLIA
	12" to 16"	17" Up	12" to 16"	17" Up				Ties	Feet	Ties	Feet	Ties	Feet	Ties	Feet				
1916 Apr. May June July		787867 1459861 211041 9011 2466784	Camp	Fields				W.L. Hawthorn's S.L. 6 Form #482, dated 5/4/17 reports this survey denuded of merchantable Pine.											

filed under heading camp fields,