



*Published monthly to advance and promote friendly service with the customers of The Lufkin Foundry & Machine Co., Lufkin, Texas*

Vol. 7

June, 1928

No. 3



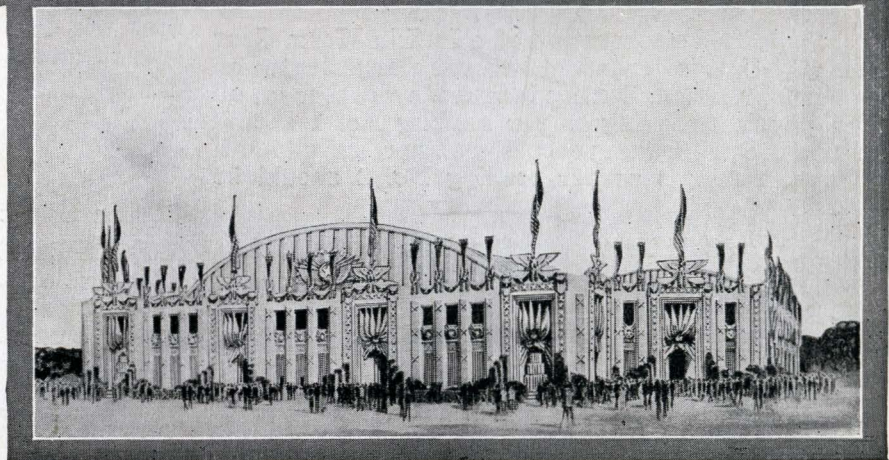
*HOUSTON—The Convention City*

## National Democratic Convention

June 26, 1928

**JESSE H. JONES**—Our Lumberman Friend Who Put the Money on the "Barrel Head," and Presidential possibility.

**R. S. STERLING**—Who successfully managed the campaign for the funds to entertain the convention.



New \$100,000.00 Courtesy Hall, Seating 25,000

## Lieut. Alford J. Williams Flies 322.55 Miles Per Hour In Especially Designed Plane

Reproduced below is the plane in which Lieut. Alford J. Williams of the United States Navy recently flew 322.55 miles per hour. This ship was designed and built by the Kirkham Aircraft Corporation of New York and is powered by a Packard "X" motor of the following specifications: 24-cylinder "X" (known as "X" account of its peculiar shape) water cooled type.

Cubic displacement 2,775 cubic inches (about 16 times the average 6-cylinder motor car of today.)

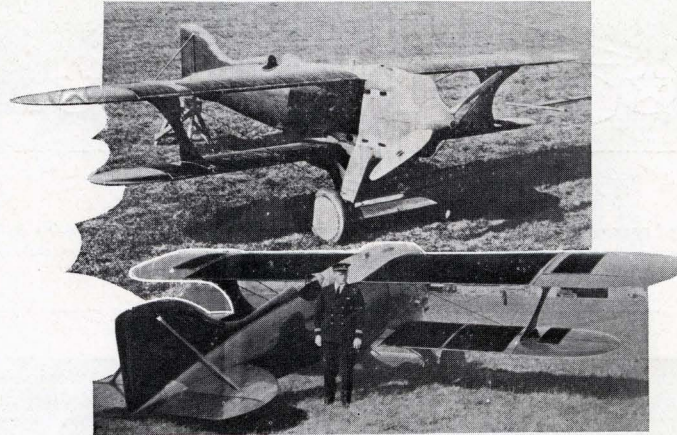
Number of spark plugs 48, Magneto's 4, carburetors 4, valves 96.

Horsepower 1,375 (estimated) revolutions per minute 2,600, full throttle.

Oil pressure 80 to 100 pounds; Weight 1,580 pounds (estimated).

The pictures reproduced were taken immediately after the speed flight. It is interesting to note that only two such motors have been built and they are the only two of their type to fly successfully.

We are informed that Lieut. Williams takes up brand-new airplanes for safety and speed tests. Every flight a first flight—some business.



Lieut. Alford J. Williams and especially designed plane in which he flew 322.55 miles per hour.

## A. M. Bowman Elected President of Purchasers

A. M. Bowman, general purchasing agent of the Humble Oil and Refining Company since 1920, was elected president of the National Purchasing Agents Association at their convention in Kansas City last week. Mr. Bowman had just completed his term of office as a national vice president and was elected without opposition.

Coming to Texas from Toledo in 1907 as purchasing agent for the Gulf Company, Mr. Bowman later became president of the Southern Well Works. Still later he became purchasing agent for the Republic Production Company. Since his association with the Humble Company he has been active in American Petroleum Institute affairs, serving on the

rotary drilling equipment committee and at present is national secretary of the standard rig and derrick committee.

*Industry, Economy, Honesty and Kindness form a quartette of virtues that will never be improved upon.*  
—James Oliver.

### Honesty

If you doubt that honesty is the best policy take a lesson from the man who stole a dog and tried unsuccessfully for two days to sell it for three dollars. Discouraged at last in his attempts to find a buyer who would offer him more than two dollars, the thief took the dog back to the lady who owned him and was rewarded for his honesty with a five dollar bill.

Under light loads the oil temperature is considerably lower.

The following quantities of oil are required in Lufkin Units:

Baby Unit.....	7 Gallons
Standard .....	22 "
Intermediate .....	35 "
Heavy Duty.....	42 "
Pumping Power.....	45 "

The quantity of oil in a unit should be watched very closely, as too much oil decreases the efficiency of the unit as well as making oil slop out on the unit.

## Lubrication of Lufkin Units

The efficient operation of a Lufkin Worm Gear Pumping Unit is dependent in a very large degree on proper lubrication. During temperate weather an oil with physical reading as per reading No. 1 should be used. During severe cold weather an oil with physical readings as per reading No. 2 should be used.

Reading	Cold Test	Staybolt Viscosity At		
		100°F.	140°F.	210°F.
1	40°F.	2000°F.	576°F.	140°F.
2	10°F.	1075°F.	290°F.	74°F.

The nature of the worm gear demands the use of a very viscous or "tacky" lubricant. When the unit operates under a heavy load the oil gets very warm and reaches a temperature of about 160°F.

THE LUFKIN LINE



*Through  
Lens  
and  
Shutter*

Upper Left— DOG DR.

Dr. Buck awaiting the crisis. If the poodle had been a pom, poke, or chow, it would have been something fancy like appendicitis. But it's only distemper.

Center— COP AND BEAUTY

BALBOA, Cal.—A lucky cop, Frank Truman, with a yardstick instead of a "billy" measuring "Miss Balboa," or Joan Fairchild. The law here says that 10 inches is the limit between the bathing suit and the knee.

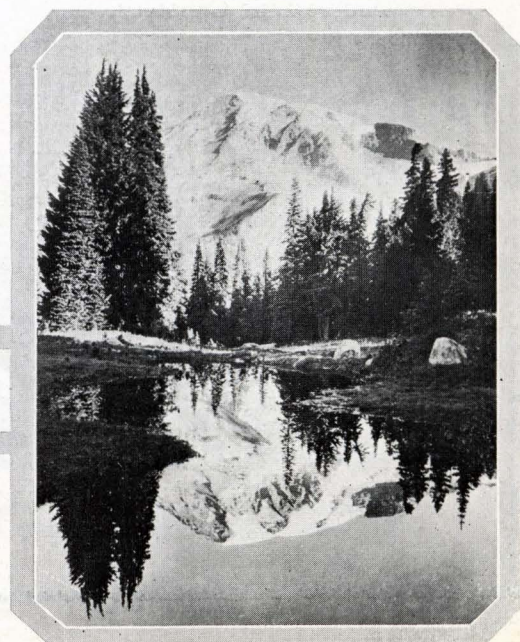
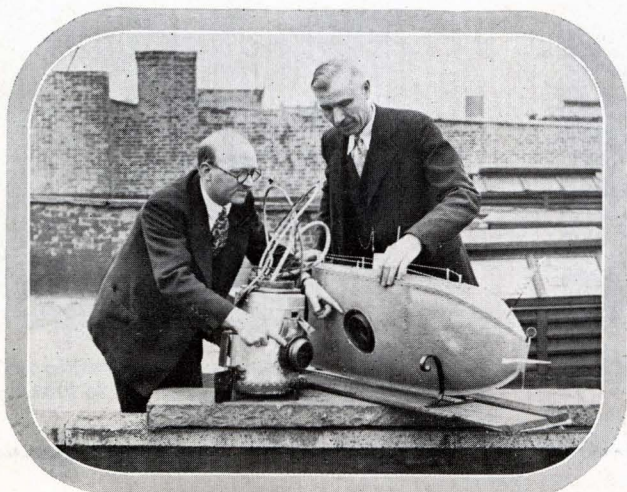


Lower Left— SUBMARINE SAFETY

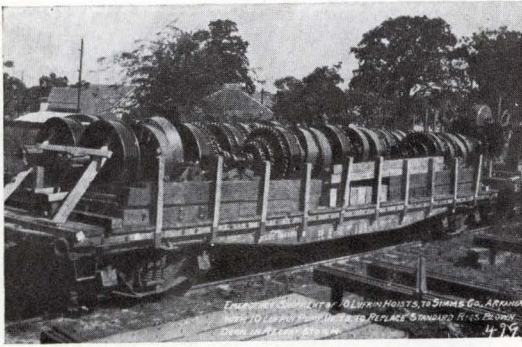
NEW YORK—Desco Fischer (left) and John Kardos with their new invention for saving the lives of those trapped in sunken submarines. The device is a large diving bell, 6 feet in diameter, the side entrance to which screws into a special port hole to be built in submarines. From 6 to 10 men can then go from the submarine to the bell and be raised to the surface. The bell is then lowered again until all are saved.

Lower Right— FAIRY LAKE

Fairy Lake in Paradise Valley—a scene which justifies the flattering names which have been applied to it. Turn the picture upside down—it's as clear each way.



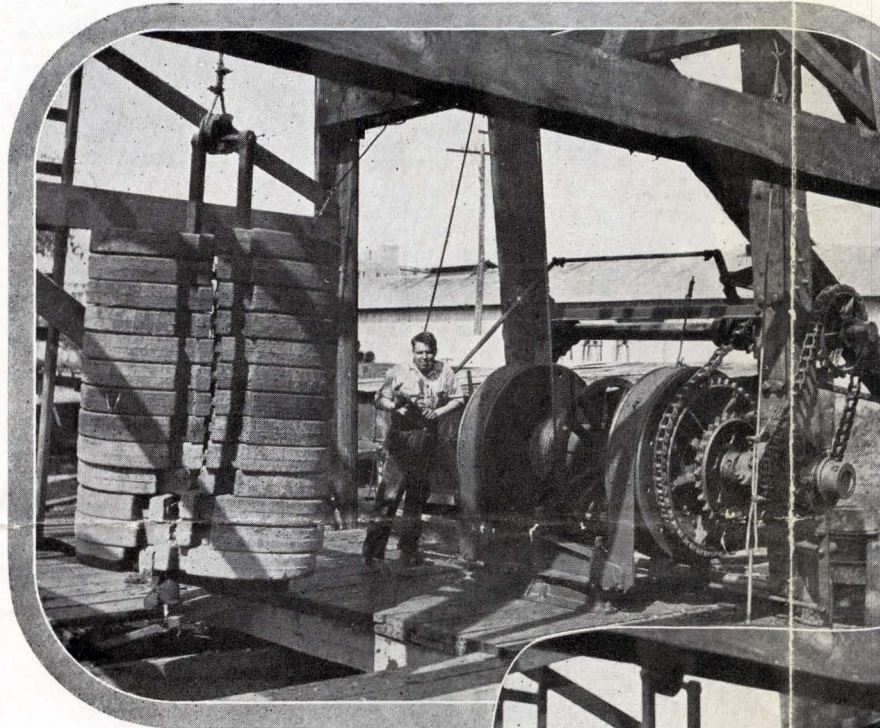
# Lufkin Hoists



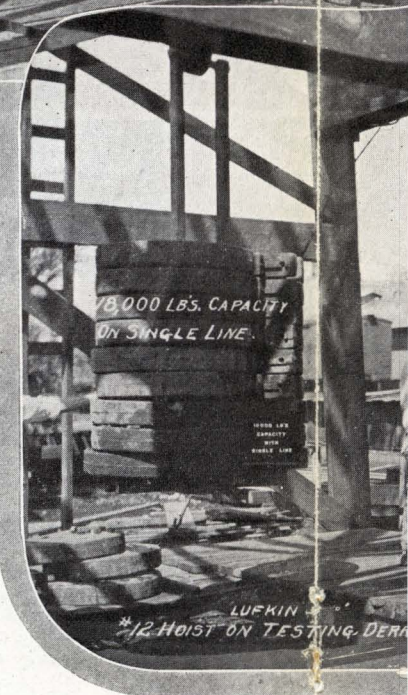
Carload of Lufkin Hoists enroute to Simms Oil Company to replace Standard Rigs blown to pieces in recent Arkansas storm.

## All Improved Lufkin Hoists Have---

- Double Brake Bands.
- Expansion Brake Drums.
- Roller Bearings in Drums.
- Alemite Lubrication.
- Improved Brake Rigging.
- All Sprockets A. P. I. No. 3 and 4 Chains.
- Asbestos Friction Block Clutches.
- J. M. Asbestos Brake Linings.
- Heavy Construction.
- Ample Line Capacity.



No. 14 Lufkin Hoist handling 26,000 lbs. on single line with ease. Note equalizer on brake bands.

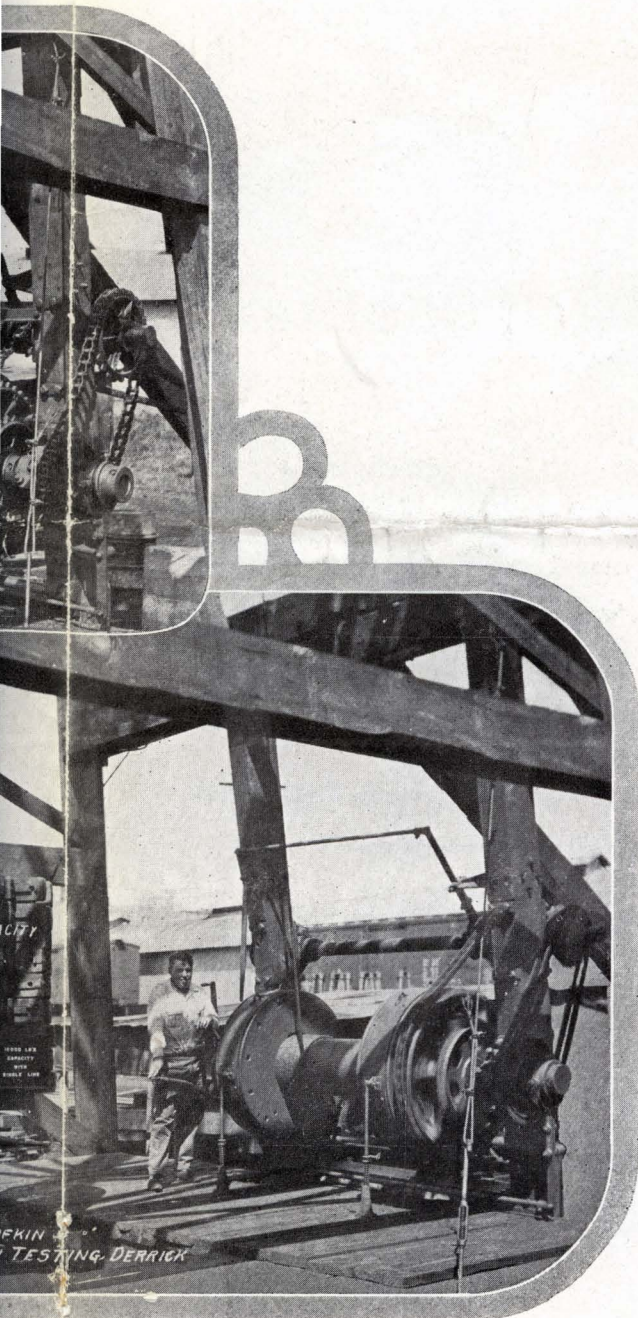


No. 12 Lufkin Hoist. Test shows 18,000 lbs. can be handled as easily. Note the o



Can't be otherwise.  
Lufkin Hoists are correct.

# Improved Hoists



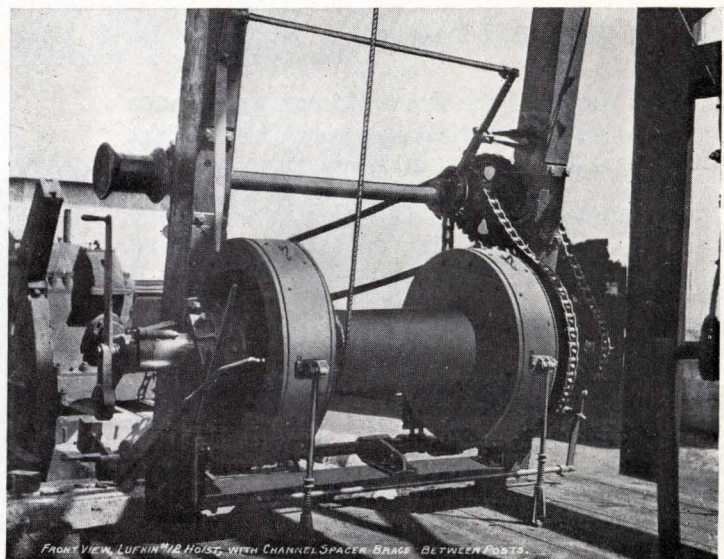
shows 18,000 lbs. being handled with single line. 25,000 lbs. capacity. Note the operator is holding brake with finger tips.

**W**ITH the many improvements over original design four years ago LUFKIN HOISTS are fast becoming standard equipment with a great many of the larger operators.

While Lufkin Hoists are designed to operate with Lufkin Units, they are also used in connection with Standard Rigs for handling rods and tubing quickly.

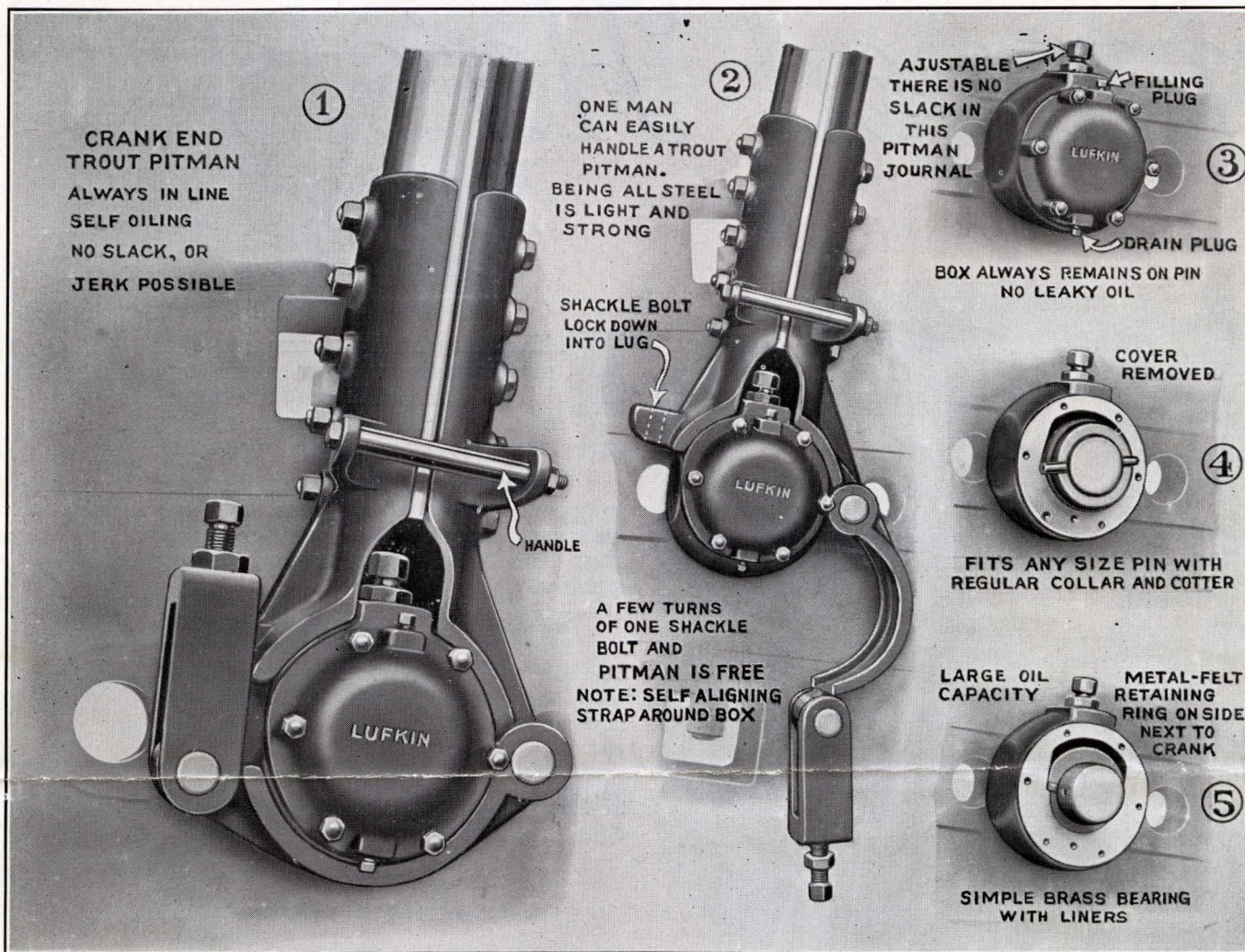
Lufkin Hoists are designed to simplify the work on the derrick floor and cut the time handling rods and tubing. They are much easier on motor and equipment and require less power than the old Standard Rig.

All Lufkin Hoists except Nos. 11-21-31 are equipped with Trout's Expansion Brake Drums.



Front view of Lufkin No. 12 Hoist. Note channel iron bracer between posts. Double brakes—Rugged construction.

THE LUFKIN LINE



TROUT UNIVERSAL PITMAN

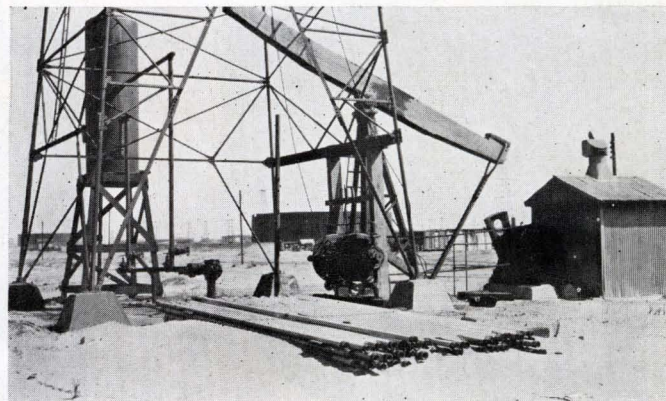
Self Oiling—Oil Tight—Dust Proof. Always on the Pin. Easily Adjusted. Loosening Shackle Bolt Unstraps Pitman From Box. Can Easily be Handled by One Man.

THE advantages of the Trout Pitman are at once apparent to the practical operator. The oil tight journal that remains on the pin, holds about one-half gallon of oil and needs attention only about once a month. The rounded convex connection to journal box permits considerable flexibility in case pitman and walking beam are not in absolute alignment.

The journal has a renewable bronze bearing on the lower half and a machined cast iron cap above with laminated shims between to take up wear, thereby preventing slack or jerk to be transmitted to the rods which is quite an improvement over the ordinary pitman.

The pitman frame and strap are of cast steel. The journal housing is of cast iron. 5" pipe is used for the connection and either regular stirrup or Trout Universal Connection connects pitman to beam.

Pitmans are sold complete or lower end only and while carried in stock in only A. P. I. sizes, they can be furnished for any size pin. They are light and can easily be handled by one man.

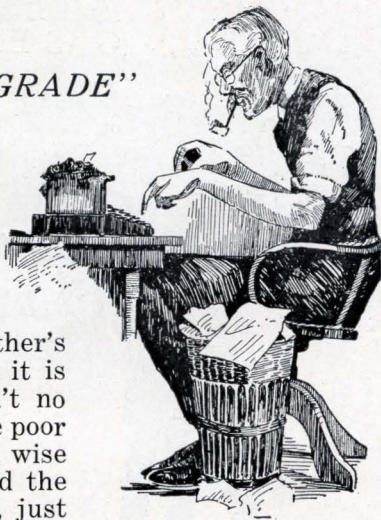


Where Trout Pitmans are appreciated most. Typical scene in West Texas where sand is above derrick floor. Sand cannot injure Trout Pitmans. Incidentally note lease is entirely LUFKIN EQUIPPED.

## Uncle Jarge's Musings

on  
"MAKING THE GRADE"

I heard a rooster once remark: "It sure is getting tough—Altho I hunt from dawn to dark I can't find worms enough; There's plenty when the weather's wet; But, gosh, when it is dry, there simply ain't no worms to get." And the poor cock heaved a sigh. A wise old hen who overheard the rooster thus complain, just smiled and clucked, "You silly bird, we can't always have rain. Now watch me close you foolish cock and you may learn a bit." She then flew on a nearby rock and gave her claws a whit. Then out into the field she flew, where the earth was hard and firm; The rooster crowed, "Go waste your thew—you'll never find a worm." But the wise old bird paid him no heed, but digging fast and free, she cackled, "Worms is what I need and they can't hide from me." I heard the cock enunciate as he turned and went his way, "There's not a thing to do but wait 'til there comes a rainy day." When he flew upon his roost that night his stomach suffered pain and he prayed with all a chicken's might, for the Lord to make it rain. But before the old hen went to sleep, she said, "I've dined right well, the worms were there—but down real deep and one must dig like hell."



One difference between a farmer and a city guy is that the farmer doesn't count that day lost whose low descending sun hasn't seen a luncheon club at noonday done.

# LUFKIN

## Foundry & Machine Co.

Eldorado, Ark. Tulsa, Okla.

Houston, Texas Los Angeles, Cal.  
New York, N.Y.

WAREHOUSES AND SERVICE MEN:  
Seminole, Okla. — Odessa, Texas — Bakersfield, Calif.

## Echoes From the Old Standard Rigs



### Power of Advertising

Card in Florida Paper: "Thursday I lost a gold watch which I valued very highly. Immediately I inserted an ad in your lost and found column and waited. Yesterday I went home and found the watch in the pocket of another suit. Thank you very much."

First Burglar—"Come on, Lefty, let's figure up what we made on this haul."

Second Burglar—"I'm too tired. Let's wait and look in the morning papers."

Sunday School Teacher—"And wny did Noah take two of each kind of animal into the ark?"

Bright Child—"Because he didn't believe the story about the stork."

Chief Clerk—"Why is your wife so suspicious of your stenographer?"

Trainmaster—"She worked for me once."

Pete Wheeler, of Hickory Holler, had ordered four tire covers from a mail order house. They were sent to him, and a few weeks later the manager of the mail order house was surprised to find the following letter on his desk:

"Gentlemen: A few weeks ago I ordered four tire covers from you. I put them on, and hadn't drove fifteen miles before the blame things had wore clear out. Now I want some new tire covers or my money back.—Pete Wheeler.

Salesgirl (at greeting card counter): "Here's a lovely sentiment, sir: 'To the only girl I ever loved.'"

Customer: "That's the stuff! Gimme a dozen of those."

She: I'd hate to be walking tonight.  
He: That's what I thought.—Colorado Dodo.

### Fine and Imprisonment

First Nut: "What is the penalty for bigamy?"

Second Nut: "Two mothers-in-law."

### His Nose Knows

Customer: "I want four pounds of brown sugar, two boxes of raisins, and—"

Grocer—"I'm sorry, Mr. Monroe, but we're all out of yeast."

# LUFKIN BABY UNIT

ELECTRIC MOTOR  
GAS ENGINE

*Used with or without derrick. Can be set in one corner derrick floor. Walking beam swivels to clear well for cleaning out.*



Lufkin Baby Unit complete as shown or may be furnished without walking beam rig.

This unit has been designed to fill a demand for individual service on wells where powers are not practical, especially in rough country.

*Individual Units Mean Greater Efficiency and Increased Production*

(Specifications and Other Information Upon Request)