

The LUFKIN LINE



VOL. II—No. 2
MARCH—APRIL, 1931

• California Exposition Number •

The Picture
VENICE OIL FIELD



PALM CANYON

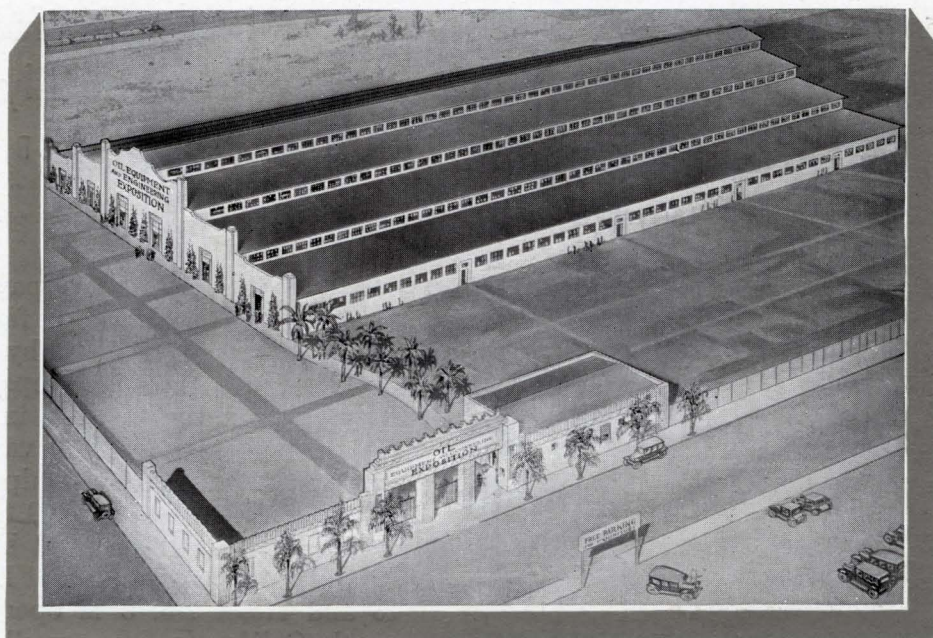
• Located about four miles from Palm Springs is a wonderland, with its neighboring Murray and Andreas Canyons, filled with thousands of prehistoric palms, whose origin will perhaps forever be shrouded in mystery—fruitful of legend and romance.

• Imagine the delight of awakening some January morning—or any winter's morning—to find a bright, beaming, warm sun streaming through your open windows or into your sleeping porch; hear the singing of birds, the neigh of a horse, the friendly voice of a dog on a romp with its master, the laughter of healthy children, and you, yourself possessed of an undeniable wish to join in with all of them and proclaim the world and your fellowman to be quite all right after all?—And in the cool of that evening—seats under palm trees—vine-covered pergolas—moon big as a basket arising over a distant purple mountain—star-gaze into a canopy of sparkling jewels—and in the distance see the beacon

firefly light of the Limited flying through the night—

• All these and much more is to be experienced in California's Desert resort, Palm Springs.

• Palm Springs is located on the western rim of what is geographically known as the Colorado Desert of California. With an elevation of 452 feet above sea level it is noted for its ideal winter climate, its health-giving springs and its scenic spots which excel in the beauties of nature. Here in Southern California is a resort so distinctive, so all-embracing that it will overwhelm, fascinate and intrigue you—and bring you health and contentment beyond reckoning.



●

Second Annual

Oil Equipment and Engineering Exposition

To Be Held in Los Angeles, March 16 to 22

To be only Oil Show During 1931 ●

IN ORDER to facilitate the showing of the latest designs in oil field drilling, production, transportation and refining equipment, to the oil men from all parts of the world, the Oil Equipment and Engineering Exposition is making every effort to provide the most ideal conditions for the display of tools and machinery at the second Annual Exposition which will be held March 16 to 22, 1931, in Los Angeles, California.

- Organized in 1929 with Mr. E. G. Lenzer as General Manager, the Oil Equipment & Engineering Exposition has made rapid progress since its first oil show in Los Angeles in 1930. Rapidly changing conditions in the oil industry has made it necessary, according to the Directors of the Oil Equipment and Exposition, to hold an Annual Exposition every year and carry on a

permanent Exposition throughout the year.

- The main Exposition building offers 72,000 square feet of exhibiting space, and has every modern facilities to make a display most advantageous to the oil men who will inspect them. Many of the tools and machinery will be in operation, while others will be demonstrated in their application.

- On the outside spaces, drilling rigs will actually make hole. The first "location" has already been made, and the derrick and rig will be in place some time before the opening date of the second annual Exposition. A complete rig will here be demonstrated, and Engineers will be on hand to explain new development in the equipment. Other outside spaces will be used for plant installations and heavy machinery of larger type.

- Considerable interest is being displayed in the show of inventions, it is said, which will be of value to both the manufacturers and the oil men. These will be of devices not yet manufactured, and will be displayed either as models or drawings with a complete description of construction and application.

- The Exposition is located in the heart of the Los Angeles oil fields, and is within a short distance of all the other California fields. Trips through the local fields are being arranged, so that all visitors from outside the State will be given an opportunity to inspect the methods being employed in California. These trips will be free, as will admission at all times to the Exposition; but both the free trips and free admission will be confined to those who are connected with the oil industry in some capacity.

Deep California Pumpers Easily Handled by

By E. P. TROUT

California District Manager

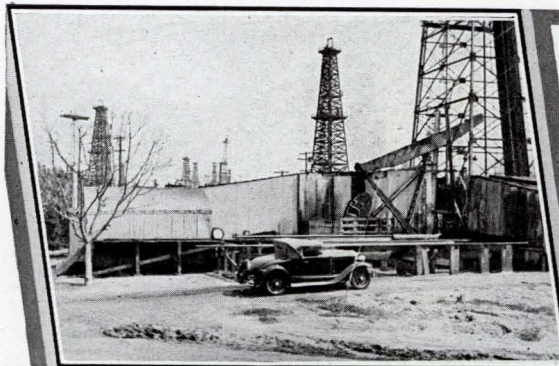
THAT the "deep pay" of California holds no terror for Lufkin Units is attested to by the fact that

Lufkin Units have been operating successfully on the deepest wells in California for the past six years. The varied California conditions find Lufkin equipment operating on wells as shallow as 1400 to 1800 feet and on wells that were drilled below 8000 feet. It is of interest to note that Lufkin Unit No. 16 and Hoist No. 3 is operating at Inglewood, California, on a well approximately 2400 feet deep and has handled from 200 to 400 barrels of fluid daily for over four years. Previous to this, the Unit was on a well at Torrance, California.

• In the early stages of their introductory to the operators of California, Lufkin Units were subjected to all sorts of tests and trials to prove their advantages over the old Standard Rig. So successfully were the tests that a good many of the larger operators have standardized on LUFKIN UNITS and today are operating a large number and are installing them on all new leases. This also applies with equal force to the complete line of Lufkin Hoists, Walking Beams, Posts, Pitmans and is particularly true of the Trout Counterbalance Crank.

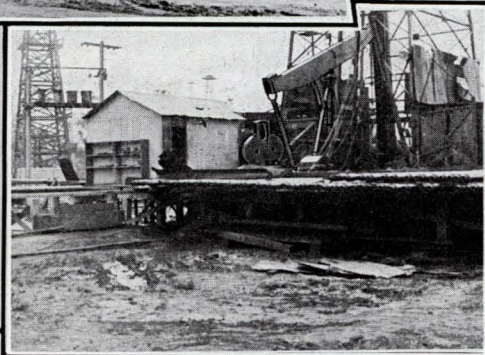
• The high salvage value of Lufkin Units; ease of transfer from one location to another are features desired by all operators and were particularly appealing to those in California. Some Lufkin Units have pumped dry as many as three wells.

• Lufkin equipment helped one concern establish a record for the re-drilling and cleaning out of an exceptionally deep well at Signal Hill. The well was drilled to 7000 feet with a rotary and deepened with cable tools to 8300 feet with the use of a Lufkin Heavy Duty Unit and

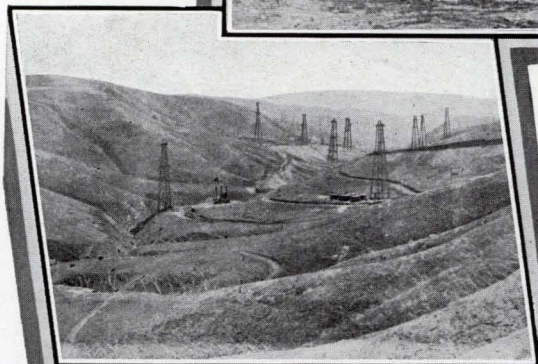


• Lufkin Counterbalance Crank installed on 8000' well at Santa Fe Springs, for the Standard Oil Company. This well was tubed to 7000 feet for an experimental purpose for pumping a well from this depth from the beam. Nothing but the smooth and steady operation of a Trout Counterbalance Crank could enable them to pump from this depth successfully.

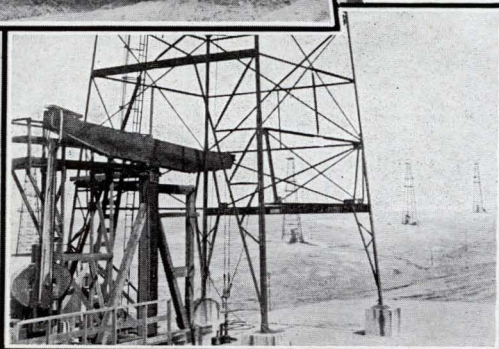
• Lufkin Unit & Hoist on 8300 ft. well Signal Hill, Cal.—drilled with cable tools from 7000 ft.—pipe perforated for 1300 ft. The Lufkin Heavy Duty California Type Hoist is the only hoist on the market capable of spooling 8500' of 7/8" line.



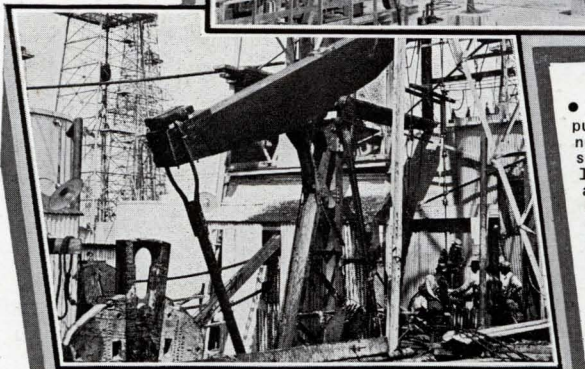
• Lufkin installations, Round Mountain, California. It is significant to note that every visible derrick is completely LUFKIN equipped. Difficult locations where space is at a premium, or where compactness is desired, makes a LUFKIN installation ideal.



• Kern River Installation and 5 more in a row. A typical installation on West Front in which all rigs shown in picture are equipped with Lufkin Standard Pumping Units. These units in operation over four years with no maintenance or shut-down time.



• Putting Jergins Cap No. 1 to pumping, Venice, Cal., one of a number of rigs. Equipment consists of Duty Worm Gear, No. 141 Hoist, No. 1 Samson Post and Pitman. Bill Wildman, Gen. Supt., and Tom McCarty, Supt. of Prod., are 100% sold on Lufkin Equipment and have used it for their standard the past few years. Remarkable records have been established by this company on re-drilling jobs with Lufkin Units and Hoists at Signal Hills, Cal.

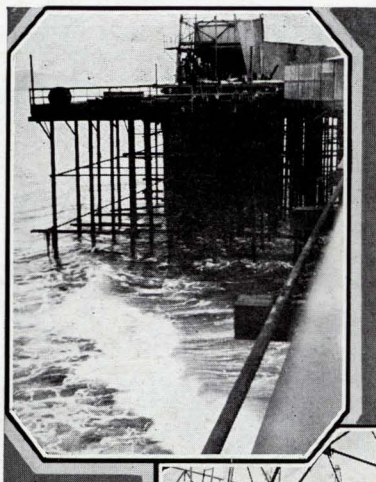


LUFKIN UNITS

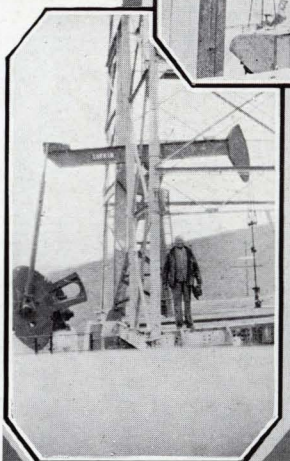
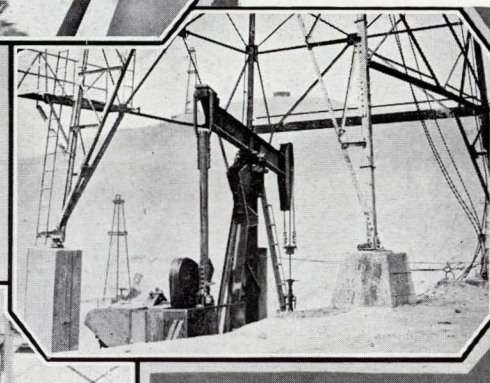
No. 141 Hoist. Thirteen hundred feet of pipe was perforated from the 7000 foot level to the bottom of the hole. No trouble was experienced in completing the job and the average time was reduced considerably. Incidentally the Lufkin No. 141 Hoist is the only Hoist manufactured capable of handling 8500 feet of $\frac{7}{8}$ " line.

- Lufkin-Trout Counterbalanced Cranks are in evidence in every new field of any consequence in the State. The many advantages of this crank led one Company to make an installation on a well, undoubtedly equipped with the longest string of rods in the State, if not in the world. This well is located at Santa Fe Springs, was equipped with approximately 7300 feet of $\frac{3}{4}$ " rods. The smoothness of the Trout Counterbalanced Crank reduced fatigue and crystallization of the rods to an absolute minimum.
- The inherent love of all Californians for the thing neat, clean, and beautiful is permitted to express itself in the use of Lufkin Units. Lufkin Unit installations permit of cleanliness, fire hazard reductions, and the beautifying of the lease. "The smoothest operating and the neatest installation we have," is a common remark for the user of LUFKIN UNITS.
- I think it is as true here as any where, that Lufkin users are Lufkin boosters.

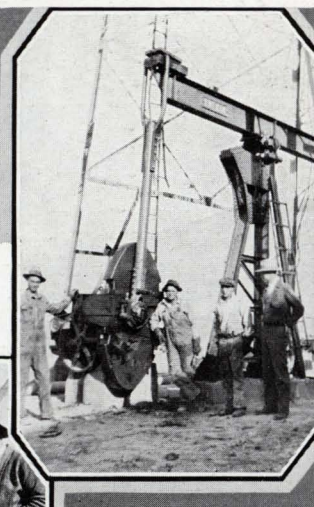
• 3 wells on Round Mountain near Bakersfield, Cal. View of Lufkin Standard Installation in the Round Mountain Field in which every pumping well in the field is Lufkin equipped. Note how rig and concrete floor are embedded in side of mountain. Within a very few feet of the lower edge of the derrick there is a drop of nearly 500 feet.



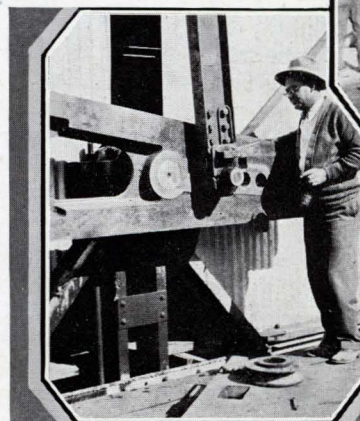
• Continental Oil Company's installation at Carpinteria, California. This well is located about 700' out from the shore, one mile south of Carpinteria. This Intermediate Unit was used for an auxiliary in drilling and was connected by means of a chain drive from a 120 H.P. Clark Drilling Engine. Several Intermediate Pumping Units are in operation for this Company at Seal Beach, California.



• Texas Company installation at Poso Creek showing stripped standard Unit and Lufkin No. 2 Post assembly. Mr. Ufkin (in the picture) is the pumper on this lease.



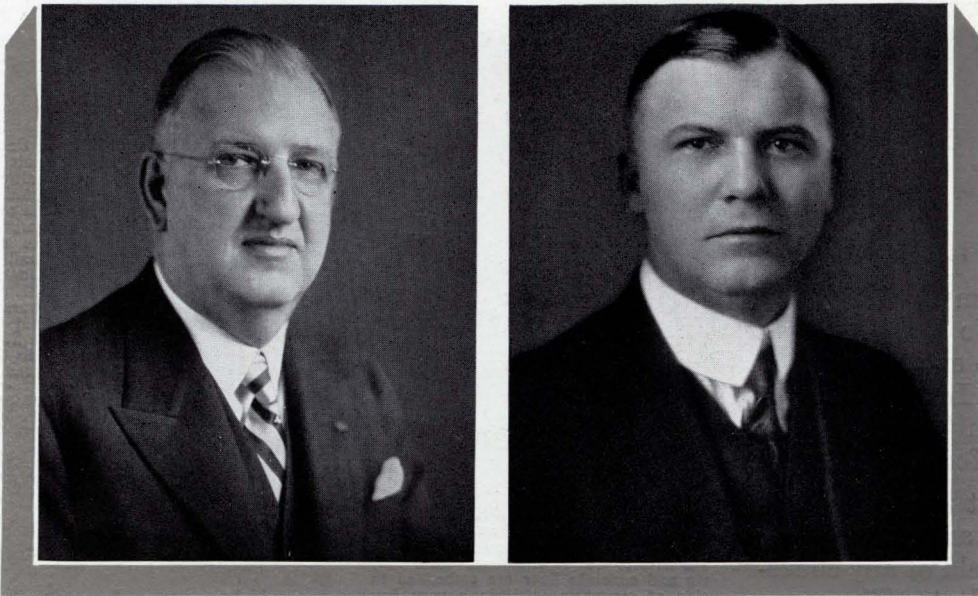
• Typical installation in Kern County near Bakersfield, California. On the right is R. R. (Robby) Robison, Engineer in charge of this field.



• Petroleum Securities installation of Lufkin Counterbalanced crank on standard rig in Poso Creek. After installation of the first rig all A.P.I. Cranks were replaced with Lufkin Counterbalanced Cranks on which they have standardized. Roscoe Arnold, shown in the picture, is Superintendent in Kern County for this Company.

• The Lufkin exhibit will occupy booths No. 138 and No. 140 on aisle three of the main Exposition Building. Chairs and lounges will be provided for the comfort of those who would make Lufkin's Booth their headquarters. The Booth will be in charge of E. P. Trout, California District Manager, and Fred E. Yeager, Field Representative. W. C. Trout, President of the Company, will also be an attendant upon the Exposition.

Lufkin invites all visitors to the Expositions to make full use of its office facilities which are located at 801 Commercial Exchange Bldg., Los Angeles, California, in charge of E. P. Trout, District Manager.



W. C. Trout, President

J. H. Kurth, Jr., Vice-President

Lufkin directors name

W. C. Trout, President

J. H. Kurth, Jr., Vice President

AT THE annual meeting of the Directors and stockholders of the Lufkin Foundry & Machine Company, Walter C. Trout was elevated from the position of Vice President and General Manager, to that of President, succeeding the late J. H. Kurth, Sr. J. H. Kurth, Jr., one of the best known and most successful lumbermen in the South, who has been connected with the Company financially for a good many years, was elected Vice President.

- W. C. Trout, Patentee of numerous appliances for the oil industry, has been actively in charge of the operations of the Lufkin Foundry & Machine Company for more than a quarter of a century during which time it has grown from a small beginning to its place as the largest industry of its kind in the Southwest.

- J. H. Kurth, Jr., the new Vice President, has been more closely connected with the lumber industry, having spent the last ten years actively in charge, as President and General Manager of the Vernon Parish Lumber Company of Kurthwood, Louisiana.

- Mr. Kurth is a Director of a number of banks and other business ventures in Texas and Louisiana and being possessed of a sound business acumen and a wealth of experience in the successful administration of the many business enterprises

with which he has been connected, is expected to add considerable strength to the company and his addition to the directorate and the Vice Presidency is hailed as a forward step.

- Other officers and Directors include: C. B. Edwards, Treas.; W. D. Winston, Jr., Secretary; Eli Weiner, G. A. Kelley, E. L. Kurth, S. W. Henderson, Jr., and A. E. Percy.

- Some idea of the size of the Lufkin plant can be gained from the bird's-eye view on pages 8 and 9.

The Lufkin Line

MARCH-APRIL 1931



W. D. WINSTON, JR.
Secretary



G. A. KELLY
Director



C. B. EDWARDS
Treasurer



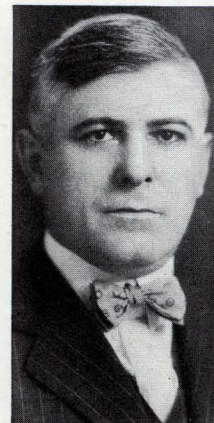
ELI WEINER
Director



S. W. HENDERSON, JR.
Director



A. E. PERCY
Director
Fdy. Supt.



E. L. KURTH
Director

Directors and Officers of the Lufkin Foundry

ORGANIZED in 1900 for the purpose of serving the Saw Mill Industry of the then thickly forested pine belt of East Texas, the Lufkin Foundry and Machine Company enjoyed a rapid growth, and its products soon became known and used throughout the Lumber Industry of this and foreign Countries. During its twenty-two years of exclusively serving the Saw Milling Industry, some of the largest Saw Mills in the Southwest were manufactured in its Lufkin plant.

- With the vanishing timber supply, it was found necessary to direct the energy, activity and facilities of this plant to an industry that could consume its production. The result was that for the first time in the Southwest Refinery and Pipe Line fittings of a standard and special nature were manufactured in Lufkin.
- Attention to the production division

of the oil industry followed, resulting in the development of the Lufkin Worm Gear Pumping Unit, and a few years later, the Lufkin Herringbone Unit was introduced. Seven years ago, the first Lufkin Unit was installed in a Gulf Coast oil field. Since that time, nearly two thousand Lufkin Units have been installed in domestic and foreign fields. With the development of the Lufkin Unit came the Trout Counterbalance Crank, accepted by oil producers, after exhaustive tests of every conceivable method, as the most desirable and effective medium for balancing wells. Numerous developments in Hoists, Beams, Pitman and Posts quickly followed.

- The Lufkin plant now occupies many thousands of square feet of floor space; its Foundry, Machine Shop, Boiler and Forge Departments are all housed in modern, well lighted and ventilated structures, employing the most up-to-date modern and efficient production tools obtainable.

- Lufkin Engineers are continually developing new and efficient equipment for the Oil Industry while modern production tools, skilled men and improved manufacturing methods are being constantly added to the facilities and forces of the Lufkin Company—some idea of its facilities may be gained from the bird's-eye view on pages 8 and 9. Branch warehouses and offices are located at Houston, Odessa, Tulsa, Seminole, El Dorado, Los Angeles, Bakersfield, Longview and Tyler, with exports sales offices in New York City.

The Home of the LUFKIN LINE





W. F. SCHUESSLER
CHICAGO

• Lufkin Foundry & Machine Company, Lufkin, Texas •
"MACHINERY MANUFACTURERS SINCE 1900"

Oil Company Buildings Contribute Their Part to the Beauty of California

ENTERPRISING . . . Modern . . . two words highly symbolical of the "Magic" California; scene of America's greatest development of the past ten years . . . fertile valleys . . . multi-mineraled mountains . . . busy factories and the two Southern California Cities; Los Angeles and San Francisco, headquarters for the leading railroads, shipping lines, Oil Companies and financial institutions of the West.

- The Oil Industry has contributed immensely to this progressive and enterprising spirit as the pictorial assembly on this and the page following will attest. One will note, without exception that the buildings are of distinct types of architecture. They represent the very best in architectural beauty and utility . . . gems of civic progress, and are very much in keeping with the prevailing California spirit.

- The State of California ranks first in oil production by a safe margin and of the total world's oil produces about twenty per cent.

- The Oil Industry has contributed much to the progress and prosperity of this country that is so richly filled with romance, adventure and opportunity.

- The very fine and remarkable thing about California in this modern day, is that it has apparently lost none of its charm as an attraction for those seeking the pleasures of a wonderland or for those seeking business opportunities.

- Founded in 1781, Los Angeles has become, today, the largest city on the Pacific Coast and is surrounded by a brilliant constellation of smaller cities and towns with an "area" populated of almost three million people.

- San Francisco boasts of the largest land-locked harbor in the world and in terms of tonnage value, the Nation's second port.

- California . . . interesting, fascinating . . . where "thousands of those who come to visit, come again to live."



• *New home of the Shell Oil Company, Los Angeles, California. A distinct and beautiful type of architecture and a real contribution to this Southern California city.*

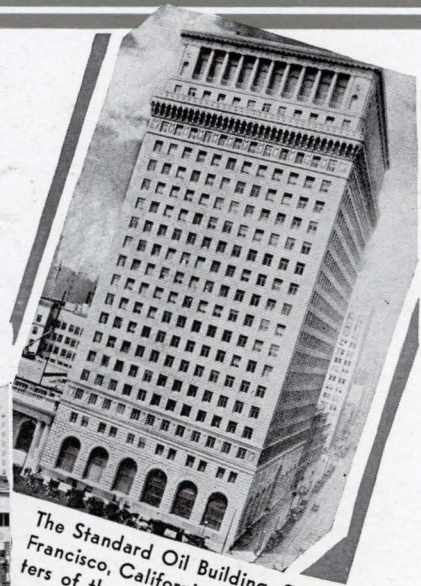
The Lufkin Line



The Signal Oil and Gas Building, Los Angeles.



The Commercial Exchange Building, Los Angeles. Headquarters for the Barnsdall Oil Company, Western Oil and Refining Company, and California offices of the Lufkin Foundry & Machine Company.



The Standard Oil Building, San Francisco, California, headquarters of the Standard Oil Company of California.



Union Oil Building, headquarters for the Union Oil Co., of California.



A. T. Jergins Building, Long Beach. Home of the A. T. Jergins Syndicate and the Jergins Trust Co.



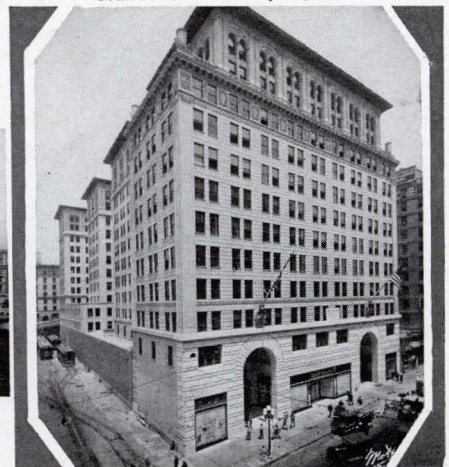
Standard Oil Building, Los Angeles. Headquarters in Los Angeles of the Standard Oil Company, of California.



Petroleum Securities Building. Headquarters of the Petroleum Securities, Pacific Western and several Independent Companies.



The Higgins Building, Los Angeles. Headquarters of the Shell Oil Company, and the General Petroleum Corporation.



Sub. Terminal Bldg., Los Angeles. Hdqrs. for the Cont'l Oil Co., Geo. F. Getty Oil Co., Rio Grande Oil Co., and several independ'ts.



Above: Standard Oil's new plane carries 18 passengers and has a top speed of 145 miles per hour.

Below: Passenger comfort has not been overlooked. Convertible sleeping quarters and a large buffet are features.



Flagship for Standard Air Fleet

STANDARD OIL Co. of California has put in service the new flagship of the company's air fleet, "Standard of California No. 6."

- Modern flying and navigation instruments, approved safety devices, landing lights, taxiing lights, regulation navigation lights, and four large emergency parachute flares fit the plane for night flying. Six large overstuffed chairs and two lounges, which are convertible into private sleeping quarters, a buffet, with necessary utensils, including a stove that burns Flamo, the Standard Oil portable gas which allows for the preparation of hot meals while the ship is in the air, is also part of its equipment. Radio-telephone equipment also enables the pilot to pick up weather reports and to broadcast from the plane.

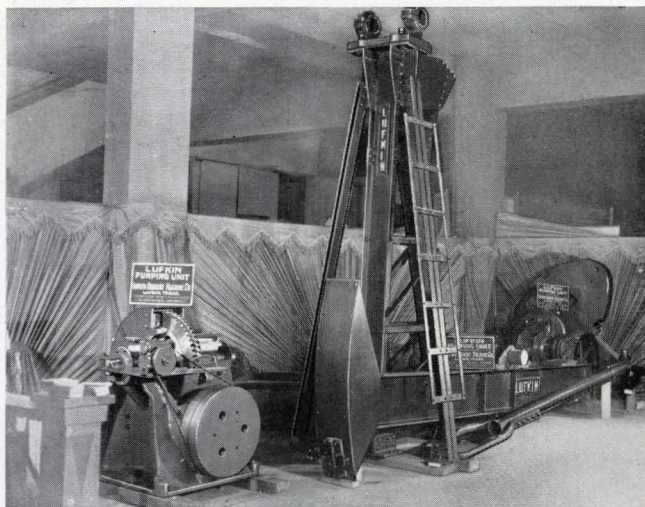
- The plane, an 18-passenger, tri-motored Boeing biplane, with three air-cooled, nine-cylinder, 525-horsepower Pratt & Whitney "Hornet" engines, will be used principally for transporting Standard Oil executives when time-saving is imperative. It will also be used for good-will, publicity, and educational work.

Lufkin Exhibit at Exposition

LUFKIN will display the latest design of both Herringbone and worm gear units. A cut-away Unit of the Herringbone Gear, showing its interior working mechanism, will be on display.

- For those interested in pumping shallow wells, the Lufkin Baby Worm Gear, or Junior Herringbone Gear Unit is connected with Lufkin No. 2 Post assembly, consisting of post, I-beam type walking beam, and Universal Pitman, will be on exhibition. This will be equipped with a 10-H.P. straight induction motor V-belt drive. A disassembled Universal Pitman showing all of its parts will also be on display.

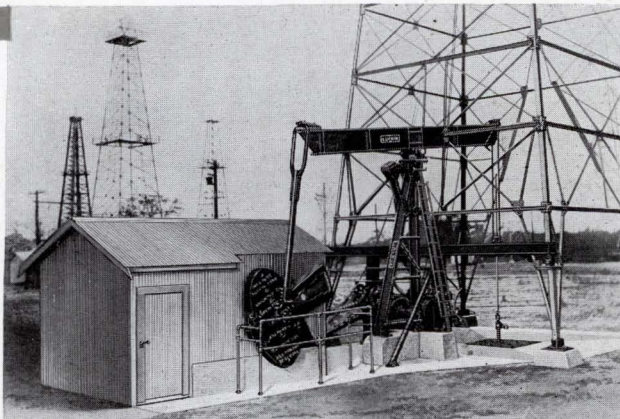
- Ample chairs, lounges, and desk spaces have been provided in booths No. 138 and No. 140, on aisle three of the main building, to which all friends are invited to make headquarters.



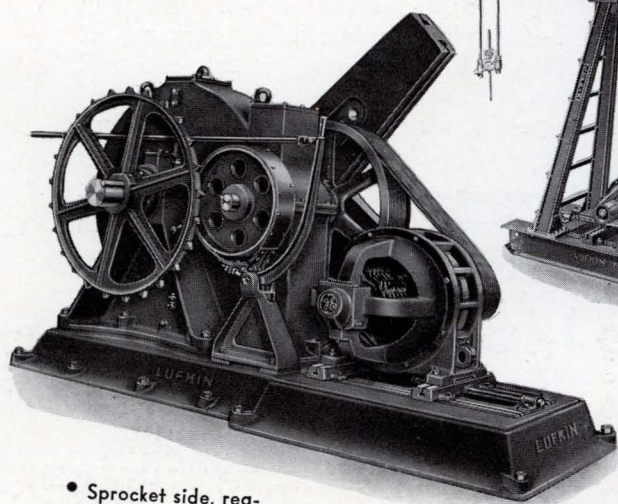
Lufkin's 1930 Exhibit at the California Exposition. This year's exhibit will be even more extensive.

The Lufkin Line

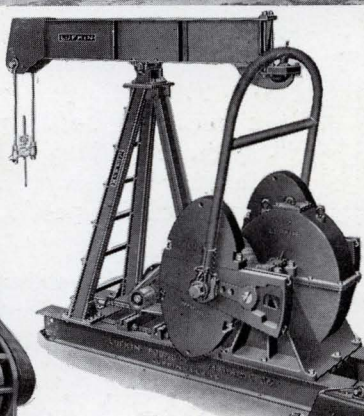
• Lufkin Herringbone Units are made in a number of sizes to suit well conditions—for the shallow, and the deepest wells. Nearly two thousand Lufkin Units are in use today.



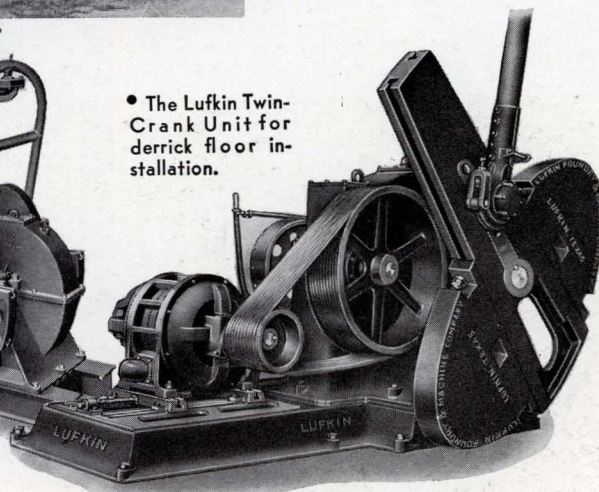
• Left—a typical Lufkin Herringbone Unit installation with all Lufkin auxiliary equipment.



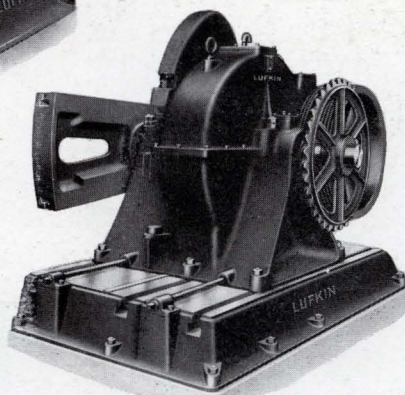
• Sprocket side, regular pattern, Lufkin Herringbone Unit.



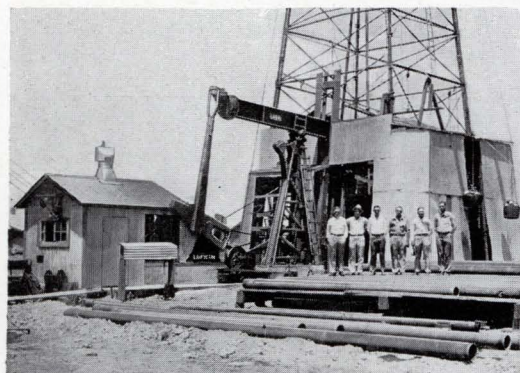
• The Lufkin Twin-Crank Unit for derrick floor installation.



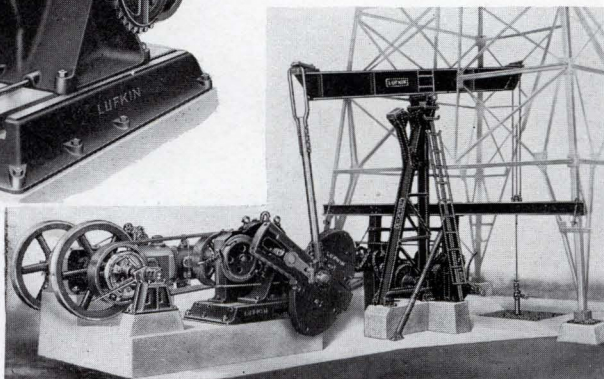
• Crank side, regular pattern Lufkin Herringbone Unit.



• The Lufkin Slide Base Unit permits adaptation to single or Multi-cylinder Engines without Use of Tightener.

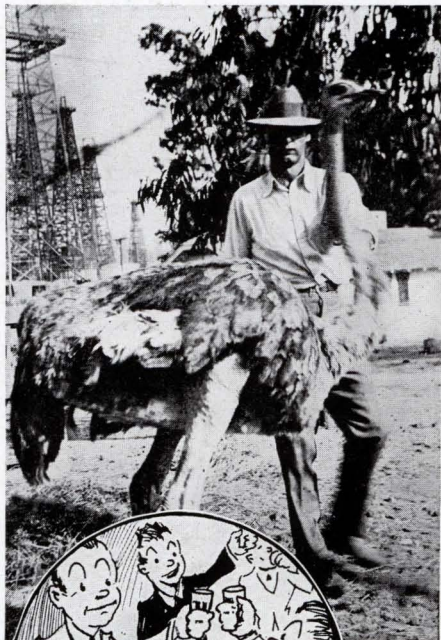


• Drilling with Lufkin Herringbone Unit. A record was established on this job . . . full details upon request.



• Installation view of Lufkin Slide Base Unit . . . a particular adaptation for single or multi-cylinder engine drives.

• Full information and details concerning Lufkin Equipment is contained in the new No. 31 catalogue which will be gladly furnished upon request.



Ostrich Lease, "Rudy No. 1" Goes on Production

WHAT IS SAID to be the first Ostrich ever to produce cheer to an oil man has been found in California, according to Bill Wildman, Supt. of the A. T. Jergins city lease, Signal Hill, Long Beach, California, and pictured alongside the productive bird at left.

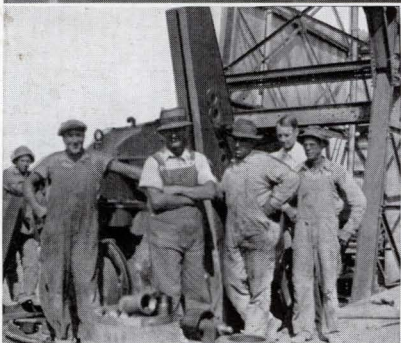
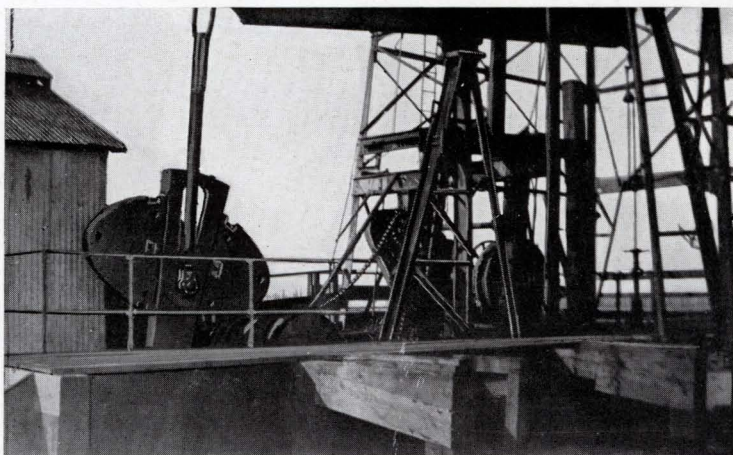
• According to all information, "Rudy," mascot of the Jergins lease for seven years, laid its first egg sometime ago. So jubilant was Bill over the new production that a Kitchen Laboratory test was ordered. Accordingly chief F. E. Yeager, after making certain tests with equipment at hand, plus predetermined amount of "Joy juice" adjudged the production as first rate and with other friends gathered around Bill's festive board and proceeded to participate as royalty holders in Rudy's No. 1.

• According to a standard determined by the U. S. Department of Agriculture one ostrich egg is about the equal of two and one-half dozen of the barnyard variety.

Six Years—No Maintenance Expense

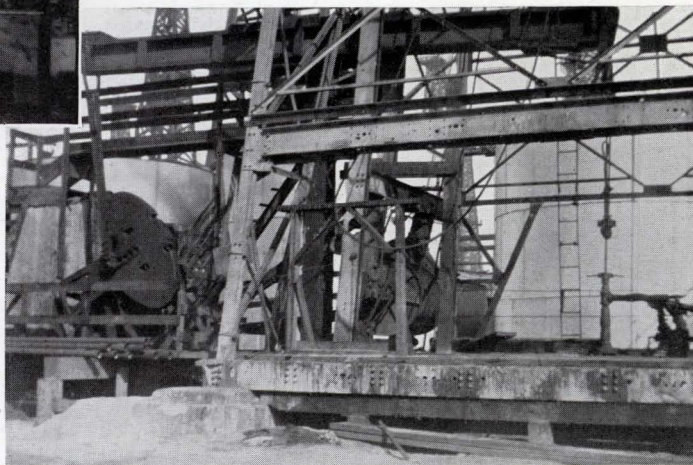
Record of Lufkin Unit at Huntington Beach

• Pictured below is the first Lufkin Heavy Duty Unit installed in Huntington Beach, California, which has been in constant service since 1925 without one cent of expense for repairs, etc. Just a regular Lufkin record.



• Lufkin Unit with a single cylinder engine drive for the Standard Oil Company, at Maracopa, Calif.

• Installing Lufkin Unit for Standard Oil Company, Maracopa, Calif. Mr. Kennedy (Center) Pusher, in the rear Mr. Johnson, of Engineering Department.



The Lufkin Line

MARCH-APRIL 1931

The Lufkin Line

Published to promote Friendship and Good will with its customers and friends and to advance the interest of its products by the Lufkin Foundry and Machine Co.
A. E. CUDLIPP, Editor.

Vol. II March-April, 1931 No. 2

Oil for East Texas

DISCOVERY of an oil field which promises to develop into one of the major producing areas of the United States, in the very center of East Texas, adds a new source of wealth to a section which already was enjoying rapid growth.

- The thriving towns of Tyler, Longview, Henderson and Kilgore are in the midst of a healthy boom, with business men, oil operators, promoters, lease buyers and financiers crowding the available hotels to capacity.
- Harry F. Sinclair, who inspected the Henderson oil area, pronounced the new field one of the most promising ever developed in this land of gushers. Plans already are under consideration for the construction of several small refineries in the Henderson area. Railroad lines are contemplating extensions to take care of the prospective movement of petroleum.
- This latest strike indicates that the wealth of Texas in natural resources is as yet only partially exploited. As men continue to probe the earth, undreamed of stores of valuable minerals are uncovered.

Not Dead Yet!

Jailer (to prisoner awaiting execution): "You have an hour of grace."
Prisoner: "O.K. Bring her in."

Oh, Yeah?

Father—"What did you and Joe talk about last night, Daughter, that kept you so quiet and interested in there in the dark?"

Daughter—"Oh, we talked about things, Father, that young men and young women wouldn't have dreamed of discussing fifty years ago!"

Father—"What, for instance?"

Daughter—"Airplanes, and radios, and talkies, Dad!"

Truth in Advertising

And another feature that the makers of the Dictaphone could truthfully advertise is that it never takes a man's mind off his work by crossing its knees.

The Touch System

A young man, given much to making whoopee, went temporarily blind from the effects of some prohibition giggle soup. Seeking to cheer him up, a young lady called at his apartment.

"Guess who I am?" she said.

"I don't recognize the voice," stated the young man, "but maybe I can tell by feeling of your face—like blind men usually do."

He felt the young lady's features for a moment without much success. Then an idea came to him. He felt the girl's ankles.

"Nice of you to call, Alice," he remarked.



Avoid That Future Shadow!
Reach for a Lucky Instead of a Sweetie!

A Find

A bleary-eyed man entered a savings bank and hurried up to the teller's window. "Lemme have two cases right away," he said, pushing a \$50 bill through the grating.

"What do you mean? Two cases of what?"

"Hanged if I know what name you give it," was the reply, "but I saw a sign outside that said '4 per cent,' and I'll drink it whatever it is."

Say When—

"We all want you to come to our party, tonight, Mandy."

"Can't Sambo, I've got a case of diabetes."

"Come along anyways, Mandy and bring it wid you. Those niggers will drink most anything."

Here's one on the absent minded flapper who rode 10 miles into the city to have a tooth extracted and when the dentist told her he was out of gas got out of the chair and walked home.

—Pure Oil News.

For Golfing, of Course, You Dope!

Hilda—"What are the best years of a man's life?"

Pete—"For what?"

The old-fashioned girl may have known all about cooking a dinner, but she wasn't one, two, three with the modern girl in getting one.

He never was dated, he never was wed,
He never would look at a femme;
But he read all the hosiery and lingerie ads,
And he learned about women from them.

Applesauce

When Adam in bliss,
Asked Eve for a kiss,
She puckered her lips with a coo
With looks quite ecstatic,
She answered emphatic,
"I don't care, Adam if I do."

The Village Gas-Smith

Beside a tank of gasoline
There stands a hired hand—
He's smeared with oil from honest toil,
He sells 'most ev'ry brand.
And what was once a chestnut tree
Is now a hotdog stand.

A Simple Equation

2 pints=1 quart.
1 quart=2 drunks.
2 drunks=1 fight.
1 fight=2 cops.
2 cops=1 judge.
1 judge=30 days.

With Violet in his arms,
He drove his car—poor silly
Where once he had a violet,
He's now holding a lily.
—Pure Oil News.

O Yes?

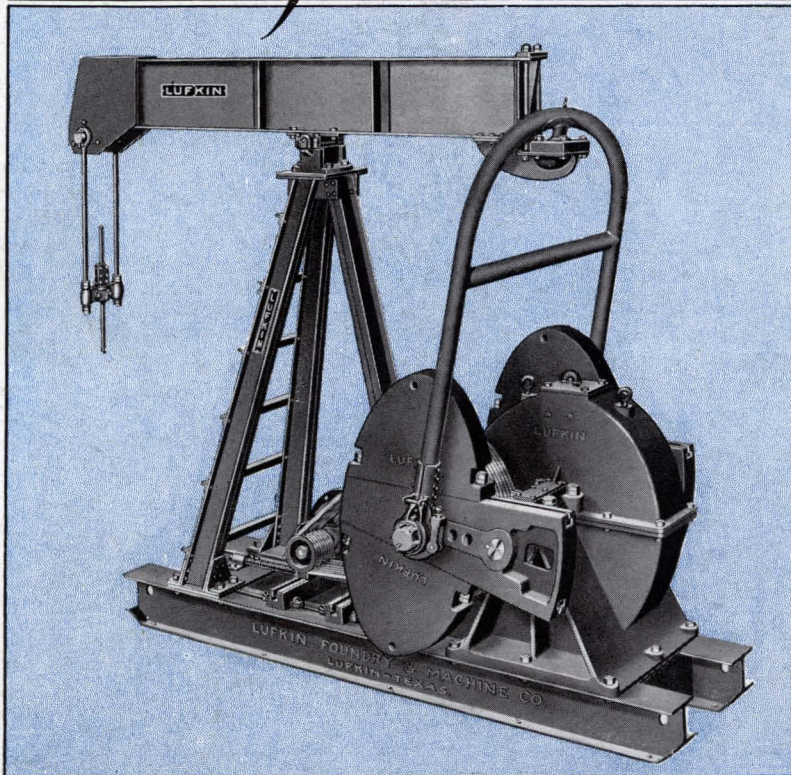
The horse and mule live 30 years,
They never taste light wine and beers.
Sheep and goats are dead at 20,
They drink no liquor—water plenty.
At 15 dogs are mostly dead,
They look not on the wine when red.
At 10 the cat's lost all nine lives—
No beast on milk and water thrives.
At 5 most birds have passed away,
Far, far from alcohol they stay.
Bugs spend but few days on this earth,
They never know the cocktail's worth.
But evil, wicked, rum-soaked men
Live on to three score years and ten.

She was only a night clerk's daughter,
but she knew how to register.

Teacher—"If a number of cattle is called a herd, and a number of sheep is a flock, what would a number of camels be called?"
Little Johnny—"A carton."

So he called his sweetie queen because she took his jack.

The Lufkin TWIN CRANK Unit



- The Lufkin Twin Crank Unit has been designed especially to install on the derrick floor where wells are situated over water or marshes where foundations are impractical. It is also used for testing before deciding upon permanent equipment.

- The Twin Pitman is of bent pipe construction with a universal "Ball Joint" connection to beam allowing for any possible mis-alignment and provides equal pull for each crank. Trout Universal Pitman (Box on pin) with steel shackle connection, oil tight, dust proof, is regular equipment.

- The Sykes-Herringbone type of gearing is used in this unit and in general is designed after the fashion and with the same degree of care as the larger sizes of Lufkin Herringbone Units.

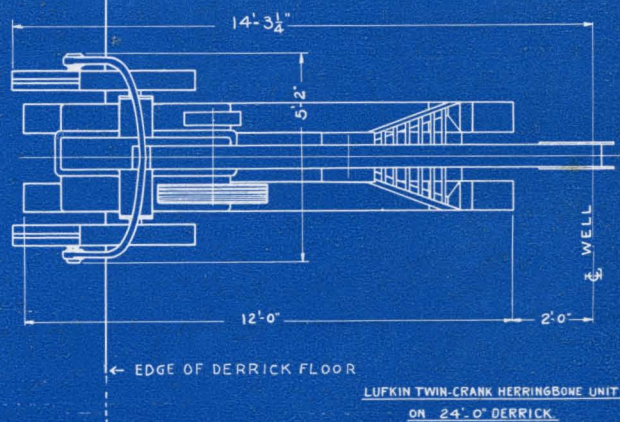
- The Twin Crank, being perfectly balanced, eliminates all winding or "weaving" and provides approximately forty percent more effective balance.

- The entire unit is mounted on two 10" "H" Beams, securely welded together and occupying a space 2'8" x 12' or 14' from center of well to rear of skids, permitting installation on a 20' or larger derrick without too much overhang. The layout shows installation on a 24' derrick.

- The Samson Post, of tripod design, is bolted to the "H" beam base with two legs forming a ladder in front and one leg forming a support, providing ample rigidity and support to beam.

- The motor is mounted on a Lufkin Universal slide base and has ample take-up.

- Complete specifications will be gladly furnished upon request.



LUFKIN FOUNDRY & MACHINE COMPANY

General Office and Factory

LUFKIN « » TEXAS

Branch Offices and Warehouses

HOUSTON

TULSA

LOS ANGELES

NEW YORK

EL DORADO

ODESSA

SEMINOLE

BAKERSFIELD