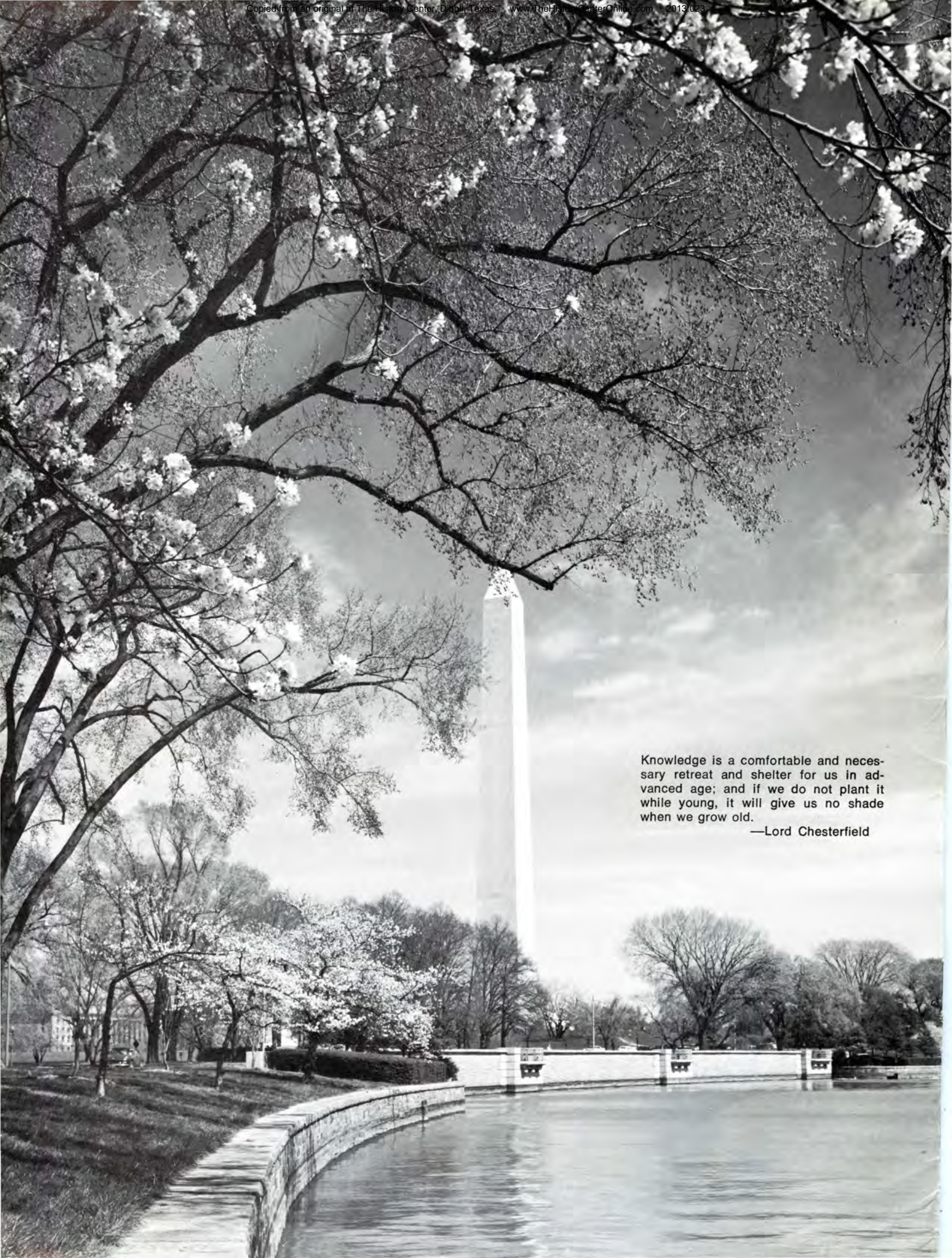




The **LUFKIN** Line

SPRING • 1972

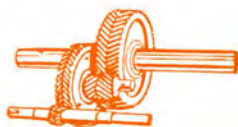


Knowledge is a comfortable and necessary retreat and shelter for us in advanced age; and if we do not plant it while young, it will give us no shade when we grow old.

—Lord Chesterfield



OIL FIELD PUMPING UNITS



GEARS FOR INDUSTRY AND SHIP PROPULSION



TRAILERS FOR EVERY HAULING NEED

The **LUFKIN** Line

SPRING, 1972

Volume 47 • Number 1



Virginia R. Allen, Editor
Carolyn Curtis, Ass't. Editor

OREGON'S VOLCANIC DRIVE — Shirley Parenteau	4
HERE AND THERE WITH LUFKIN GEARS	8
SNAPSHOTS BY LUFKIN CAMERAMEN	10
LUFKIN INSTALLATIONS	12
MORE SNAPSHOTS	14
WHEN THE CANE WAS RIPE	16
THE AEC CAME TO LUFKIN	17
LUFKIN'S PACIFIC COAST DIVISION	18
LUFKIN LAFFS	19

COVER: Transparency by William Hamilton, Munich, West Germany
OPPOSITE PAGE: Washington Monument from the Tidal Basin
— Photo by Gene Ahrens, New Milford, N. J.

Published to promote friendship and good will with its customers and friends and to advance the interest of its products by LUFKIN INDUSTRIES, INC., LUFKIN, TEXAS.

CIRCULATION THIS ISSUE

MACHINERY DIVISION SALES AND SERVICE OFFICES

ATLANTA, GEORGIA
5190 Antelope Lane
Stone Mountain, Georgia
Phone: 404-939-3119

BAKERSFIELD, CALIFORNIA
2500 Parker Lane
P. O. Box 444
Bel Air, Maryland
Phone: 805-327-3563

BALTIMORE, MARYLAND
P. O. Box 673
Bel Air, Maryland
Phone: 301-879-9264

CASPER, WYOMING
100 Warehouse Road
P. O. Box 1849
Phone: 307-234-5346

CRYSTAL LAKE, ILLINOIS
18 Grant Street
P. O. Box 382
Phone: 815-459-4033

CLEVELAND, OHIO
203 Commercial Bldg.
33467 Lake Rd.
Avon Lake, Ohio
Phone: 216-933-8191
Phone: 216-871-6864

DALLAS, TEXAS
800 Empire Life Bldg.
Phone: 214-748-5127

DENVER, COLORADO
1138 Lincoln Tower Bldg.
Phone: 303-222-9589

HOBBS, NEW MEXICO
P. O. Box 97
123 W. Gold
Phone: 505-393-5211

HOUSTON, TEXAS
6610 Harwin Dr.
Suite 152
Phone: 713-781-6850
Phone: 713-781-0600

KILGORE, TEXAS
P. O. Box 871
Phone: 214-984-3875

LOS ANGELES, CALIFORNIA
3435 Wilshire Blvd.
Suite 2214
Phone: 213-487-1660

NATCHEZ, MISSISSIPPI
P. O. Box 804
Phone: 601-445-4691

NEW ORLEANS, LOUISIANA
P. O. Box 73373
Metairie, Louisiana
Phone: 504-885-2841

NEW YORK, NEW YORK
100 Menlo Park Office Bldg.
Room 408
Edison, New Jersey
Phone: 201-549-1023

ODESSA, TEXAS
1020 West 2nd St.
P. O. Box 1632
Phone: 915-337-8649

OKLAHOMA CITY, OKLAHOMA
600 S.E. 29th St.
P. O. Box 95205
Phone: 405-632-2366

PAMPA, TEXAS
P. O. Box 2212
Phone: 806-665-4120

PITTSBURGH, PENNSYLVANIA
Suite 101
201 Penn Center Blvd.
Phone: 412-241-5131

SAN FRANCISCO, CALIFORNIA
5318 Eggers Drive
Fremont, California
Phone: 415-793-3911

SEATTLE, WASHINGTON
10703 Durland Ave., N.E.
Phone: 206-364-9658

TULSA, OKLAHOMA
1302 Petroleum Club Bldg.
Phone: 918-587-7171

LUFKIN OVERSEAS CORP., S.A.
ANACO, VENEZUELA
Apartado 23
Phone: MGO 2-4405

MARACAIBO, VENEZUELA
Apartado 1144
Phone: 29102

BUENOS AIRES, ARGENTINA
Esmeralda 155
Piso 7
Phone: 45-4822

LONDON, ENGLAND
123 Pall Mall, Suite 18
Phone: 01-930-2662

SINGAPORE
126 Eng Neo Ave.
Phone: 634479

EXECUTIVE OFFICES & FACTORY
Lufkin, Texas 75901
P. O. Box 849
Phone: 713-634-4421

C. D. Richards, Vice President
and Sales Manager

W. W. Trout, Jr., Asst.
Sales Manager

TRAILER DIVISION SALES AND SERVICE OFFICES

ATLANTA, GEORGIA
1313 Sylvan Road, S. W.
Phone: 404-755-6681

BIRMINGHAM, ALABAMA
3700 10th Ave., North
Phone: 205-592-8164

DALLAS, TEXAS
635 Fort Worth Ave.
Phone: 214-742-2471

HOUSTON, TEXAS
2815 Navigation Blvd.
Phone: 225-0241

JACKSON, MISSISSIPPI
Highway 80 East
P. O. Box 6035
Phone: 601-939-7822

KANSAS CITY, KANSAS
347 N. James St.
P. O. Box 2455
Phone: 913-281-5800

LUBBOCK, TEXAS
709 Slaton Hwy.
P. O. Box 188
Phone: 806-747-1631

MEMPHIS, TENNESSEE
1947 E. Brooks Road
P. O. Box 16309
Phone: 901-397-9382

NASHVILLE, TENNESSEE
2705 Mossdale Dr.
Phone: 615-889-2502

NEW ORLEANS, LOUISIANA
1835 West Bank Expressway
Harvey, Louisiana
Phone: 504-362-7575

OKLAHOMA CITY, OKLAHOMA
1315 West Reno
P. O. Box 82596
Phone: 405-236-3687

SAN ANTONIO, TEXAS
3343 Roosevelt Ave.
Phone: 512-924-5117

SHREVEPORT, LOUISIANA
U. S. Highway 80, East
P. O. Box 5473, Bossier City
Phone: 318-746-4636

EXECUTIVE OFFICES & FACTORY
Lufkin, Texas 75901
P. O. Box 848
Phone: 713-634-4421

C. W. Alexander,
Vice-President

Marshall Dailey, Fleet Sales
Jim Horn, Mgr.-Branches



— All Photos Courtesy Oregon State Highway, Travel Division, Salem

COLORFUL Deschutes River wends its way through its rocky canyon in its upper reaches near Redmond, Oregon. Three Sisters Peaks are its backdrop

OREGON'S Volcanic Drive

By Shirley Parenteau

If the boulder-strewn, sagebrush-decked cattle country of Bend, Oregon, looks familiar, you may have seen it in such movies as "The Indian Fighter," with Kirk Douglas, or "Tonka," by Walt Disney. Or you may have seen the rugged countryside on TV as the background for Richard Boone's series, "Have Gun, Will Travel."

Early pioneers knew this area intimately. They brought their wagons creaking through the hot sands of high desert country to the east and rested gratefully on the cool banks of the Deschutes River. From here, they were to tackle treacherous, snow-slashed mountains of the Cascade Range. They plotted their westward course from Pilot Butte, a 511-foot cinder cone, and named the green curve of the Deschutes River, "Farewell Bend," before moving on.

Today, the name has been post office-shortened to Bend and Pilot Butte is a State Park on the eastern city limits. You drive up and around the cinder cone to stand in the footprints of the pioneers for a sweeping panorama of mountain peaks 10,000 feet and more in height. The view is far more inviting to the sportsman of today than to the pioneers. Tucked within those peaks and valleys are more than 100 lakes and 300 miles of fishing streams, all within 59 miles of Bend.

Also within a few miles of Bend is a geologist's playground of volcanic oddities. The nearest is Arnold Ice Cave, where early settlers cut ice for their cabin chests. A red-cinder road east of U.S. Highway 97, four miles south of Bend, takes you to Arnold Cave, Wind Cave and Skeleton Cave. All are tubes formed when rivers of lava poured through this area, cooling on the outside while the center moved on.

Ten miles south of Bend, a half-mile road winds west around and up the bare sides of a 500-foot cinder cone called Lava Butte. A fire look-out perched on the rim of a 150-foot crater offers a spectacular view of mountains and volcanism. Pines, deep within the crater, reach slim tops toward the sun. West are the glacier-clad Three

Sisters. Pioneers named them "Faith, Hope and Charity." Nearby are Broken-Top, Three Fingered Jack and Mount Jefferson. The red mesa rim of the high desert stretches far eastward, while south, the jagged pinnacles of Smith Rock scrape the sky.

Follow the Brogan Trail, at the base of Lava Butte, to see the source of a 10-mile-square of lava flow, one of the most awesome in America. Carbon dating places the flow within the last 2,000 years.

Indian artifacts show that early men watched in awe as Bachelor Butte, Lava Butte and other cones burst into violent eruption. Blazing forests and earth fires made an inferno while spatter cones near Lava Butte shot lava bursts into the sky.



MANY MILES of fishing streams tempt anglers to scenic spots near Bend, such as Tumalo Falls

OREGON'S Volcanic Drive

Ridges of the fallen lava can be seen today.

Lava River Caves State Park is two miles further south. You don't have to be a spelunker to rent a lantern from the park official on duty from May to September and explore the lava tunnel which stretches under U. S. Highway 97, back beneath lava fields for nearly a mile. After climbing wooden stairs over entrance rocks, you step onto the floor of a large, cool chamber where stalagmites and stalactites of ice last into June. Stairs lead upward into a great tunnel with a ceiling 59 feet high in places. Conversation echoes eerily. Swaying lanterns flash pools of light over glazed walls 50 feet apart. Slaggy crusts and overhanging shelves mark levels of the river of lava which ran through ago.

Delicate sand gardens form a surprising end to the tunnel. Watch, as drops of water falling into a 25-foot depth of sand etch delicate pinnacles, pillars and gulches. The miniature erosion sculptures change as certainly as mountains and streams change in the world above.

One mile south and ten miles east, is the largest forest of lava cast trees known on the continent. A parking area exhibit, showing various kinds of

lava found in the area, explains that slow-moving lava flowed into an ancient forest and chilled around the trees. When the bulk of lava flowed on, a stone coating remained. Eventually, charred wood rotted away, leaving the spectral molds which stand above the lava today. The lava cast trees reach 10 to twenty feet into the lava to the original surface of the earth. Prone casts as long as fifty feet have been discovered.

Roads and trails into the stone forest are being improved under the U. S. Forest Service multiple use program. Trails are fair, though slow-going because of the rough surface. A unique feature of the Deschutes Lava Cast Forest is the imprint of pine bark which can be traced in the lava. Occasional chunks of charcoal from lava-burned trees are still visible in the stone molds. The search for still-undiscovered tree molds is a hazardous, but fascinating sport. Be sure to wear walking shoes when you explore this area.

Fourteen miles south of the Lava Cast Forest, a road turns east to Newberry Crater, a 10-mile wide base of a dormant, once 10,000-foot volcano and hidden retreat of Paiute raider, Chief Paulina. Lava spilling from the side caused the mountain's col-



ELK LAKE is one of many jewel-like stops on Oregon's beautiful Cascade Lake Highway. South Sister Mountain forms a rugged background



LAVA RIVER Caves mile-long lava tube lures visitors deep within lava-formed passageways

lapse near the end of the Ice Age. Some 200 cinder cones built up within the caldera and along the slopes, dividing the crater to form East Lake and Paulina Lake. The lakes have been planted with trout since 1910, when fish were carried in on pack horses. Both are very popular fishing lakes today with resorts and campgrounds along their forested shores.

Paulina Lake's outlet, Paulina Creek, tumbles over lovely 65-foot Paulina Creek Falls near an observation point along the road, close to the first campground. A second viewpoint, on the eastern edge of Paulina Lake, offers a view of a great swirled obsidian flow which spilled from a vent high in the crater. A glossy fan-like curtain of black glass drapes the inner crater wall in one of the most extensive flows of volcanic glass on the continent. You may find arrowheads, chipped from the obsidian, along the lake shores.

A good road takes you to Deschutes National Forest fire lookout on 7,985-foot Paulina Peak, for a magnificent view of parts of four states and the Cascade Mountain Range of Oregon. There are four forest camps along Paulina Lake, two of them

reached by trail only, and three forest camps along the road on the south and east sides of East Lake.

Famed Century Drive has been called Oregon's most beautiful highway. Recently renamed Cascade Lakes Highway, the nearly-100 miles of paved road can be reached from Bend or from Highway 97 near Newberry Crater. The drive carries you through an artist's paradise of pine woods and wildflower meadows, tumbling creeks and forest-sheltered lakes, lofty mountains and jumbled fields of lava, cinder cones, pumice flats and gleaming obsidian cliffs.

Twenty-two miles from Bend, a towering gateway pass carries you up and between 7,772-foot Tumalo Mountain and 9,060-foot Bachelor Butte, A Fujiyama-like cinder cone with a popular skiing area and summer chairlift ride. The highway climbs beyond the mountain walls and into a cool forest where Forest Service campgrounds face jewel-like lakes.

Camping the alpine-lake wilderness or exploring the rugged volcanic country is an unforgettable experience. Bend is considered by many to be one of the most scenic and geologically interesting areas on the continent.



MORE UPRIGHT and prone tree casts have been found in Deschutes Lava Cast Forest than anywhere in the USA



ANCIENT LAVA beds offer stark contrast to two of the Three Sisters gleaming with winter snow

HERE AND THERE WITH LUFKIN GEARS



TYPICAL late model Ecodyne Cooling Tower is serving Northern States Power's 545-MW Monticello Nuclear plant on the Mississippi River. Twin 9-cell towers have cooling capacity of 290,000 gallons per minute. Cooled water from the installation is funneled to the Mississippi River via a 1,000-foot discharge canal. It also can be recycled back to the plant directly.



LUFKIN Model "FH" Speed Reducer is an exclusive Ecodyne Cooling Products Company design completely assembled with fan hub, unitized steel support and electric motor. LUFKIN manufactures five sizes in a wide range of ratios and horsepower for Ecodyne.

The new Ecodyne Cooling Products Company speed reducer meets AGMA standards, and eliminates the requirements for a drive shaft, second coupling, pillow blocks and support. Maintenance is easy because the exclusive Ecodyne Cooling Products Company speed reducer has only five major parts. Drive is maintained through a close coupled, totally enclosed motor through flexible coupling. Bearing life is 100,000 hours. The motor mounts directly beneath the speed reducer, and both motor and gear units are supported by the same unitized steel support, assuring permanent coupling alignment.

THIS IS another typical Ecodyne Cooling Products Company cooling tower. This installation is a 10-cell crossflow mechanical draft tower providing a cooling capability of 99,000 gallons per minute. It is one of three installations for Utah Power and Light Company's Naughton steam generating plant at Kemmerer, Wyoming.



LUFKIN Model D250-S Reducer is an important link in an engine-gear-pump assembly which produces 31,000 gallons per minute to supply 75 per cent of the water needs of the City of Riverside, California. It is operated by the Public Utilities Department, Iowa Booster Station. Gear rating is 646 horsepower, 1000 RPM input speed and 500 RPM to the pump.



LUFKIN N2405-C High Speed Gear Increasesers, five in a row, transmitting 2000 horsepower each from "Enterprise" engines, Model HVP-8 cylinders, 600 RPM, 165 B.M.E.P. manufactured by DeLaval Engine Compressor Division, Oakland, California. Driven are United Centrifugal Pump Company's multi-stage, split case pumps, 3600 RPM. Two additional units are at another field location, for a total of seven assemblies. These Units were installed recently by Signal Oil & Gas Company at their Huntington Beach, California, lease.

Each engine-gear-pump assembly is capable of injecting 60,000 barrels of water per day at 1500 PSI. Projected are three additional assemblies now on order. This is said to be one of the world's largest water floods, operated independently. Signal will be injecting up to 600,000 barrels per day into the "Main Zone" and 200,000 barrels per day into the "Jones" zone, totaling 800,000 barrels per day.



SNAPSHOTS



HIRO MIFUNE, United Centrifugal Pump Company, City of Industry, California



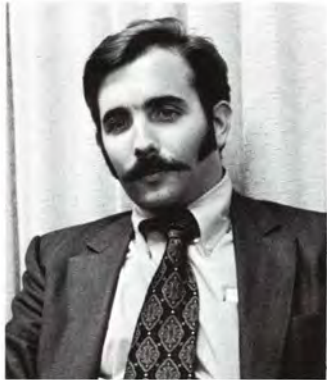
DON PEASE, De Laval Turbine California, Inc., City of Commerce, California



JOHN NOEL, De Laval Turbine California, Inc., City of Commerce, California



DINO FLOKAS, Byron Jackson Pumps Div., Borg-Warner Corp., Vernon, California



ANDY POLNY, De Laval Turbine, Inc., City of Commerce, California



CHARLES HOWELL, Waukesha Engine Servicer, Inc., Compton, California



MANUAL CARWANA, Bingham-Willamette Company, Long Beach, California



HAROLD DARUS, Waukesha Engine Servicer, Inc. Compton, California



OTIS CRABTREE, Waukesha Engine Servicer, Inc. Compton, California



ARNOLD SINGER, Bingham-Willamette Company, Long Beach, California



EDWARD WEIS, Ecodyne Corporation, Ecodyne Cooling Products, Company, Santa Rosa, California

BY LUFKIN CAMERAMEN



H. W. (BILL) BREWSTER,
Ecodyne Corporation,
Ecodyne Cooling Products
Company, Santa Rosa,
California



WILLIAM McNEIL
Ecodyne Corporation,
Ecodyne Cooling Products
Company, Santa Rosa,
California



E. M. (GENE) SMITH,
Ecodyne Corporation,
Ecodyne Cooling Products
Company, Santa Rosa,
California



DALE W. BLANTON,
Ecodyne Corporation,
Ecodyne Cooling Products
Company, Santa Rosa,
California



J. F. FORCHINI,
Ecodyne Corporation
Ecodyne Cooling Products
Company, Santa Rosa,
California



H. W. STONEBRAKER,
Ecodyne Corporation,
Ecodyne Cooling Products
Company, Santa Rosa,
California



RICHARD E. JENKINS,
Ecodyne Corporation,
Ecodyne Cooling Products
Company, Santa Rosa,
California



R. J. NANULA,
Ecodyne Corporation,
Ecodyne Cooling Products
Company, Santa Rosa,
California



DONN B. FURLONG,
Ecodyne Corporation,
Ecodyne Cooling Products,
Company, Santa Rosa,
California



A. M. KUEHMSTED,
Ecodyne Corporation,
Ecodyne Cooling Products
Company, Santa Rosa,
California



S. L. (CHUCK) HARRIS,
Public Utilities Dept.,
City of Riverside, Calif.

LUFKIN INST



1



2



3



4



5



6



7



8



9

- 9
- 1 LUFKIN
part
- 2 LUFKIN
part
- 3 LUFKIN
ern
Cal
- 4 LUFKIN
ern
Uni
- 5 LUFKIN
por

TALLATIONS



7



8



9



10

- 1 LUFKIN C-228D-117-144 Unit, Getty Oil Company, Bakersfield, California.
- 2 LUFKIN C-640D-304-144 Unit, Shell Oil Company, Bakersfield, California.
- 3 LUFKIN A-1824D-240-47 Unit, Chanslor-Western Oil and Development Company, Rincon, California.
- 4 LUFKIN M-456D-253-144 Unit, Chanslor-Western Oil and Development Company, Torrance Unit, Torrance, California.
- 5 LUFKIN C-912D-305-168 Unit, Mobil Oil Corporation, Wilmington, California.

- 6 TWO LUFKIN C-456D-256-120 Units, Signal Oil & Gas Company, Huntington Beach, California.
- 7 LUFKIN A-912D-192-42 Unit, Continental Oil Company, Ventura, California.
- 8 LUFKIN M-912-305-192 Unit, Tenneco Oil Company, Bakersfield, California.
- 9 LUFKIN A-2560D-240-47 Unit, Corporacion Venezolana del Petroleo, Boscan Field, near Maracaibo, Venezuela.
- 10 LUFKIN A-1280D-192-42 Unit, Getty Oil Company, Ventura, California.

MORE SNAPSHOTS



BILL DENKE,
Chanslor-Western
Oil &
Development Co.,
Ventura,
California



M. L. BENSON,
Texaco, Inc.,
Los Angeles,
California



**DON
SHOENBERGER,**
Texaco, Inc.,
Los Angeles,
California



CHET CARNINE,
Chanslor-Western
Oil &
Development Co.,
Ventura,
California



LEE WARD,
Texaco, Inc.,
Los Angeles,
California



W. M. DIMOCK,
Shell Oil
Company,
Los Angeles,
California



BOB SOWERS,
Getty Oil
Company,
Los Angeles,
California



HUGH CALLAN,
Union Oil
Company of
California
Los Angeles,
California



DON CHAFFEE,
Signal Oil & Gas
Company,
Huntington Beach,
California



Left to right: **RAMON OMANA,** Cia Shell de Venezuela, Caracas; **ERNESTO FRANJOSA,** Creole Petroleum Corp., Caracas; and **WLADIMIRO KOVALCHUK,** Creole Petroleum Corp, Tia Juana, Venezuela



BERNIE LYONS,
Signal Oil & Gas
Company,
Huntington Beach,
California



BILL CUNDIFF,
Standard Oil
Company,
Oxnard, California



PHIL COOK,
California State
Lands Division,
Long Beach,
California



**MR. and MRS.
BOB MANGOLD,**
Reserve Oil &
Gas Company,
Bakersfield,
California



**MIKE MACY, left,
and BOB SHORE,**
both with Getty
Oil Company,
Bakersfield,
California



JOSH THORP,
left, Getty Oil
Company, Los
Angeles; **DICK
COUCH, LUFKIN,**
Bakersfield, Calif.



AL HORN,
Standard Oil Co.
of California,
San Francisco,
California



LLOYD SMITH,
Getty Oil
Company,
Bakersfield,
California



Left to right, **VANE SUTER,**
Union Oil Co. of California,
Santa Fe Springs,
California; **CARL FRAZER,**
LUFKIN, Los Angeles;
MRS. VANE SUTER



JOE WINTER,
Tenneco Oil
Company,
Bakersfield,
California



Left to right, **MR. and MRS. JOHN
MATTHEWS,** California Division Oil
& Gas, Sacramento, California; **MR.
and MRS. BILL OWENS,** Union Oil
Co. of California, Los Angeles



NICK VAN WINGEN, left, Consultant,
Pasadena, California; **ED ZINSER,**
Union Oil Co. of California,
Bakersfield, California



**MIKE KELLY, left, and GARY
PRIDDY,** both with Getty Oil
Company, Bakersfield, California

by the Lufkin Cameramen



LEE CECIL,
Tenneco Oil
Company,
Bakersfield,
California



BOB DOUGLASS,
Tenneco Oil
Company,
Bakersfield,
California



O. E. (BUD) KARR,
Signal Oil & Gas
Company,
Bakersfield,
California



EUGENE
NICHOLS,
Atlantic Richfield
Oil Company,
Bakersfield,
California



JON CRAWFORD,
Signal Oil & Gas
Company,
Bakersfield,
California



JERRY WASICEK,
Union Oil Co. of
California,
Bakersfield,
California



SAM CURTIS, left, LUFKIN, and JESUS LACHMANN, Corporacion Venezolana del Petroleo, both at Maracaibo, Venez.



DAN WEAVER,
Pumping Unit
Repair,
Bakersfield,
California



HUGH SWAN,
Tenneco Oil
Company,
Bakersfield,
California



CHARLES
THREEWIT,
Union Oil Co.
of California,
Bakersfield,
California



BOB TAYLOR,
Tenneco Oil
Company,
Bakersfield,
California



TRAVIS
HENDRICK,
Shell Oil
Company,
Bakersfield,
California



PERRY
TEYMOURIAN
Mobil Oil
Corporation,
Bakersfield,
California



VIC FAWCETT, left, LUFKIN, Los Angeles; DAVE HAYWARD, California State Lands Division, Long Beach, California



CARL FRAZER, left, LUFKIN, Los Angeles, California; LARRY CHASTEEN, Union Oil Company, Los Angeles



JIM WILLIAMS,
Standard
Oil Company,
Bakersfield,
California



BUD KNICK,
Union Oil Co.
of California,
Bakersfield,
California



TERRY HURST,
Getty Oil
Company,
Bakersfield,
California



MR. and MRS. LLOYD SMITH,
Getty Oil Company, Bakersfield,
California



DICK SLOAN, left, Tenneco Oil Company, Bakersfield, California; NORBERT METHVEN, Oil Base Inc., Houston, Texas



DAVE BOWERS, left, and JOHN DAVIS, both with Getty Oil Company, Bakersfield, California



TERRY DITMORE,
Getty Oil
Company,
Bakersfield,
California

WHEN THE CANE WAS RIPE



The season for harvesting sugar cane in El Salvador was not too far in the future when a breakdown occurred in the sugar mill of La Cabana, S. A.

The trouble lay in an old steam engine driving the mill drive. It was wrecked beyond repair, and La Cabana decided to re-power with a steam turbine.

The Company ordered a LUFKIN NT 1824 Unit, a 1000 horsepower turbine driven, 4500 RPM input, 70 RPM output, 1.7 service factor unit to drive a 3-roll sugar mill.

The urgency of the situation was underscored by the fact that LUFKIN's sugar mill agent in New Orleans, Factory Sales & Engineering Company, on La Cabana's instructions, chartered a Hercules L-100 plane from Southern Air Transport in Miami, Florida, to air freight the gear from New Orleans to El Salvador.

The gross weight of the LUFKIN gear crated for shipment was 27,000 pounds and measured 133 inches by 95 inches by 88 inches, making it at the time of shipment last October the heaviest single crate ever air freighted out of New Orleans International Airport. The cost to ship the unit approximated \$10,000.

The plane left New Orleans at 5:30 a.m. and arrived in El Salvador four hours later.

When the cane was ripe, LUFKIN and La Cabana, S. A. were ready to grind it into pulp for the making of sugar.

LUFKIN's NT 1824 Gear, when crated for air shipment, weighed 27,000 pounds. This was the heaviest single crate ever to be air freighted from New Orleans International Airport



After being loaded into the belly of a Hercules L-100 transport, the LUFKIN gear was flown to El Salvador in four hours

The AEC Came to Lufkin

A Lufkin Industries pumping unit played a unique role in the Atomic Energy Commission's "Cannikin" nuclear underground test on Amchitka Island, Alaska.

A 90-inch diameter hole, cased to 54 inches, was drilled to a depth of approximately 6000 feet. At the bottom of this access shaft a 52-foot spherical cavity was mined to contain the nuclear device. About 150 feet away a 9 $\frac{5}{8}$ -inch de-watering hole was drilled, connected at the bottom of the access shaft by a 6-foot diameter horizontal tunnel. The big LUFKIN pumping unit was installed on this de-watering hole to pump water as it accumulated in the underground complex.

The critical time was when the nuclear device was lowered and the access shaft sealed. It was imperative that water be prevented from rising into the cavity.

The AEC chose the LUFKIN unit as a fail-safe

mechanical standby for the vital job of pumping up to 52 gallons of water per minute from the detonation cavity.

The A-1824D-240-47 unit, manufactured by Lufkin Industries, Inc., Lufkin, Texas, was selected because the nuclear test would have proven ineffective if a pumping device had failed at the critical moment it was needed.

The LUFKIN unit chosen for the job is the largest pumping unit structure in the world. The peak torque capacity of the gear reducer is 1,824,000-inch pounds. It has a 240-inch stroke and the polished rod capacity is 47,000 pounds.

Weighing almost 80,000 pounds, it was also the largest pumping unit ever air freighted to location. The unit was flown to Amchitka from Kelley Air Force Base, San Antonio, Texas, which has a runway long enough to accommodate the huge plane.



At left is the LUFKIN Air Balanced pumping unit on location at the Atomic Energy Commission's recent "Cannikin" nuclear underground test on Amchitka Island, Alaska. The rig in the background was used to drill the access shaft leading to the detonation cavity.

LUFKIN'S PACIFIC COAST DIVISION



ROBERT W. JEFFS
Seattle, Washington



W. C. SHERMAN
Northwest
District Mgr.
San Francisco



DICK COUCH
Bakersfield, California



CARL FRAZER, JR.
Oilfield Division
Machinery Mgr.
Los Angeles



V. J. FAWCETT
Gear Division Mgr.
Los Angeles



Lufkin Laffs

Meladonia Melarkin has told her maw she is perfectly safe with her boy friend in his new car, since he has chastity belts on both seats.

Old Jaydee sure is wrapped up in his business . . . practically lives at the office . . . even got a night shift secretary!

Texan: "I want a bra for my wife."
Girl Clerk: "You want a Latex?"
Texan: "Ain't got time, mam, double-parked."

The Englishman said: "Why does he walk so slowly while the others run so fast?"

His friend replied: "Because he got four balls."

The Englishman thought a moment and then mused: "By Jove, that WOULD slow him down a bit, wouldn't it?"

She drank a bottle of body lotion . . . thought it might get rid of a little chap . . .

All some girls know about cooking is how to bring a man to a boil.

Bill got far too close to a winch
And was caught in the crotch by its pinch!

Everyone near deplored
While he hollered and roared
As his sex life went West, inch by inch!

Three traveling salesmen were discussing cuisines around the country. One said, "Every time I go to Philadelphia I get scrapple." Another said, "Every time I go to New Orleans I get pompano." The third said, "Every time I go to Boston, I get scrod."

The first salesman thought a minute and finally said, "So do I, but I never knew the plural of it before."

A farmer came home late one night and caught a traveling salesman in bed with his wife. The farmer knocked the salesman out cold and when he came to, he discovered himself in the barn, where the farmer had tightly clamped his little dove the girls all loved in a big vise, nailed to the bench, and the handle of the vise was gone!

Looking around, he saw the farmer sharpening a large knife. "Ye gods, you're not going to cut it off!" cried the salesman.

"No," said the farmer, "You can do that . . . I'm going to set the barn on fire!"

The route to a man's heart hasn't changed much since mother was a girl, but the detours are much more interesting now . . .

Susie Catchall, one of our buyers, says when she goes to a convention, what she likes is a double room next to a single man.

She married a moron . . . moron than off.

Night baseball: When the man of the house is out, at home, and another guy is there trying to get to first base.

New Game: Fertility Roulette. Shake up five aspirins and a birth control pill in a hat and let your girl friend pick one . . .

It's easy to grin when your ship comes in

And you've got the stock market beat . . .

But the man worthwhile
Is the one who can smile

When his shorts are too tight in the seat.

He called his Plymouth the Mayflower . . . because many a little puritan came across in it.

In looking over all these girls in pants, wouldn't you say that very few ends justify the jeans?

The only gentlemen who really prefer blondes are the ones who don't know how to defrost brunettes.

The farm boy was taking his girl for a buggy ride one night when the horse dropped dead. Being an opportunist, the farm boy went to work at making out with the girl.

"Come on, baby," he pleaded, "This will give you a wonderful new life."

And she answered, "If it'll do that, try it on the horse and let's get going!"

The women in the community gave the beatnik bride a shower . . . and boy, did she need one!

Sally, the silly secretary, says of one thing she's certain . . . neither man nor machine can take her place . . .

A certain senator had to go to New York for a meeting, and he wanted to take along some Washington female companionship. He invited the girl he'd been seeing for a long time, and when she acted like she might not be entirely opposed to the idea, he waxed eloquent.

"I have senatorial immunity," he pleaded, "so you needn't be afraid of the Mann Act!"

She giggled. "Afraid of it!" she cried, "why, Senator, I just love it!"

No wonder love is intoxicating . . . it's a lot of moonshine made in the still of the night.

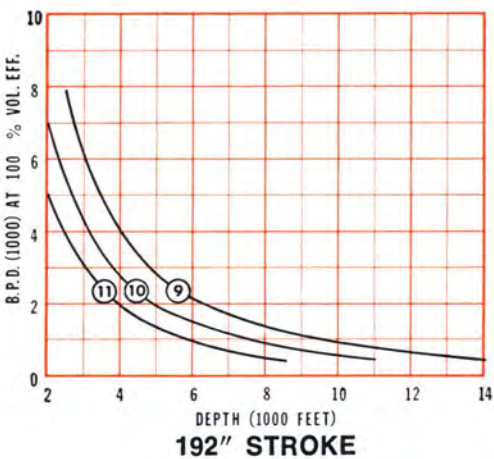
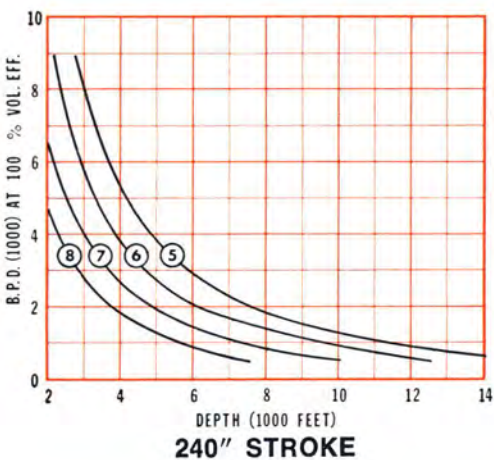
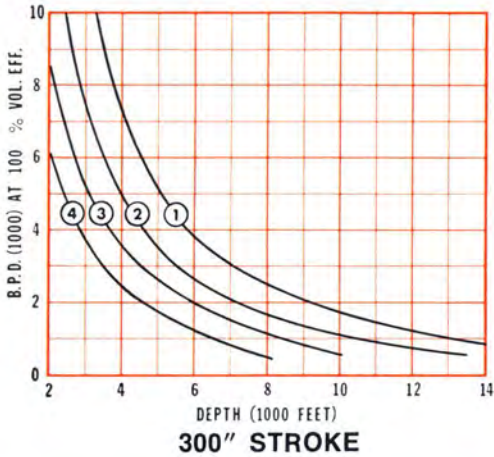
The policeman said, "You've got a runner in your stocking, miss."

"Heaven's above!" exclaimed the girl.

"I know," said the cop, "but I'm on duty."

LUFKIN HI-V Series

HIGH VOLUME AIR BALANCED PUMPING UNITS



- 1 A-3648D-300-55
- 2 A-2560D-300-47
- 3 A-1824D-300-47
- 4 A-1280D-300-47
- 5 A-2560D-240-47
- 6 A-1824D-240-47
- 7 A-1280D-240-47
- 8 A-912D-240-47
- 9 A-1824D-192-42
- 10 A-1280D-192-42
- 11 A-912D-192-42



FIELD PROVEN TO BE THE MOST ECONOMICAL ANSWER TO HIGH VOLUME PUMPING PROBLEMS.

Only LUFKIN offers sucker rod pumping units with stroke lengths, polished rod capacities, and torque ratings capable of producing the big volume of fluid required in modern day artificial lift systems. $1\frac{1}{4}$ " sucker rods are available.

For complete details contact your nearest Lufkin Sales Representative.

YOU CAN RELAX WHEN IT'S LUFKIN EQUIPPED



Export Offices
1108 C & I Building
Houston, Texas 77002
Phone: 713-225-1855
Cable Address—LUFFO, Houston

LUFKIN INDUSTRIES, INC.
LUFKIN, TEXAS