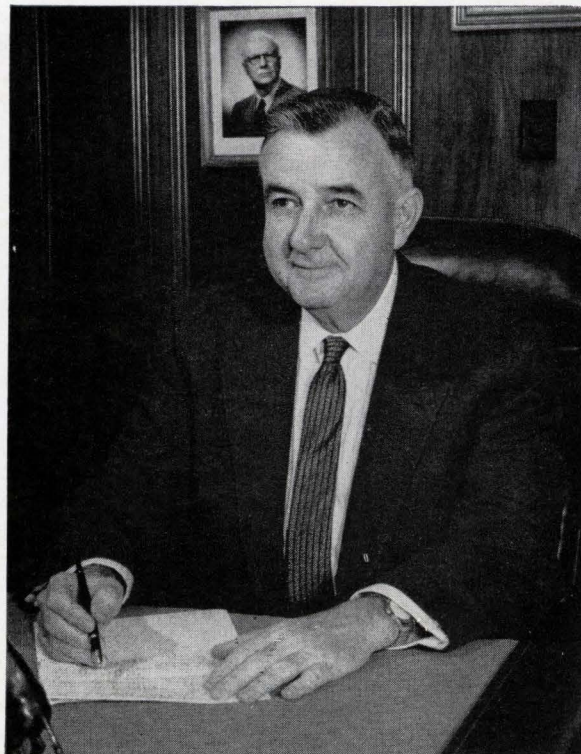


The Foundry Roundup

AUGUST, 1964



from the President's Desk . . .



IT gives me a great deal of pleasure to announce the creation of the Lufkin Foundry and Machine Company Educational and Charitable Foundation.

This is a non-profit organization and will operate as the name indicates in two areas, namely: in donating to charity and in the awarding of college scholarships.

The following people have been selected to serve as Trustees of the Foundation:

W. A. Kirkland

Robert Lang

W. W. Trout

L. A. Little

C. J. Schuller

Carl Liese

R. E. Barr

Bayo Hopper

E. P. Trout

One of the first projects of the Foundation is a college scholarship plan which is outlined on the following pages. This plan is effective immediately and application for the three \$2,000 scholarships may be made not later than October 1, 1964. It is my hope that this scholarship plan may be expanded in the near future.

Should you have questions concerning the scholarship plan, please contact any of the Trustees who will be happy to furnish you additional information.

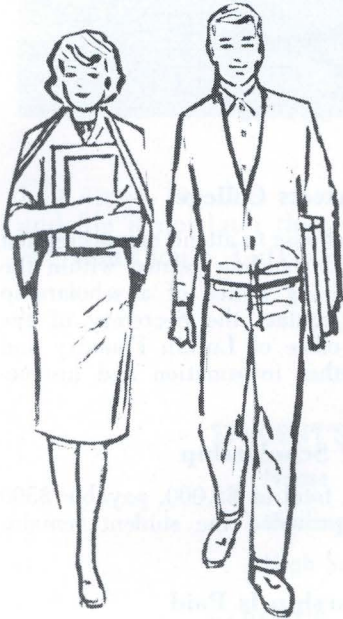
W. W. TROUT

COLLEGE SCHOLARSHIP PLAN

FOR CHILDREN OF EMPLOYEES OF
LUFKIN FOUNDRY & MACHINE COMPANY

FROM THE

LUFKIN FOUNDRY & MACHINE COMPANY
EDUCATIONAL & CHARITABLE FOUNDATION



EDITOR'S NOTE: The following information about the College Scholarship Plan of the Company's Educational and Charitable Foundation is being published exclusively by THE FOUNDRY ROUNDUP. It is suggested that parents file this issue of the magazine in a permanent file so that it may be referred to in the years to come. It is not now planned to publish this information in separate booklets or other media.)

Number of Scholarships

Three scholarships are awarded under this plan each year; however, a lesser number will be awarded if there are fewer than three eligible recipients.

Students Eligible To Apply

A high school student who has a parent who has been an employee of Lufkin Foundry and Machine Company in its Lufkin, Texas, Office or Plant for at least one year when the student registers for the senior year in high school, is eligible to apply for this scholarship. A student whose employee-parent becomes totally incapacitated, retires, or deceases at any time during such student's tenure in high school is eligible to apply provided the parent had been an employee of Lufkin Foundry for at least two years prior to such incapacity, retirement or decease. A student whose parent is an officer of the company at the time such student registers for the senior year in high school is not eligible.

Purpose of Scholarship

The purpose of this scholarship is to express an interest in the families of Lufkin Foundry employees and to help create greater interest in higher education.

When To Apply

The time to apply for a Foundation scholarship is when the student registers for the senior year in high school.

How To Apply

A student can apply for a Foundation scholarship by completing an application form and filing it with the Angelina County School Superintendent, County Courthouse, Lufkin, Texas. The application form with a 9th, 10th, and 11th grade transcript attached must be filed with the Angelina County School Superintendent not later than October 1 following registration for the senior year in high school. An application form can be obtained from the student's principal or from the Angelina County School Superintendent.

High School Grade Required

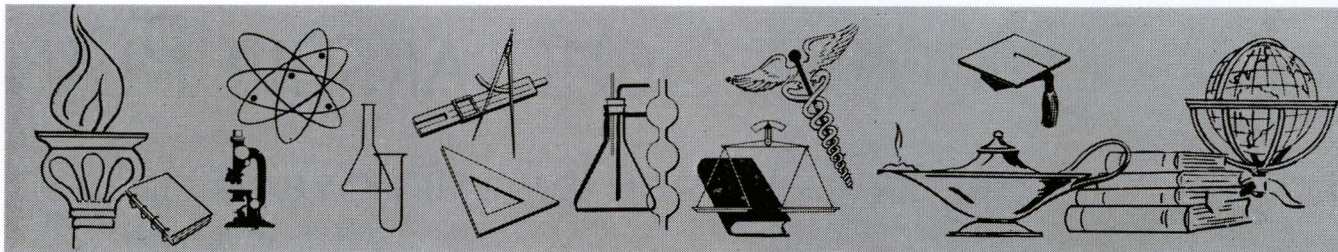
To be eligible to be considered for a scholarship, a student must graduate from an accredited high school, and the student's grades for the four high school years must average at least 80.

College Board Entrance Test Required

Not later than January 31 in the senior year of high school, scholarship applicants will take the Scholastic Aptitude Test of the College Board Entrance Examination. Not later than April 1, applicants will file with the Angelina County School Superintendent (1) a report of the results of the Scholastic Aptitude Test, and (2) a transcript of the first semester grades of the senior year in high school.

Scholarship Committee

Each year the Foundation will appoint a Scholarship Committee which will evaluate the qualifications of the applicants and select the winners. The Angelina County School Superintendent will not be a member of the committee, and no officer or employee of Lufkin Foundry will be a member of the committee.



Qualifications To Be Considered

Each applicant will be graded on the following qualifications:

- I. Scholarship in its broadest sense
 - A. Grades made in high school
 - B. Grades made on College Board Entrance Test
 - C. Probability of success in college
 - D. Probable utilization of college education
- II. Character
 - A. Ambition
 - B. Reputation
 - C. Fairness in judgment
 - D. Respect for rights of others
 - E. Personal stability
- III. Citizenship
 - A. Health
 - B. Personality
 - C. Disposition
 - D. Qualities of leadership
 - E. Cooperation with fellow students and teachers
 - F. Willingness to be of service

In arriving at the student's over-all grade, the grade made upon each of the three above-listed qualifications will be weighed as follows:

Scholarship 65%, Character 20%, and Citizenship 15%.

Announcement of Awards

The Scholarship Committee will receive from the Angelina County School Superintendent (1) on or about October 1 the application forms and (2) on or about April 1 the results of the Scholastic Aptitude Test and transcripts of the first semester grades of the senior year in high school. Based upon this information, and such other information as may be obtained, the Scholarship Committee, prior to the end of the school year, will determine which of the applicants are to receive the scholarships. The Scholarship Committee will then submit the names of the scholarship recipients to the Lufkin Foundry and Machine Company, which, in turn, will make appropriate announcement.

Students Selects College

Scholarship students may choose to attend any accredited college or university in good standing located within the State of Texas. Upon receiving notice of a scholarship award, the student should contact the Secretary of the Foundation, located at the office of Lufkin Foundry and Machine Company, for further information and instructions.

Amount of Scholarship

Each scholarship is for a total of \$2,000, payable \$500 per year for four years, provided the student remains eligible.

How Scholarship Is Paid

A \$500 payment is scheduled to be made at the beginning of the first semester of each of the four school years. The payment is made by check to the college or university selected by the student and approved by the Foundation.

Cancellation of Scholarship

If a student attending college on a scholarship fails to maintain satisfactory grades, or misses a fall or spring semester for a reason other than illness or military service, the scholarship will be cancelled and no further payment made. An absence of two years from college, regardless of the reason, will terminate eligibility. A college to which funds have been advanced for a student who subsequently becomes ineligible should return unused funds to the Lufkin Foundry Foundation.

Awards Made Only To Eligible Applicants

An award will be made only when there is an eligible applicant, and any of the three annual awards that are not made due to the lack of an eligible applicant will be cancelled and will not be carried forward.

Scholarship Creates No Obligations

The awarding of a scholarship does not constitute an offer of employment, and the acceptance of a scholarship does not create any employment obligations. Acceptance of a scholarship award in no way obligates the recipient to the Foundation nor the Foundation to the recipient.

Duration of Scholarship Plan

The Lufkin Foundry and Machine Company Educational and Charitable Foundation believes that this scholarship plan may be continued indefinitely. Yet, it also realizes that conditions may change in the future, and therefore, reserves the right to modify or terminate the Plan, in whole or in part, in such manner as it may determine.

APPLICATION

LUFKIN FOUNDRY AND MACHINE COMPANY EDUCATIONAL & CHARITABLE FOUNDATION COLLEGE SCHOLARSHIP

For The Children of Employees at Lufkin Foundry & Machine Co.

(To apply for this scholarship, fill out this form when registering for the senior year of High School, and file it not later than October 1 following registration with the Angelina County School Superintendent, Courthouse, Lufkin, Texas. Attach a 9th, 10th, and 11th grade transcript.)

_____ Date

STUDENT'S:

Name (Give full name): _____

Mailing Address: _____

High School Being Attended: _____

PARENT'S:

Name: _____

Date Employed by Lufkin Foundry & Machine Co.: _____

Date of Death, Retirement, or Incapacity, if Applicable: _____

I am aware that it is required that I take the Scholastic Aptitude Test of the College Board Entrance Examination not later than January 31 (check): _____

I am aware that it is required that I file with the Angelina County School Superintendent not later than April 1 (1) a report of the results of Scholastic Aptitude Test, and (2) a transcript of my grades made in the first semester of the senior year in high school (check): _____

I am aware that an over-all high school grade average of 80 is the minimum requirement for eligibility (check): _____

My general health is (check one): Good _____:
Average _____: Poor _____.

Extra-curricular Activities (list school clubs or organizations to which you have belonged, offices held, any special honors received, etc.):

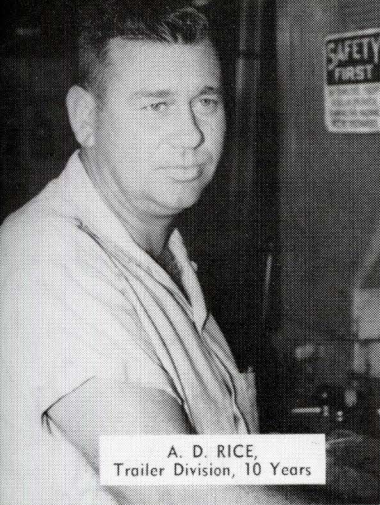
Out-of-school Activities (list out-of-school clubs or organizations to which you have belonged, offices held, any special honors received, etc.):

Presently, I plan to attend the following college or university if I receive this scholarship:

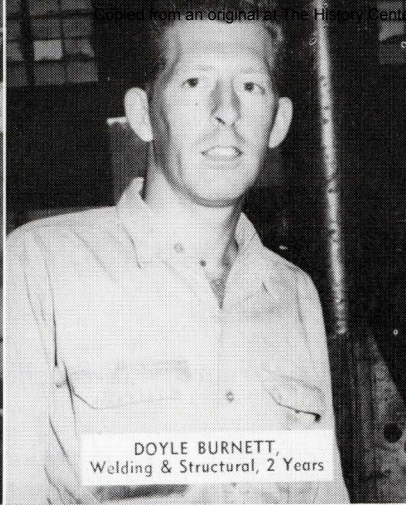
First Choice: _____

Second Choice: _____

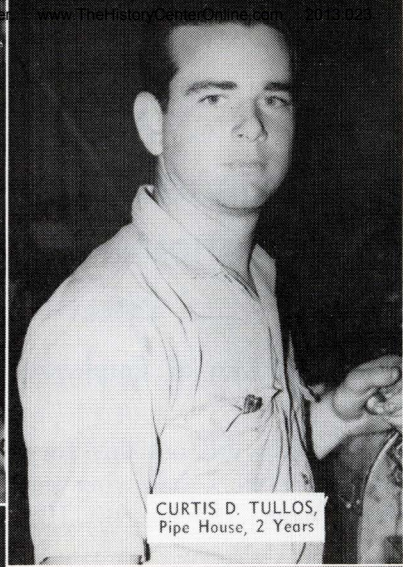
Student's Signature



A. D. RICE,
Trailer Division, 10 Years



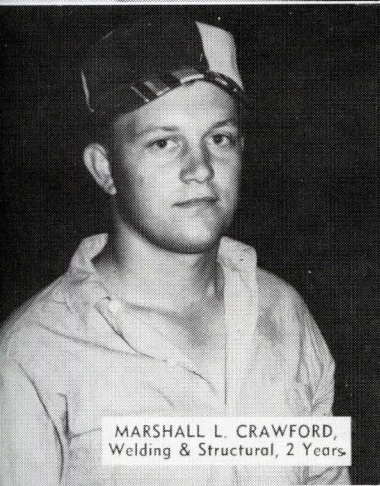
DOYLE BURNETT,
Welding & Structural, 2 Years



CURTIS D. TULLOS,
Pipe House, 2 Years



BETTY ROACH,
Trailer Division, 8 Years

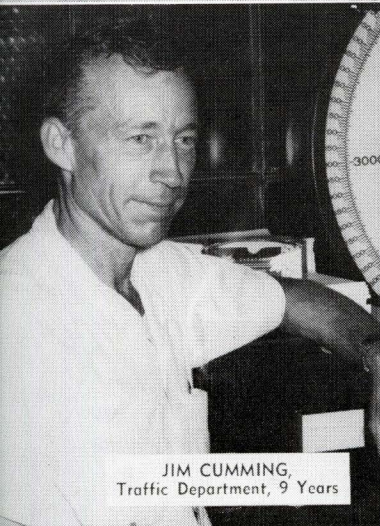


MARSHALL L. CRAWFORD,
Welding & Structural, 2 Years

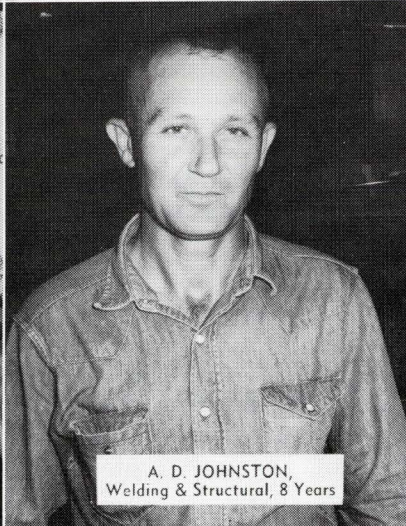


KATHERINE LUKER,
Trailer Division, 8 Years

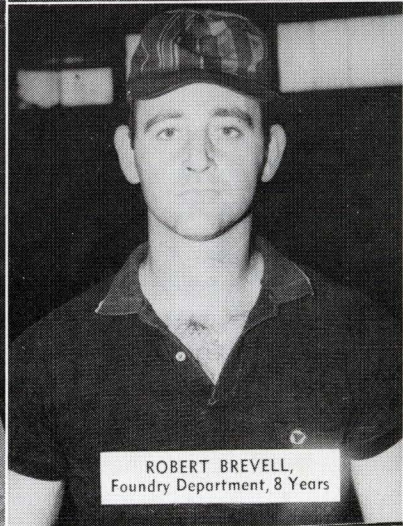
Celebrating an Anniversary
2 TO 12 YEARS



JIM CUMMING,
Traffic Department, 9 Years



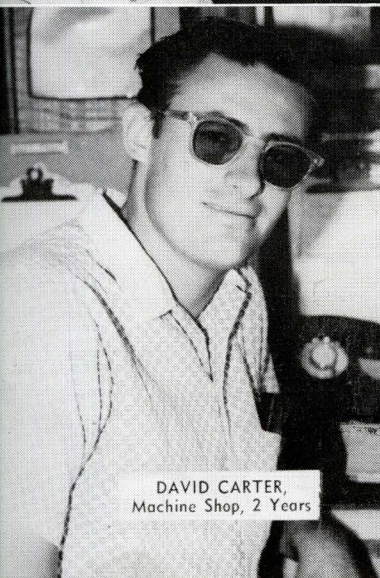
A. D. JOHNSTON,
Welding & Structural, 8 Years



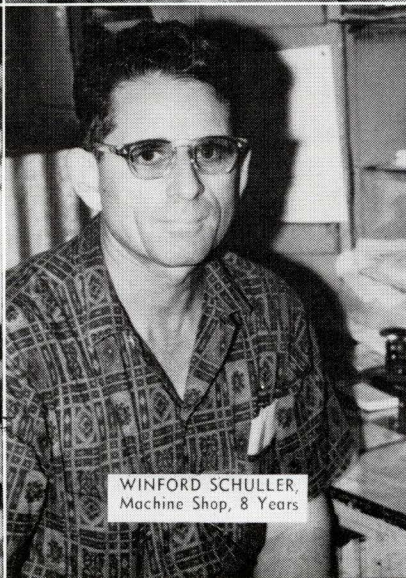
ROBERT BREVELL,
Foundry Department, 8 Years



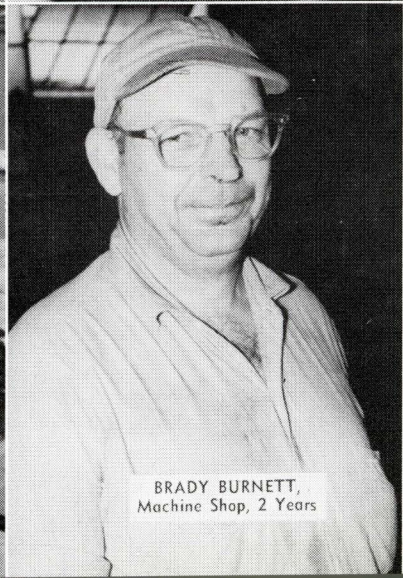
PATSY METCALF,
Main Office, 2 Years



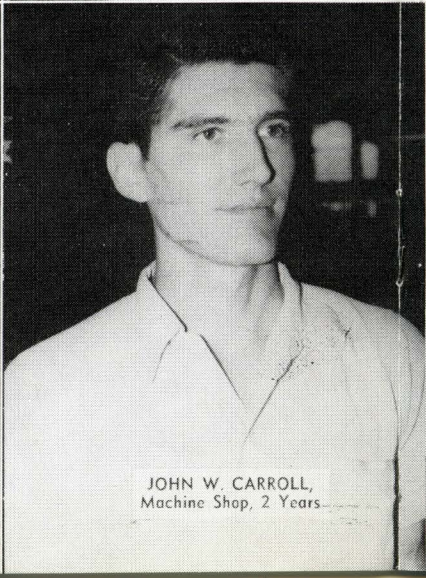
DAVID CARTER,
Machine Shop, 2 Years



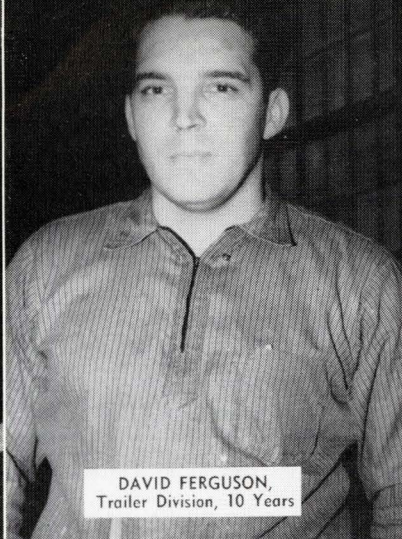
WINFORD SCHULLER,
Machine Shop, 8 Years



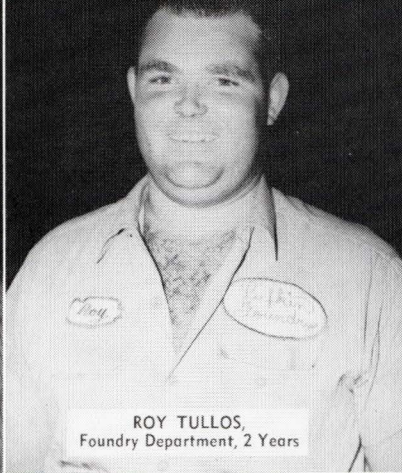
BRADY BURNETT,
Machine Shop, 2 Years



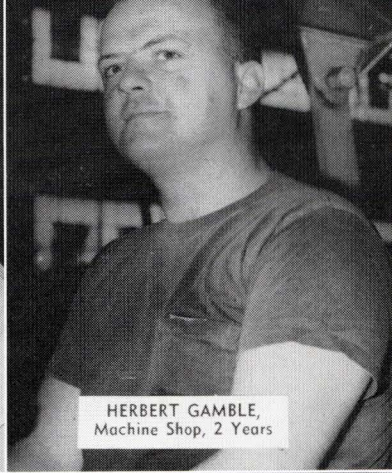
JOHN W. CARROLL,
Machine Shop, 2 Years



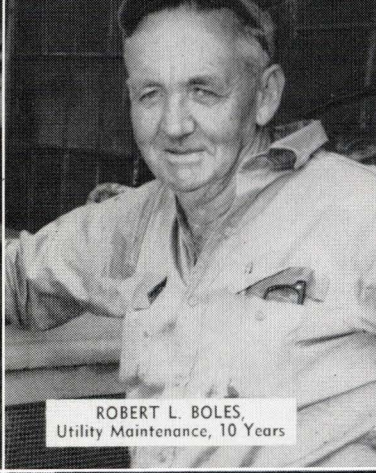
DAVID FERGUSON,
Trailer Division, 10 Years



ROY TULLOS,
Foundry Department, 2 Years

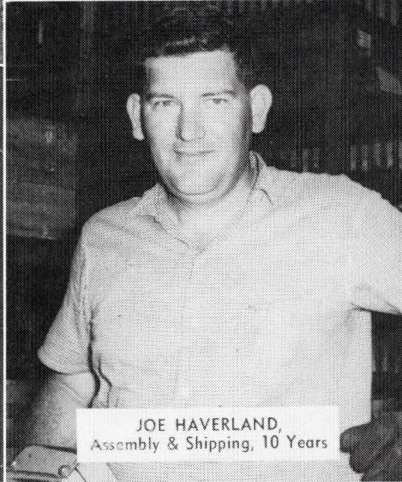


HERBERT GAMBLE,
Machine Shop, 2 Years

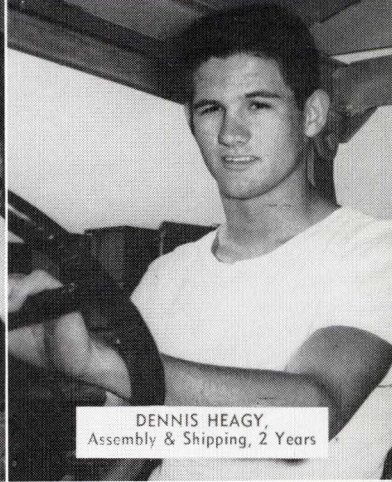


ROBERT L. BOLES,
Utility Maintenance, 10 Years

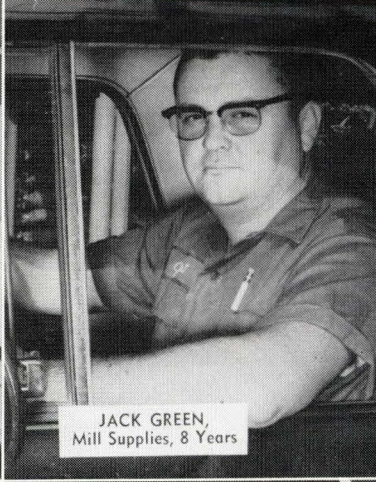
Anniversary ARS



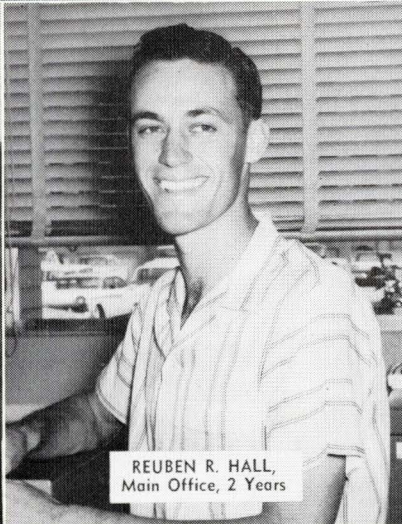
JOE HAVERLAND,
Assembly & Shipping, 10 Years



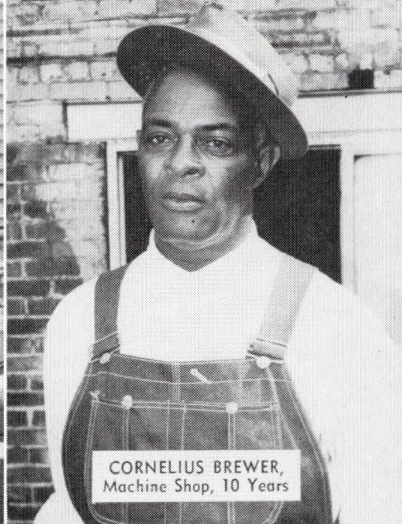
DENNIS HEAGY,
Assembly & Shipping, 2 Years



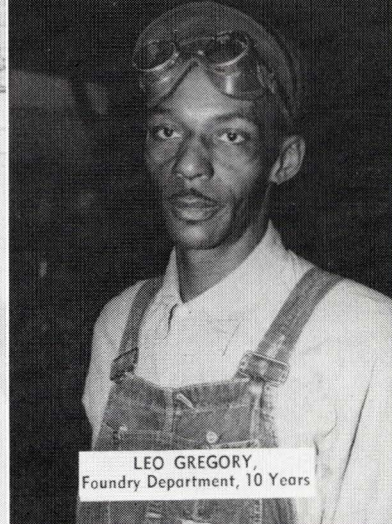
JACK GREEN,
Mill Supplies, 8 Years



REUBEN R. HALL,
Main Office, 2 Years



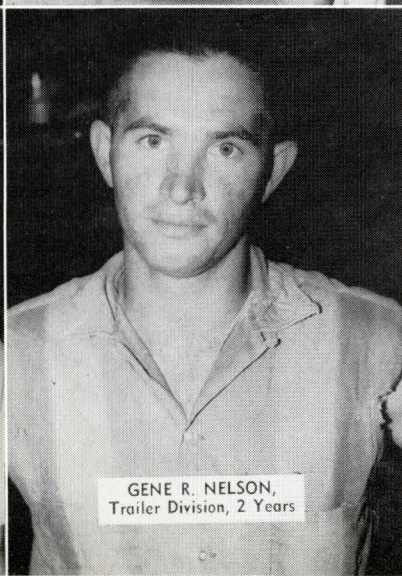
CORNELIUS BREWER,
Machine Shop, 10 Years



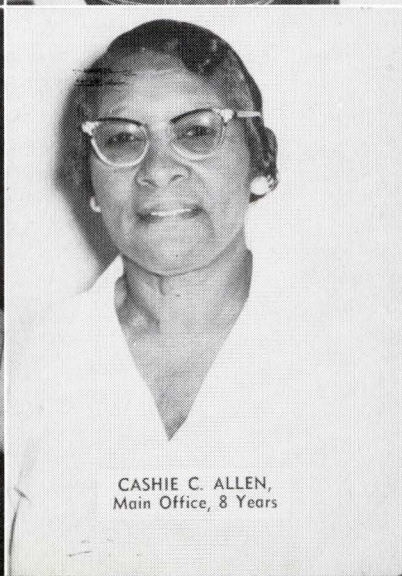
LEO GREGORY,
Foundry Department, 10 Years



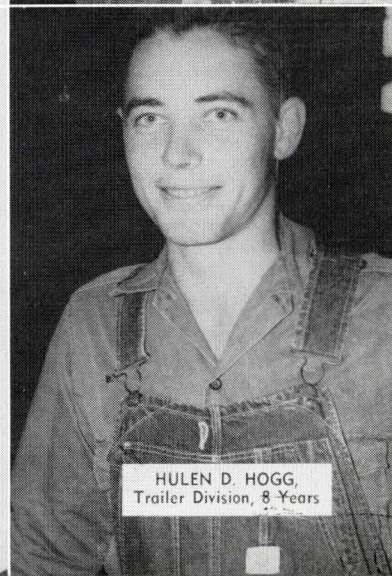
JAMES THOMAS,
Machine Shop, 6 Years



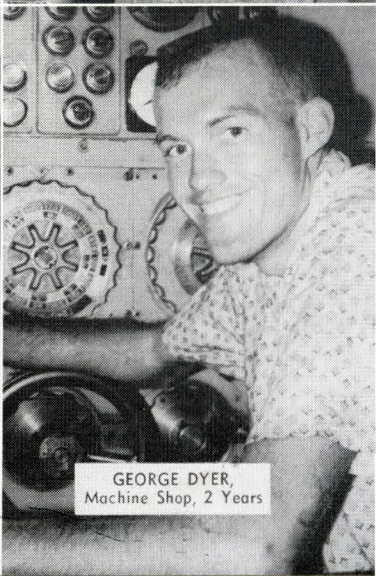
GENE R. NELSON,
Trailer Division, 2 Years



CASHIE C. ALLEN,
Main Office, 8 Years



HULEN D. HOGG,
Trailer Division, 8 Years



GEORGE DYER,
Machine Shop, 2 Years



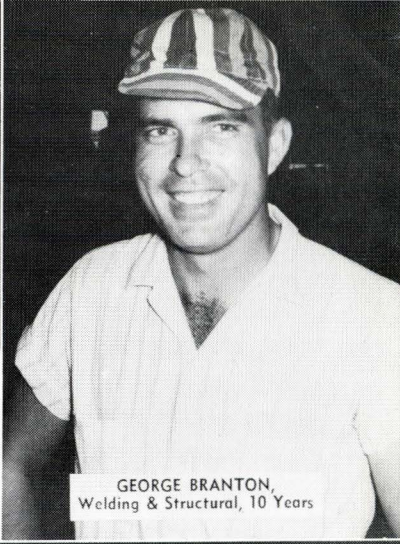
JERRY MIKE WATSON,
Machine Shop, 2 Years



LEONARD AVERY,
Machine Shop, 9 Years



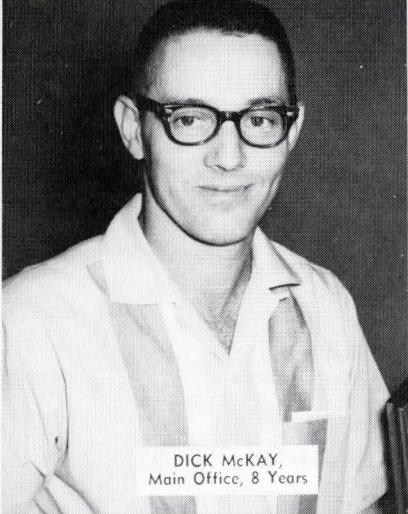
CHARLIE JUMPER,
Welding & Structural, 5 Years



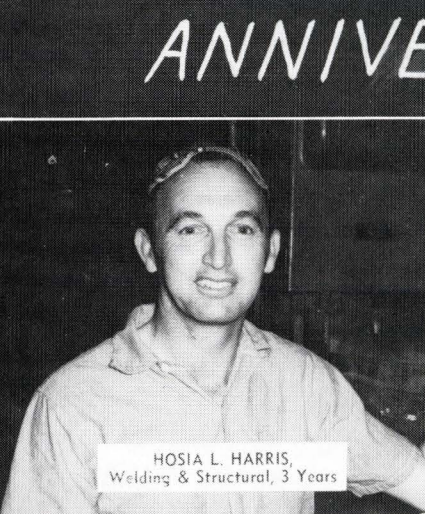
GEORGE BRANTON,
Welding & Structural, 10 Years



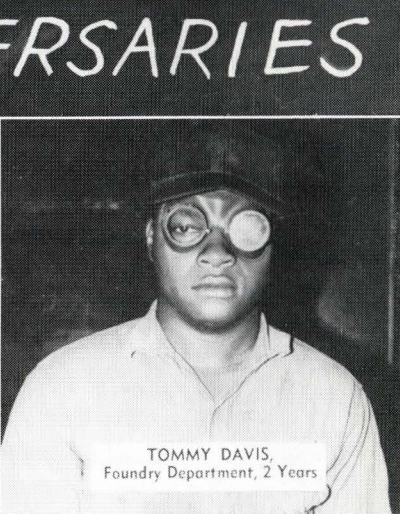
OLEN McMULLEN,
Foundry Department, 9 Years



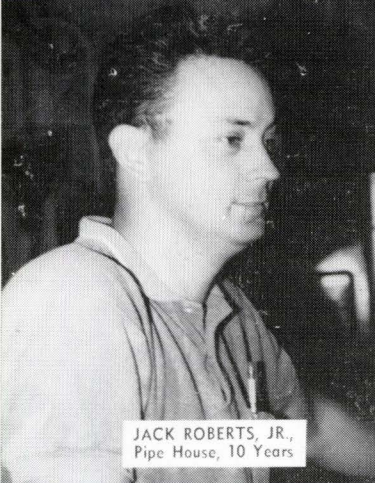
DICK McKay,
Main Office, 8 Years



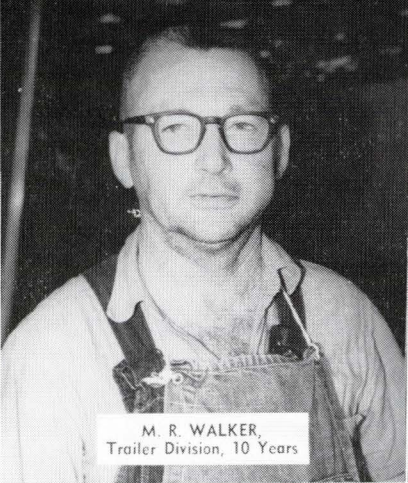
HOSIA L. HARRIS,
Welding & Structural, 3 Years



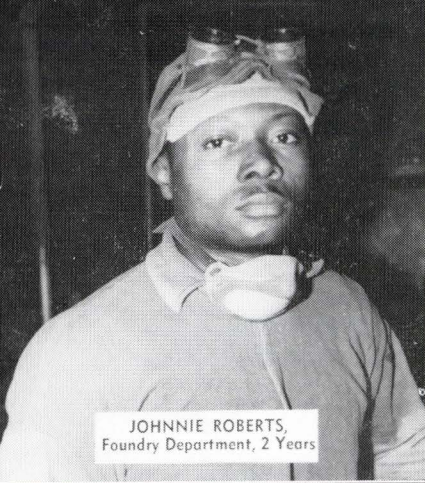
TOMMY DAVIS,
Foundry Department, 2 Years



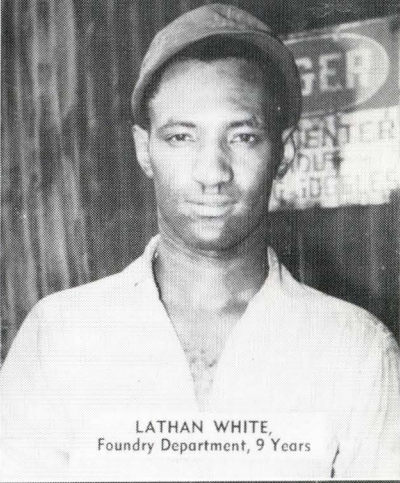
JACK ROBERTS, JR.,
Pipe House, 10 Years



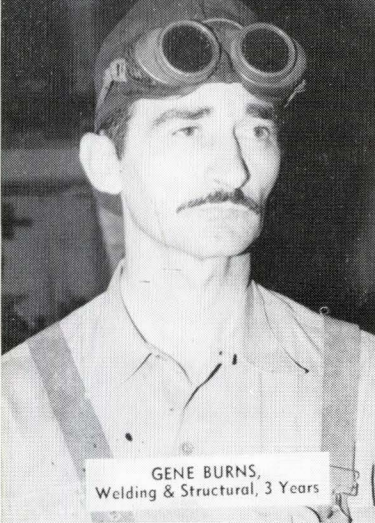
M. R. WALKER,
Trailer Division, 10 Years



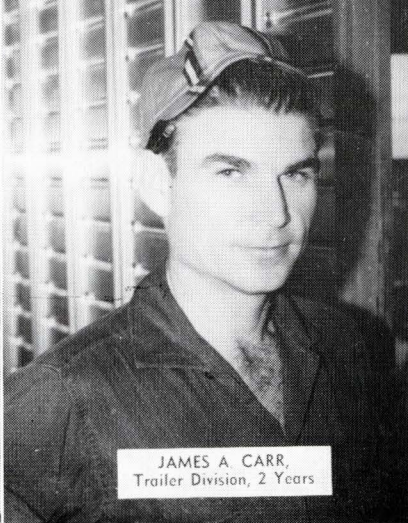
JOHNNIE ROBERTS,
Foundry Department, 2 Years



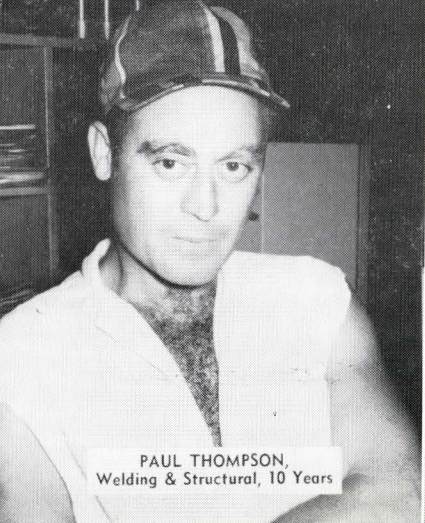
LATHAN WHITE,
Foundry Department, 9 Years



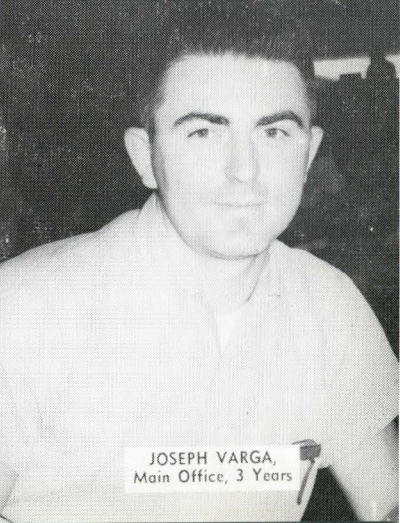
GENE BURNS,
Welding & Structural, 3 Years



JAMES A. CARR,
Trailer Division, 2 Years

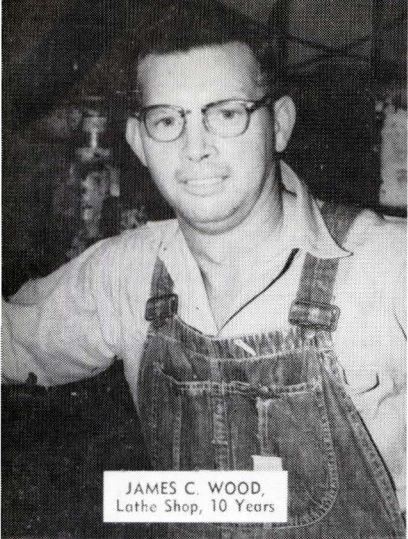


PAUL THOMPSON,
Welding & Structural, 10 Years



JOSEPH VARGA,
Main Office, 3 Years

ANNIVERSARIES



JAMES C. WOOD,
Lathe Shop, 10 Years



GENE NEAL HAVARD,
Machine Shop, 2 Years

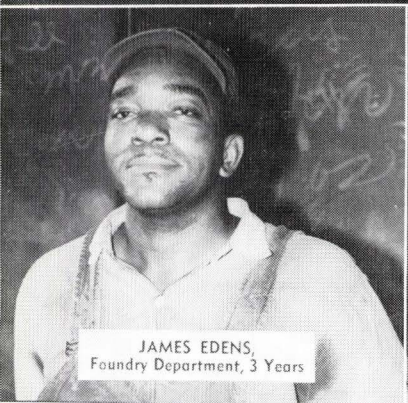


JOHN R. SMITH,
Machine Shop, 9 Years



BILLY JOE HOLIDAY,
Machine Shop, 9 Years

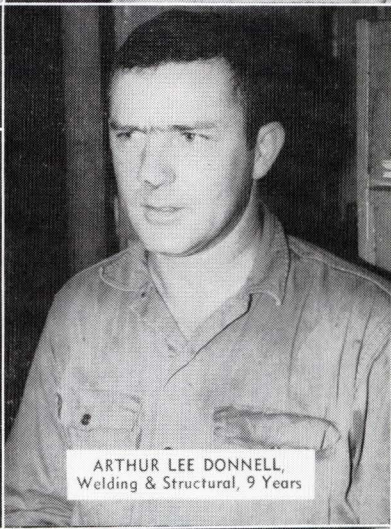
CONTINUED...



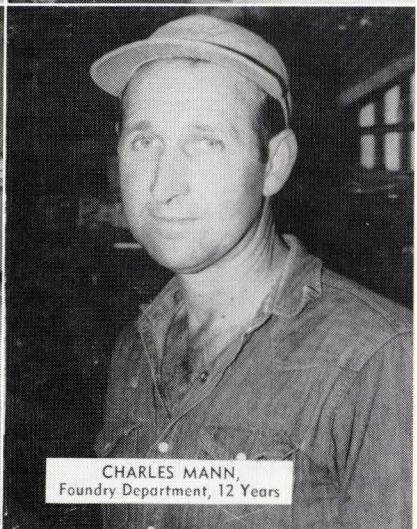
JAMES EDENS,
Foundry Department, 3 Years



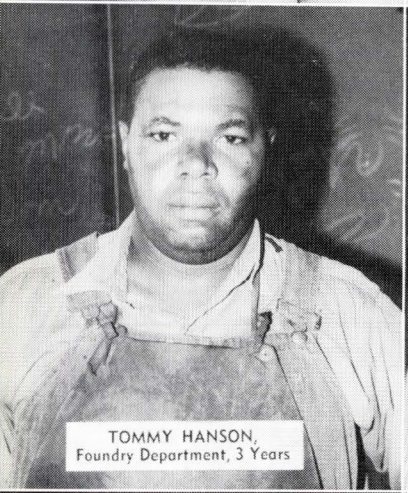
FRANK HOWARD TATE,
Pattern Shop, 3 Years



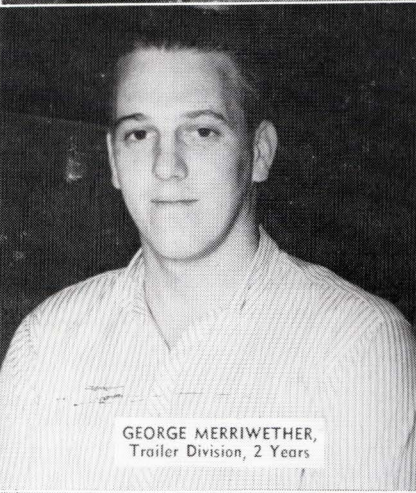
ARTHUR LEE DONNELL,
Welding & Structural, 9 Years



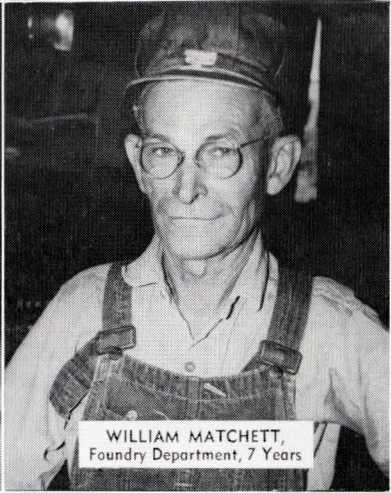
CHARLES MANN,
Foundry Department, 12 Years



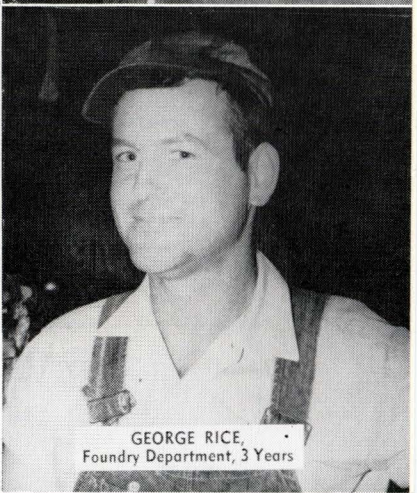
TOMMY HANSON,
Foundry Department, 3 Years



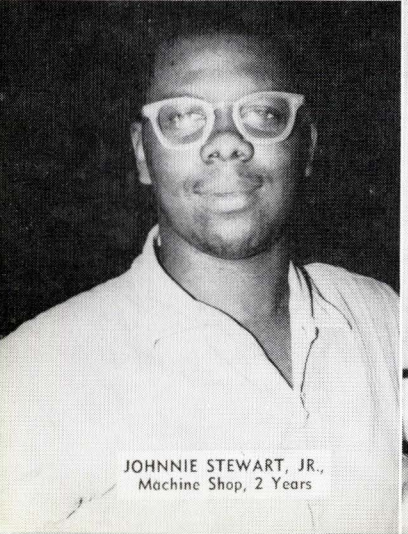
GEORGE MERRIWETHER,
Trailer Division, 2 Years



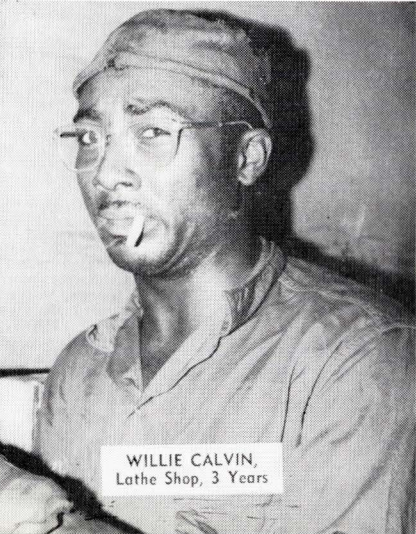
WILLIAM MATCHETT,
Foundry Department, 7 Years



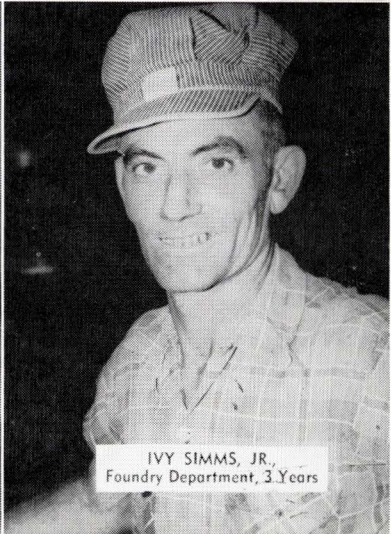
GEORGE RICE,
Foundry Department, 3 Years



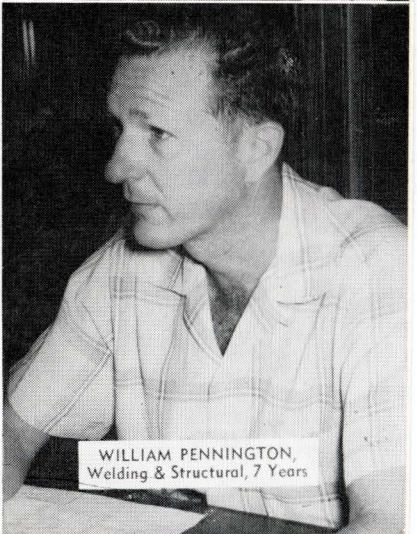
JOHNNIE STEWART, JR.,
Machine Shop, 2 Years



WILLIE CALVIN,
Lathe Shop, 3 Years



IVY SIMMS, JR.,
Foundry Department, 3 Years



WILLIAM PENNINGTON,
Welding & Structural, 7 Years



AL. E. CUDLIPP, SR.

MONDAY night, August 3, 1964, Al. E. Cudlipp, Sr. suffered a fatal heart attack as he and his wife were celebrating their 46th Wedding Anniversary with some friends.

Thus death took from Lufkin Foundry and Machine Company a loyal and devoted employee, an incomparable friend and a man whose contributions to many phases of life are innumerable.

Mr. Cudlipp was only 19 years of age when he came to Lufkin in May,

1919, to begin work in the Order Department of our Company. Soon he was made assistant to my Father, the late W. C. Trout who was operating officer of this Company for 42 years.

In 1943, Mr. Cudlipp was made Vice President in charge of Advertising, Purchasing and the Mill Supplies Division, and was elected a Director of the Company on February 8, 1945.

He had countless friends in the lumber industry throughout the United States, and only two years ago he was

honored by the Texas Forest Service renaming its Lufkin headquarters the Cudlipp Forestry Center.

When Lufkin Foundry purchased the Martin Wagon Company in 1939, Mr. Cudlipp was personally interested in this field and directed his energies toward the trucking industry. From these endeavors, he was associated with members of the trucking industry across the nation.

Mr. Cudlipp's influence upon the continuing success of this Company is immeasurable. Many times during World War II and the years immediately following when steel and other strategic materials were rationed, this plant was operated on short hours or full time dependent upon the success he had in Washington getting the various bureaus to allocate material to us.

His counsel and leadership will be sorely missed. His contributions to the civic life of this community will be irreplaceable. His friendship, good humor and priceless wit will be an irrecoverable loss to many, many people.

But we all are the richer because he walked among us for 45 years.

W. W. TROUT

MARKING AN ANNIVERSARY

MACHINE SHOP

	Employment Date	Years With Co.
Charley Gault	August 12, 1918	46
Robert L. Butler	August 28, 1929	35
J. R. Nutt, Jr.	August 30, 1935	29
Gene Chastain	August 2, 1937	27
Carl L. Williams	August 6, 1941	23
Harvey Jackson	August 8, 1941	23
Horace Z. Askins	August 25, 1941	23
G. C. Lafferty, Jr.	August 29, 1941	23
William C. Weems	August 17, 1942	21
Archie W. Hopson	August 11, 1943	21
William V. Petty	August 16, 1943	21
Fayette Havard	August 27, 1943	21
Charles Daniel	August 23, 1944	20
Joe W. Bailey	August 7, 1945	19
Henry C. Finley	August 24, 1945	19
Arthur Burris	August 14, 1947	17
Charles L. Campbell	August 7, 1950	14
D. L. Scarborough	August 2, 1950	14
R. B. Allred	August 7, 1950	14
Billie D. Kelley	August 7, 1950	14
William Howard Love	August 7, 1950	14
Smithie Reeves	August 8, 1950	14
Reid Gaddy	August 9, 1950	14
W. D. McWilliams	August 11, 1950	14
J. D. Pitts	August 15, 1950	14
Leslie H. Midgley	August 16, 1950	14
George R. Gilliland	August 22, 1950	14
Ernest R. Midgley	August 29, 1950	14
Joe E. Haverland	August 2, 1954	10
Cornelius Brewer	August 2, 1954	10
James C. Wood	August 3, 1954	10
Robert L. Boles	August 17, 1954	10
Jack Roberts, Jr.	August 30, 1954	10

John R. Smith	August 19, 1955	9
Billy Joe Holiday	August 24, 1955	9
Leonard H. Avery	August 29, 1955	9
Winford A. Schuller	August 20, 1956	8
James B. Thomas	August 25, 1958	6
Willie Calvin	August 10, 1961	3
George L. Dyer	August 9, 1962	2
Brady M. Burnett	August 10, 1962	2
John W. Carroll	August 13, 1962	2
Gene Neal Havard	August 23, 1962	2
Jerry Mike Watson	August 24, 1962	2
Curtis D. Tullos	August 24, 1962	2
David L. Carter	August 27, 1962	2
Dennis Z. Heagy	August 27, 1962	2
Herbert C. Gamble	August 27, 1962	2
Johannie Stewart, Jr.	August 30, 1962	2
Fred Conway	August 7, 1963	1
Edwin A. Tullos	August 8, 1963	1
Robert E. Bass, III	August 8, 1963	1

TRAILER DIVISION

Employment Date	Years With Co.	
O. B. Barrington	August 10, 1943	21
Gus Lynch	August 2, 1944	20
Ernie M. Willhite	August 14, 1950	14
Burl Russell	August 23, 1950	14
Charles F. Austin	August 24, 1950	14
Connellee Bishop	August 28, 1950	14
Tom Shoemaker	August 29, 1950	14
J. E. Watson	August 5, 1954	10
David Ferguson	August 16, 1954	10
Archie D. Rice	August 23, 1954	10
M. R. Walker	August 31, 1954	10
Hulen D. Hogg	August 2, 1956	8
Betty Roach	August 20, 1956	8
Katherine Luker	August 27, 1956	8
Judy Lynn Eldridge	August 15, 1962	2
George Merriwether	August 20, 1962	2
James A. Carr	August 27, 1962	2
Gene R. Nelson	August 27, 1962	2
Freddie B. Fowler	August 1, 1963	1
B. G. Holman	August 19, 1963	1
Calvert C. Olds	August 20, 1963	1

WELDING & STRUCTURAL

Employment Date	Years With Co.	
P. P. Stringer	August 11, 1941	23
John D. Edwards	August 14, 1941	23
R. O. Kendrick	August 21, 1941	23
Maurice Malone	August 28, 1941	23
Marvin G. Powell	August 28, 1941	23
James B. Parnell	August 25, 1948	16
William M. Williams	August 1, 1950	14
Edward Brock	August 1, 1950	14
Robert J. Walker	August 1, 1950	14
Carl L. Thompson	August 3, 1950	14
Silous S. Russell	August 7, 1950	14
James E. Oates	August 17, 1950	14
Winfred Tullos	August 22, 1950	14
Leonard E. Modisette	August 23, 1950	14
G. W. Kirkland	August 23, 1950	14
Paul Thompson	August 9, 1954	10
George A. Branton	August 23, 1954	10
Arthur Lee Donnell	August 12, 1955	9
A. D. Johnston	August 27, 1956	7
W. E. Pennington	August 1, 1957	7
Charlie W. Jumper	August 20, 1959	5
James E. Landrum	August 26, 1959	5
Hosia L. Harris	August 18, 1961	3
Gene J. Burns	August 23, 1961	3
Doyle G. Burnett	August 22, 1962	2
Marshall L. Crawford	August 30, 1962	2
U. A. Holland	August 8, 1963	1

FOUNDRY DEPARTMENT

Employment Date	Years With Co.	
Wilom Menefee	August 27, 1941	23
Earl Thompson	August 9, 1943	21
William Thorn	August 13, 1945	19
E. A. Mixon	August 13, 1945	19
Izere Murphy	August 17, 1945	19
A. J. Modisette	August 7, 1947	17
James C. Evans	August 30, 1947	17
W. B. Clifton	August 11, 1948	16
Jeff Fenley	August 1, 1950	14
H. E. Harrell	August 5, 1950	14
H. H. Chappell	August 7, 1950	14
Tony E. Adkins	August 8, 1950	14
A. L. Harrison	August 14, 1950	14
E. C. Allen	August 15, 1950	14
Raymond Hulett	August 15, 1950	14
Robert Ridgeway	August 19, 1950	14
Elbert Davis	August 22, 1950	14
Arthur Fisher	August 25, 1950	14
Sam Wall	August 8, 1952	12
Charles T. Mann	August 8, 1952	12
Leo Gregory	August 19, 1954	10
Lathan White	August 23, 1955	9
Olen McMullen	August 25, 1955	9
Robert V. Brevell	August 22, 1956	8
William D. Matchett	August 14, 1957	7
James W. Edens	August 14, 1961	3
Ivy F. Sims, Jr.	August 16, 1961	3
George Rice	August 21, 1961	3
Tommy E. Hanson	August 21, 1961	3
Johannie F. Roberts	August 17, 1962	2
Tommy J. Davis	August 27, 1962	2
Roy Lynne Tullos	August 28, 1962	2
Lenard R. Stephens	August 6, 1963	1
Dewie Isaac Free	August 23, 1963	1

PATTERN SHOP

Employment Date	Years With Co.	
James W. May	August 15, 1944	20
James T. Modisette	August 1, 1950	14
Frank Howard Tate	August 22, 1961	3

The Editor's Corner

IT IS with a sad heart that we begin this monthly column, for we have lost a true and wonderful friend —our boss, Al. E. Cudlipp, Sr.

Mr. Cudlipp was one of those rare individuals whose personality leaves its indelible mark on whomever chanced to be associated with him. It was a pleasure to work for him and an exhilarating experience to be in his presence. He never failed to have a humorous story to pass along, and half the fun was listening to his laugh after he told the tale.

We were fortunate to know him in several aspects of his life—in the business world, the civic activities, and in his personal life with his family. We have memories of all these which will be cherished forever.

Some there are in our employee family who have remarked that they did not know him. It is a pity and a loss. However, Mr. Cudlipp's work for Lufkin Foundry did not take him often into the plant. He was our face in Washington, Birmingham, Pittsburgh, Miami, Houston, New York, Dallas or wherever Lufkin needed a representative.

He was our voice in lumber circles which was the industry upon which Lufkin Foundry cut its teeth. He was our voice in trucking circles which was the industry we courted after buying the Martin Wagon Company. It would be impossible to place a monetary value on Mr. Cudlipp's influence in these fields.

Next to his family, he loved Lufkin Foundry best. We've heard him say many times that the late W. C. Trout was a second father to him. Mr. Cudlipp gave 45 of his 64 years to this Company. If there were a regret, it was that he couldn't give more.

He loved life and the people who were part of it. He gave much of his own for his company, his town, his church and his friends.

It is a deplorable and sad fact that he was taken from us when he still had so much to give.

There are countless people who mourn his death. His absence among us will be an acute reminder of our loss. Although the great and near-great personages across our land will miss him, those of us who are just the ordinary people also will grieve, for he was a friend to all.

INDUSTRIAL ENGINEERING

Employment Date	Years With Co.	
Doyle L. Bowers	August 18, 1941	23

MATERIAL CONTROL

Employment Date	Years With Co.	
Delma Brookshire	August 21, 1963	1

MAIN OFFICE

Employment Date	Years With Co.	
Hubert Dyer	August 16, 1933	31
Laura Douglass	August 8, 1938	26
T. V. Martin	August 28, 1941	23
Nolan Wilson	August 8, 1945	19
Dick McKay	August 1, 1956	8
Cashie C. Allen	August 29, 1956	8
Joseph Varga	August 23, 1961	3
Patsy Metcalf	August 1, 1962	2
Ruben R. Hall	August 1, 1962	2

SECURITY GUARD

Employment Date	Years With Co.	
J. M. Deal, Sr.	August 17, 1950	14

MILL SUPPLIES

Employment Date	Years With Co.	
Curtis B. Mills	August 11, 1948	16
Jack L. Green	August 1, 1956	8

TRAFFIC DEPARTMENT

Employment Date	Years With Co.	
Carrel Watts	August 12, 1941	23
E. W. Chapman	August 5, 1950	14
Jim Cummings	August 11, 1955	9

TRAILER SALES & SERVICE

Employment Date	Years With Co.	
Milton David	August 7, 1954	10
Archie Edd Morris	August 1, 1955	9
Donald E. Butler	August 21, 1956	8
John D. Canavacholo	August 13, 1957	7
Garland E. Lewis	August 27, 1957	7
Edward Lee Johnson	August 27, 1957	7
Gertrude S. Gonzales	August 11, 1958	6
Edward M. Kleiber	August 18, 1958	6
Floyd Bates	August 1, 1960	4
Daniel J. Torres	August 18, 1961	3
Henry Lee Yates	August 28, 1961	3
Weldon A. Phillips	August 22, 1962	2

OILFIELD SALES & SERVICE

Employment Date	Years With Co.	
William J. Kloss	August 9, 1950	14
Jack W. Leary	August 1, 1955	9
Jack E. Fisher	August 6, 1956	8
Samuel T. Curtis	August 13, 1956	8
Joseph H. Skeeters	August 12, 1957	7
Allen D. Herndon	August 20, 1959	5
Alfredo Morales	August 6, 1960	4



Now there are diversities of gifts.—(1 Cor. 12:4).

We should always appreciate and make full use of our God-given powers and abilities. Instead of envying the talents of others we must remember that He has endowed us with many gifts; that we need only open our minds to the light of the Spirit, our hearts to the understanding of the Spirit, and our lives to the power of the Spirit.

The Foundry Roundup

Lufkin Foundry & Machine Co.

P. O. Box 849
LUFKIN, TEXAS 75902

RETURN REQUESTED

BULK RATE
U. S. POSTAGE
PAID
Permit No. 5340
HOUSTON, TEXAS



Husband: Let's go out and have some real fun tonight.

Wife: O.K. If you get home first, leave a light in the hall.

The young wife approached a post office window and said, "I wish to complain about the service."

"What's the trouble, madam?" the clerk asked.

"My husband is in Atlanta on business and the letter he sent me is post marked Miami Beach."

Joe: "Say, Bill, I think I saw your wife downtown today. She was trying to park between two trucks."

Bill: "Did she make it?"

Joe: "Yep."

Bill: "Then she wasn't my wife."

A stranger in town stopped to look over a campus. Meeting a student, he asked, "What is the name of this school?"

"Sorry, sir," said the youngster politely. "I'm just a football player here."

Gordie: "I had a swell hunch at the races the other day. It was the seventh day of the seventh month, my wife and I have been married seven years, it was the seventh race so I played horse number 7."

Sam: "And he won?"

Gordie: "No—he came in seventh."

"Does your husband talk in his sleep?"

"No, and it is terribly exasperating. He just grins."

An admirer came up to the senatorial candidate after his speech and

shook his hand warmly: "Congratulations. That was an excellent speech. I liked the straightforward way you dodged all the issues."

Smith's symptoms were alarming enough to take him to a doctor for a check-up. Having fortified himself at a tavern, he went through the examination and awaited the report in the reception room. When the doctor appeared, Smith asked eagerly, "What does the report show, Doc?"

"According to this analysis," answered the medico, "there is every indication that a small percentage of blood is getting into your alcohol system."

As many as half the pupils in the small town grammar school had been absent with colds at one time. On a day when the attendance was particularly good, the teacher decided to give a little talk on the dangers of exposure.

To clinch her talk, she concluded: "I knew a little boy just seven years old who took his new sled out in the snow, and he caught pneumonia and three days later he died."

The classroom was heavy with silence, and she was satisfied with the effectiveness of her story, when suddenly a small voice piped up from the rear:

"Where's his sled?"

The minister called at the Jones home one Sunday afternoon, and little Willie answered the bell. "Pa ain't home," he announced, "He went over to the golf club."

"The minister's brow darkened, and Willie hastened to explain: "Oh, he ain't gonna play any golf. Not on Sunday. He just went over for a few high-balls and a little stud poker."

A man can usually tell what kind of a time he is having at a party by the look on his wife's face.

A small boy in a department store was standing near the escalator watching the moving handrail.

"Something wrong?" asked a clerk.

"Nope," said the lad. "Just waiting for my chewing gum to come back."

Vacation: Two weeks on the sands; fifty weeks on the rocks.

Ole Doc McTavish was taking a well-earned vacation. His son, just graduated from medical school, took over his father's practice. "Dad, I made some marvelous cures while you were away," the son boasted on his father's return. "I even cured Mrs. MacGregor's stomach trouble after you had treated her for four years."

"What!" exclaimed the old doctor. "Old Mrs. MacGregor? I'll have you know, son, it was her stomach that put you through college."

Irate woman driver to cop: "How could I have a driver's license? You took it away from me last summer!"

In a furious battle, a battered fighter was knocked down. The referee began counting. When he reached "two," the fighter's manager yelled from his corner: "Don't get up until eight."

The battered fighter raised up on one elbow and asked: "What time is it now?"

The Foundry Roundup

Volume 22

Number 8

Published Monthly for
Employees and Their Families

by
LUFKIN FOUNDRY & MACHINE CO.
VIRGINIA R. ALLEN, Editor



Member
of the
International Council
of Industrial Editors