

H. O. CO. ACREAGE 1279 SUB NO. Gavino Aranjó SURVEY Tyler COUNTY, ABSTRACT NO. 3

Acres found 1279 Patentee \_\_\_\_\_ Estimated by H. H. Bilbo Date October 4, 1910  
 Timber Rights Expire \_\_\_\_\_ Mineral Rights Expire \_\_\_\_\_ H. O. Co. Represented by \_\_\_\_\_  
 Encroachments, Conflict, Trespass, Houses, Fences, Fields Encroachment, Houses, Fences, Fields  
 Has Land Been Cut Over? Yes When 22 yrs. By Fleming & Yel. P. Lbr. Co. Class of Timber Cut Long Leaf Pine  
 Topography Part Rolling and part Flat Soil \_\_\_\_\_  
 Adaptable for Grazing and Agriculture Indications of \_\_\_\_\_

**PINE REPRODUCTION**

Area No.	1	2		
Acres	635	623		
L. L. Seedlings				
S. L. Seedlings				
L. L. 7"	31M	13M		
L. L. 8" to 11"	153M	80M		
S. L. 7"				
S. L. 8" to 11"				
Total Feet	184M	93M		

**MERCHANTABLE PINE (M. FEET) HERRING LOG SCALE—OUTSIDE BARK MEASUREMENT**

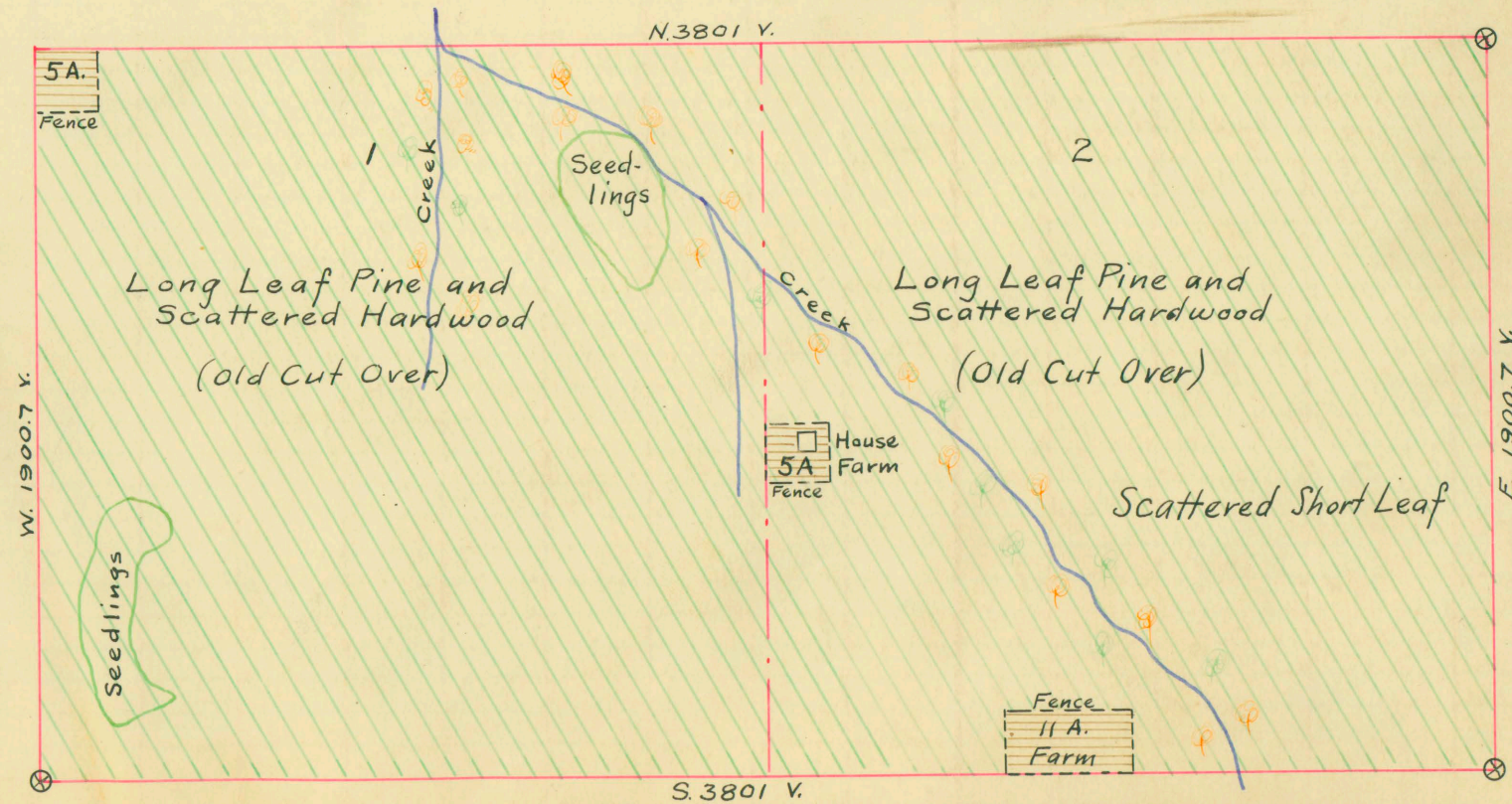
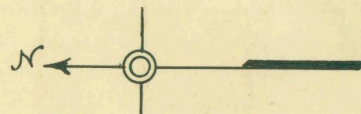
AREA NO.	ACRES	LONG LEAF		SHORT LEAF		LOGS TO TREE	LOGS TO M.	TOTAL FEET
		12" to 16"	17" & Up	12" to 16"	17" & Up			
1	635	1934	4385			3	16	6,319,000
2	623	1647	3920					5,567,000
2	623			25	22	3	18	47,000
Total Feet		3581	8305	25	22			11,933,000

Growth Vigorous Quality Good  
 Isolated or Grouped Both Injury None  
 Jeopardized by \_\_\_\_\_ Preferred Method of Logging Tram

**HARDWOOD (M. FEET) SCRIBNER-DOYLE LOG SCALE—INSIDE BARK MEASUREMENT**

Method of Logging	AREA NO.	ACRES	TUPELO GUM	RED GUM		CYPRESS		WHITE OAK		RED OAK		HICK-ORY	ASH	BEECH	MAG-NOLIA	TOTAL		
				Ties	Feet	Ties	Feet	Ties	Feet	Ties	Feet					Feet	Ties	
Nearest Stream	1	635		13	3												3,000	13
	2	623		340	60					480	2						62,000	820
Reproduction <u>None</u>																	65,000	833

Revised Courses and Distances Field notes call for north and south, distances east and west.





See  
v. 11 p. 11

ABSTRACT NO. 3

# RECORD OF TIMBER CUTTING

DATE	PINE					HARDWOOD													
	LONG LEAF		SHORT LEAF		TIES	PILING	TUPELO GUM	RED GUM		CYPRESS		WHITE OAK		RED OAK		HICK-ORY	ASH	BEECH	MAG-NOLIA
	12" to 16"	17" Up	12" to 16"	17" Up				Ties	Feet	Ties	Feet	Ties	Feet	Ties	Feet				
1919 July		257492	Camp Hampton.				W. H. Cochran & S. B. #1087.	10/20 report all cut, except the											
Aug.		510206					John Patten claim 160	acres in Park Co, 10,000 feet.											
Sept.		581985					of sand & of 12 inches	& up diameter.											
Oct.		309226																	
Nov.		350622																	
Dec.		67849																	
1920 Jan.		398704																	
Feb.		329072																	
March		543891																	
April		641148																	
May		496157																	
June		380879																	
July		734022																	
Aug.		448713																	
Sept.		138056																	

Filed under heading Camp Hampton.