

H. O. CO. ACREAGE 4428 SUB NO. 1 Norman Hurd SURVEY Tyler COUNTY, ABSTRACT NO. 22

Acres found 4428 Patentee \_\_\_\_\_ Estimated by Otey, Shaw, Dumphy & McDonald Date October 22, 1910  
 Timber Rights Expire \_\_\_\_\_ Mineral Rights Expire \_\_\_\_\_ H. O. Co. Represented by \_\_\_\_\_  
 Encroachments, Conflict, Trespass, Houses, Fences, Fields None  
 Has Land Been Cut Over? No When \_\_\_\_\_ By \_\_\_\_\_ Class of Timber Cut \_\_\_\_\_  
 Topography Rolling Soil Sand and Alluvial  
 Adaptable for Agriculture if protected from river overflow Indications of \_\_\_\_\_

| PINE REPRODUCTION |      |      |     |     |
|-------------------|------|------|-----|-----|
| Area No.          | 1-B  | 2-B  | 3-B | 4   |
| Acres             | 620  | 560  | 630 | 640 |
| L. L. Seedlings   |      |      |     |     |
| S. L. Seedlings   |      |      |     |     |
| L. L. 7"          |      |      |     |     |
| L. L. 8" to 11"   |      |      |     |     |
| S. L. 7"          | 11M  | 11M  | 10M | 4M  |
| S. L. 8" to 11"   | 118M | 90M  | 41M | 20M |
| Total Feet        | 129M | 101M | 51M | 24M |

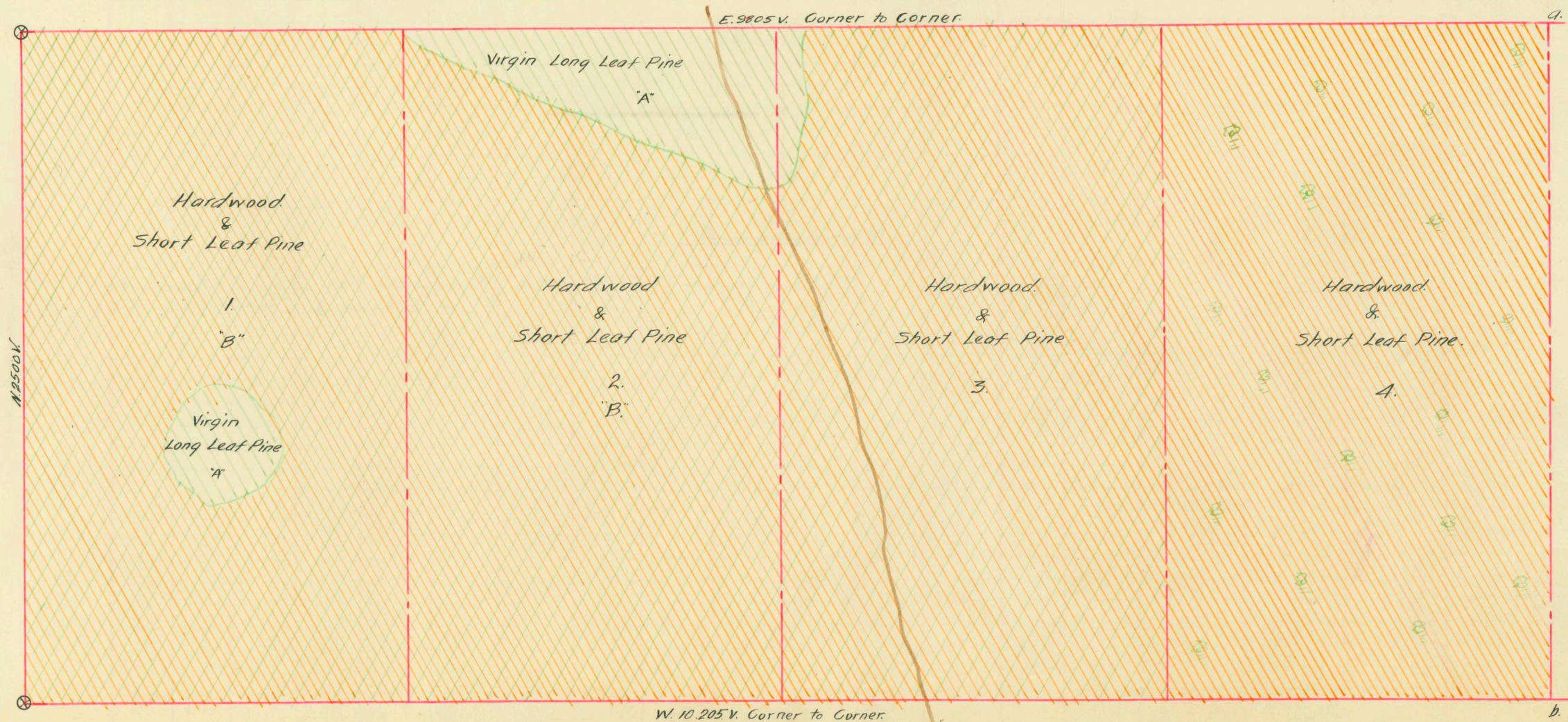
| MERCHANTABLE PINE (M. FEET) HERRING LOG SCALE—OUTSIDE BARK MEASUREMENT |       |            |          |            |          |              |            |            |
|--|-------|------------|----------|------------|----------|--------------|------------|------------|
| AREA NO.   | ACRES | LONG LEAF  |          | SHORT LEAF |          | LOGS TO TREE | LOGS TO M. | TOTAL FEET |
|  |       | 12" To 16" | 17" & UP | 12" To 16" | 17" & UP |              |            |            |
| 1-A  | 20    | 48         | 238      |            |          | 3-4          | 8-10       | 286,000    |
| 1-B  | 620   |            |          | 526        | 1270     | 3-4          | 8-10       | 1,796,000  |
| 2-A  | 80    | 213        | 1458     |            |          | 3-4          | 8-10       | 1,671,000  |
| 2-B  | 560   |            |          | 329        | 664      | 3-4          | 8-10       | 993,000    |
| 3  | 640   | 14         | 152      | 218        | 724      | 3-4          | 8-10       | 1,108,000  |
| 4  | 640   |            |          | 114        | 167      | 3-4          | 8-10       | 281,000    |
| Total Feet   |       | 275        | 1848     | 1187       | 2825     |              |            | 6,135,000  |

Growth Fair Quality Medium  
 Isolated or Grouped Scattered Injury None  
 Jeopardized by \_\_\_\_\_ Preferred Method of Logging Tram

| Method of Logging | AREA NO. | ACRES | TUPELO GUM | HARDWOOD (M. FEET) SCRIBNER-DOYLE LOG SCALE—INSIDE BARK MEASUREMENT |      |         |      |           |      |         |      |          |     | TOTAL |           |           |       |
|-------------------|----------|-------|------------|---|------|---------|------|-----------|------|---------|------|----------|-----|-------|-----------|-----------|-------|
|                   |          |       |            | RED GUM   |      | CYPRESS |      | WHITE OAK |      | RED OAK |      | HICK-ORY | ASH | BEECH | MAG-NOLIA | Feet      | Ties  |
|                   |          |       |            | Ties  | Feet | Ties    | Feet | Ties      | Feet | Ties    | Feet |          |     |       |           |           |       |
| Nearest Stream    | 1        | 620   |            | 768   | 76   | 90      | 43   | 320       | 149  | 816     | 48   |          |     | 61    | 31        | 408,000   | 1,994 |
|                   | 2        | 560   | 18         | 352   | 240  | 40      | 80   | 332       | 345  | 124     | 20   |          |     | 47    | 5         | 755,000   | 848   |
| Reproduction      | 3        | 630   | 55         | 1412  | 1072 | 120     | 202  | 320       | 330  | 672     | 440  | 15       | 28  |       | 5         | 2,147,000 | 2,524 |
|                   | 4        | 640   | 10         | 832   | 1750 | 100     | 316  | 830       | 628  | 640     | 568  | 26       |     | 24    | 5         | 3,327,000 | 2,402 |
|                   |          |       |            |   |      |         |      |           |      |         |      |          |     |       |           | 6,637,000 | 7,768 |

Revised Courses and Distances

Quality good



ABSTRACT NO. *22*

RECORD OF TIMBER CUTTING

| DATE | PINE       |        |            |        |      |        | HARDWOOD   |         |      |         |      |           |      |         |      |          |     |       |           |
|------|------------|--------|------------|--------|------|--------|------------|---------|------|---------|------|-----------|------|---------|------|----------|-----|-------|-----------|
|      | LONG LEAF  |        | SHORT LEAF |        | TIES | PILING | TUPELO GUM | RED GUM |      | CYPRESS |      | WHITE OAK |      | RED OAK |      | HICK-ORY | ASH | BEECH | MAG-NOLIA |
|      | 12" to 16" | 17" Up | 12" to 16" | 17" Up |      |        |            | Ties    | Feet | Ties    | Feet | Ties      | Feet | Ties    | Feet |          |     |       |           |
|      |            |        |            |        |      |        |            |         |      |         |      |           |      |         |      |          |     |       |           |

Hardwood

1918 June 250599 ft. Cut by Friedlaender  
- Glycer Stave Co.