

H. O. CO. ACREAGE 640 SUB NO. E.T.Ry.Co. Sec. 19 SURVEY Tyler COUNTY, ABSTRACT NO. 236

Acreage found 632 Patentee _____ Estimated by W. S. Byrd Date November 3, 1910
 Timber Rights Expire _____ Mineral Rights Expire _____ H. O. Co. Represented by _____
 Encroachments, Conflict, Trespass, Houses, Fences, Fields Houses, Fences and Fields
 Has Land Been Cut Over? Yes When 20 Yrs. By _____ Class of Timber Cut Long Leaf Pine
 Topography Flat Soil Clay
 Adaptable for Grazing Indications of _____

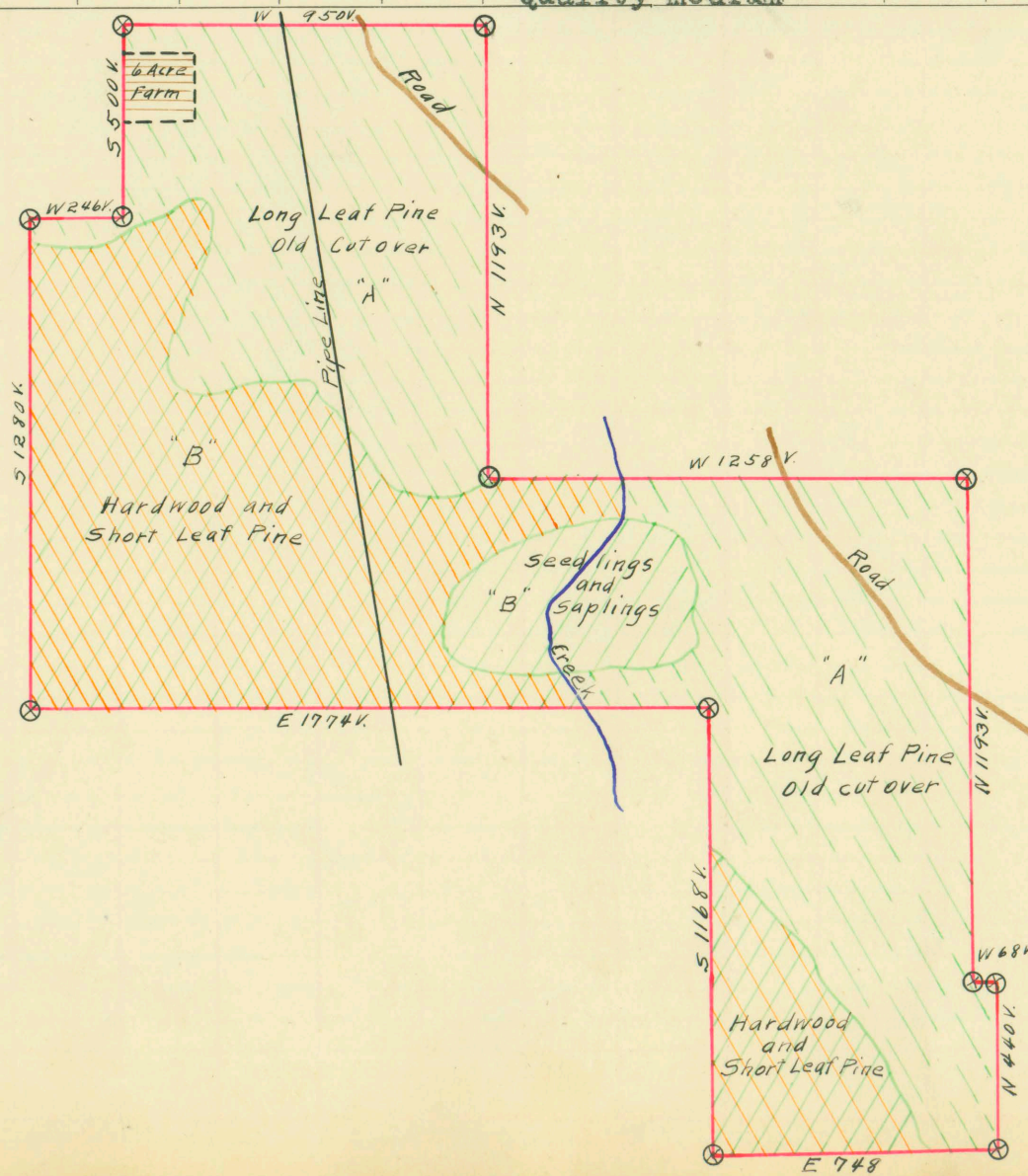
PINE REPRODUCTION		A	B		
Area No.					
Acres		<u>306</u>	<u>320</u>		
L. L. Seedlings					
S. L. Seedlings					
L. L. 7"		<u>15M</u>			
L. L. 8" to 11"		<u>72M</u>			
S. L. 7"			<u>29M</u>		
S. L. 8" to 11"			<u>142M</u>		
Total Feet		<u>87M</u>	<u>171M</u>		

AREA NO.	ACRES	LONG LEAF		SHORT LEAF		LOGS TO TREE	LOGS TO M.	TOTAL FEET
		12" to 16"	17" & Up	12" to 16"	17" & Up			
<u>A</u>	<u>306</u>	<u>241</u>	<u>797</u>					<u>1,038,000</u>
<u>B</u>	<u>320</u>			<u>319</u>	<u>1643</u>			<u>1,962,000</u>
Total Feet								<u>3,000,000</u>

Growth Vigorous Quality S.L. medium length and very smooth
 Isolated or Grouped Grouped Injury None
 Jeopardized by _____ Preferred Method of Logging Tram

Method of Logging	AREA NO.	ACRES	TUPELO GUM	RED GUM		CYPRESS		WHITE OAK		RED OAK		HICK-ORY	ASH	BEECH	MAG-NOLIA	TOTAL	
				Ties	Feet	Ties	Feet	Ties	Feet	Ties	Feet					Feet	Ties
Nearest Stream	<u>B</u>	<u>320</u>		<u>1920</u>	<u>20</u>			<u>640</u>	<u>65</u>	<u>2560</u>	<u>34</u>			<u>4</u>	<u>12</u>	<u>135,000</u>	<u>5,120</u>
Reproduction																	

Revised Courses and Distances



In receipt

ABSTRACT NO. 236

RECORD OF TIMBER CUTTING

DATE	PINE						HARDWOOD													
	LONG LEAF		SHORT LEAF		TIES	PILING	TUPELO GUM	RED GUM		CYPRESS		WHITE OAK		RED OAK		HICKORY	ASH	BEECH	MAGNOLIA	
	12" TO 16"	17" UP	12" TO 16"	17" UP				Ties	Feet	Ties	Feet	Ties	Feet	Ties	Feet					
1915 May		176	<i>Gulf Pipe Line Co.</i>																	
1920 Feb.		485																		
1921 March		363																		
1921 March		1490																		
1921 April		411																		

Fixed in blue binding sample